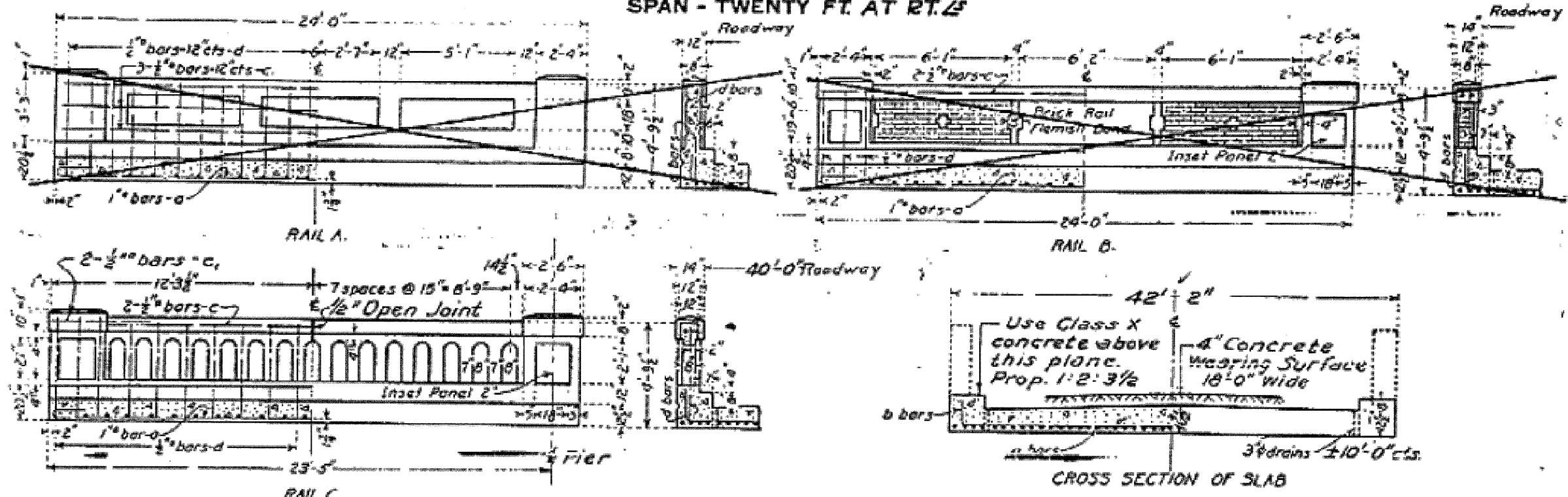


STATE OF ILLINOIS
DEPARTMENT OF PUBLIC WORKS & BUILDINGS
DIVISION OF HIGHWAYS

ROUTE NO.	COUNTY	SEC.	TOTAL SHEETS	SHEET NO.
89	WOODFORD	126	20	19-B

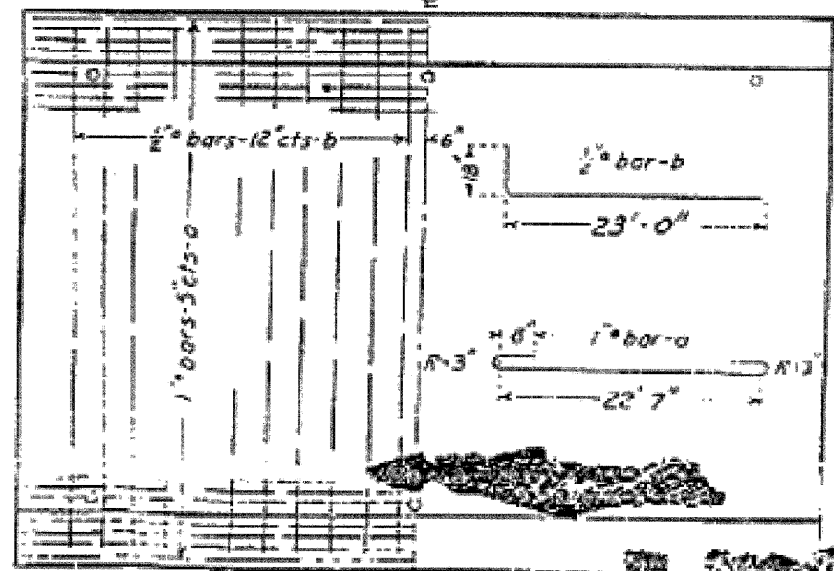
Sheet No 2
of 5 sheets

REINFORCED CONCRETE SLAB
SPAN - TWENTY FT. AT RT. 25



FOR INFORMATION ONLY

BILL OF MATERIAL FOR TWO SPANS - TWO SPANS REQD.

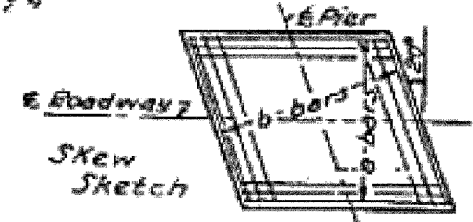


	16 FT. ROADWAY		18 FT. ROADWAY		20 FT. ROADWAY		24 FT. ROADWAY		40 FT. ROADWAY				
	Bars	No.	Size	Length	Bars	No.	Size	Length	Bars	No.	Size	Length	
RAIL A	a	43	1"	26'-0"	a	48	1"	26'-0"	a	52	1"	26'-0"	
	b	22	1/2"	20'-0"	b	22	1/2"	20'-0"	b	22	1/2"	20'-0"	
	c	4	1/2"	23'-6"	c	4	1/2"	23'-6"	c	4	1/2"	23'-6"	
	d	48	1/2"	4'-6"	d	48	1/2"	4'-6"	d	48	1/2"	4'-6"	
	Steel-Lbs.	4480		Steel-Lbs.	4960		Steel-Lbs.	5350	Steel-Lbs.	6350		Steel-Lbs.	7700
	Concrete-Cu Yds.	2.8		Concrete-Cu Yds.	3.2		Concrete-Cu Yds.	3.8	Concrete-Cu Yds.	4.8		Concrete-Cu Yds.	6.2
RAIL B	a	43	1"	26'-0"	a	48	1"	26'-0"	a	52	1"	26'-0"	
	b	22	1/2"	20'-0"	b	22	1/2"	20'-0"	b	22	1/2"	20'-0"	
	c	4	1/2"	23'-6"	c	4	1/2"	23'-6"	c	4	1/2"	23'-6"	
	d	48	1/2"	4'-6"	d	48	1/2"	4'-6"	d	48	1/2"	4'-6"	
	Steel-Lbs.	4480		Steel-Lbs.	4960		Steel-Lbs.	5350	Steel-Lbs.	6350		Steel-Lbs.	7700
	Concrete-Cu Yds.	2.8		Concrete-Cu Yds.	3.2		Concrete-Cu Yds.	3.8	Concrete-Cu Yds.	4.8		Concrete-Cu Yds.	6.2
RAIL C	a	200	1"	29'-6"	a	48	1"	26'-0"	a	52	1"	26'-0"	
	b	80	1/2"	20'-0"	b	22	1/2"	20'-0"	b	22	1/2"	20'-0"	
	c	10	1/2"	23'-6"	c	4	1/2"	23'-6"	c	4	1/2"	23'-6"	
	d	40	1/2"	4'-6"	d	48	1/2"	4'-6"	d	48	1/2"	4'-6"	
	Steel-Lbs.	2000		Steel-Lbs.	4960		Steel-Lbs.	5350	Steel-Lbs.	6350		Steel-Lbs.	7700
	Concrete-Cu Yds.	1.8		Concrete-Cu Yds.	3.2		Concrete-Cu Yds.	3.8	Concrete-Cu Yds.	4.8		Concrete-Cu Yds.	6.2

used the width except as noted w/ RAIL C, 40 FT. ROADWAY.
Proportions - 1 2/3

DESIGNED	Checked
DRAWN	Checked
CHECKED	Approved
APPROVED	DATE

10/21/27
J. F. Burch
K. H. ...
APPROVED



SBI - RTE. 89 - SEC. 126
WOODFORD COUNTY
STA. 521 + 90