

No Existing Structure - Relocation
 B.M. # 86 N & W in 24" Willow 110' Lt.
 Sta. 521+20 Elev. 442.56

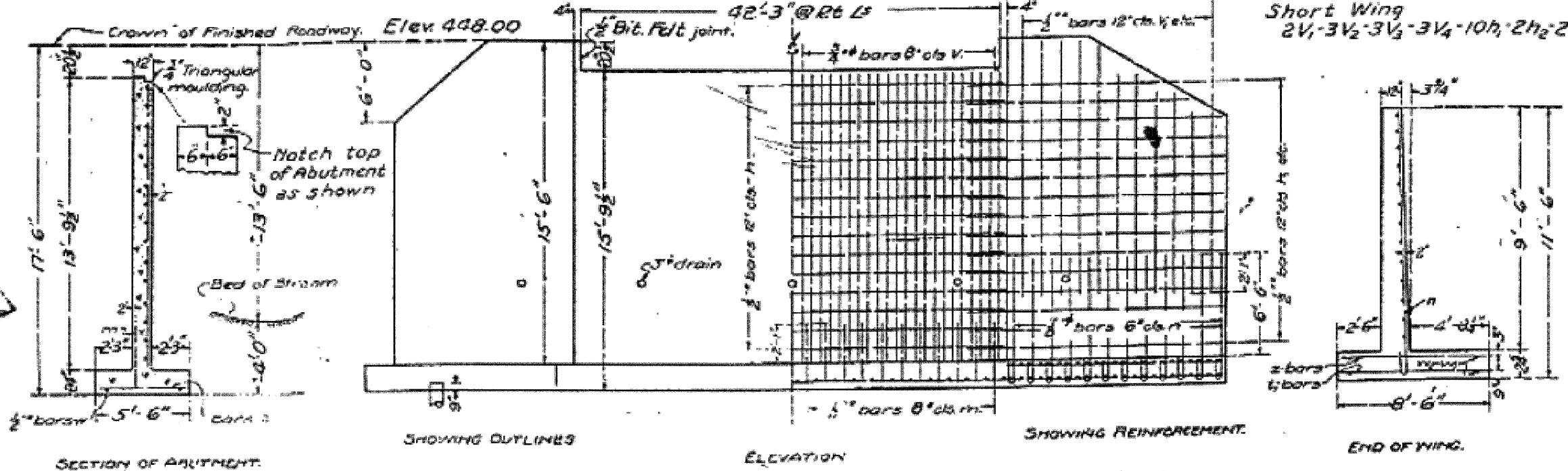
STATE OF ILLINOIS
 DEPARTMENT OF PUBLIC WORKS & BUILDINGS
 DIVISION OF HIGHWAYS

BOND ISSUE ROUTE NO.	COUNTY	SEC.	TOTAL SHEETS	SHEET NO.
89	WOODFORD	126	20	19-B

Sheet No. 4
 of 5 sheets.

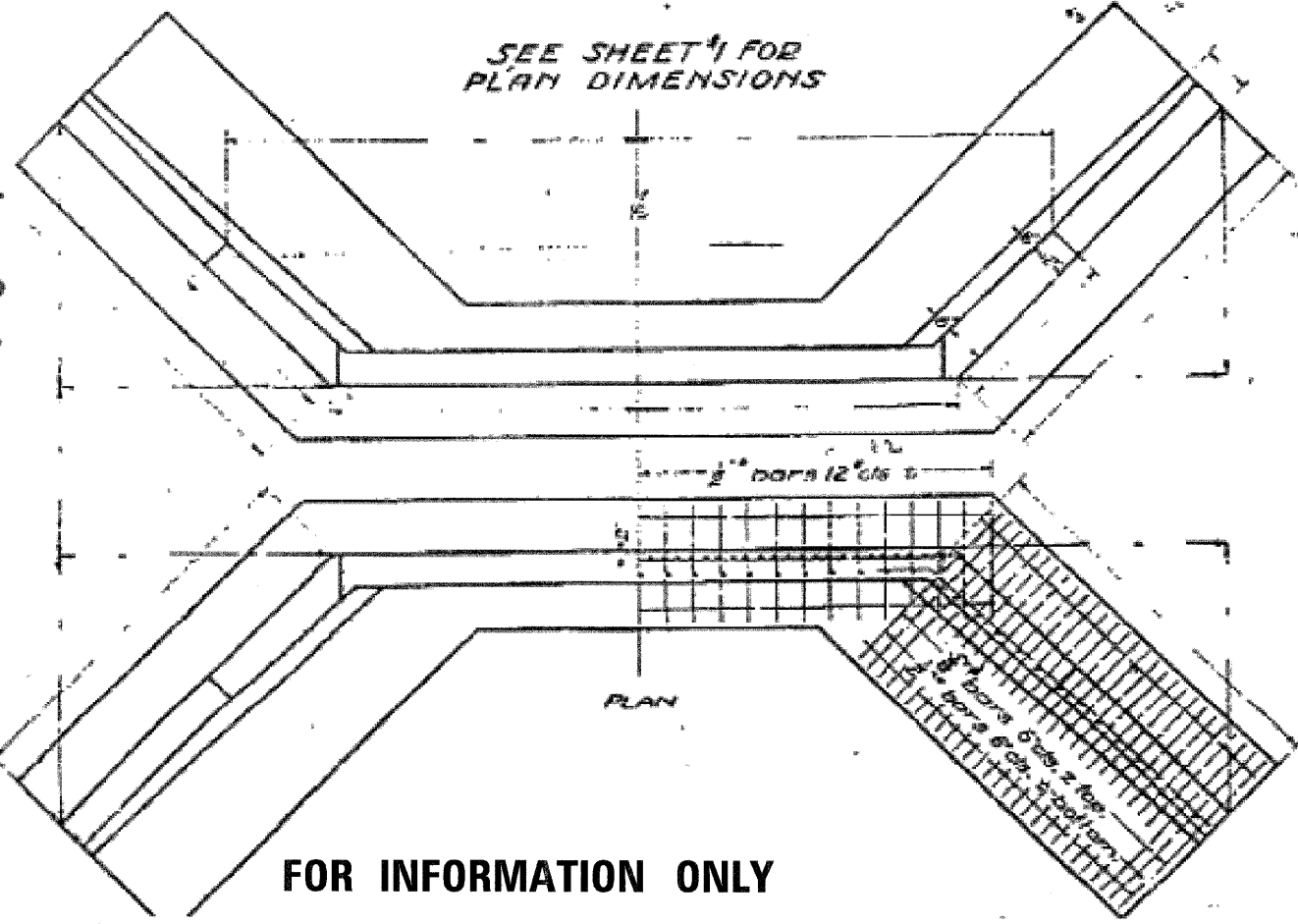
R.C. ABUTMENTS FOR SLAB BRIDGE
 HEIGHT OVER ALL 17 FEET 6 IN S

Long Wing
 5V₁-3V₂-4V₃-5V₄-10h₁-2h₂-2l
 Short Wing
 2V₁-3V₂-3V₃-3V₄-10h₁-2h₂-2l



Class A concrete shall be used throughout.
 Proportions: 1:2 1/2:4.
 All reinforcing steel shall be securely wired in place before concrete is poured.

- 10 Ton untr. pile 8" tip 10" butt
- 82 Req'd. Est. Leng. Lin. Ft. 1230
- 12 Ton untr. pile 10" tip 12" butt
- 20 Req'd. Est. Leng. Lin. Ft. 400



BILL OF MATERIAL.

Bars	No	Size	Length
V	138	3/4"	13'-6"
V ₁	14	1/2"	10'-0"
V ₂	12	3/4"	8'-6"
V ₃	14	3/4"	7'-0"
V ₄	16	1/2"	5'-6"
h	56	3/4"	23'-6"
h ₁	20	1/2"	13'-0"
h ₂	4	1/2"	10'-0"
h ₃	4	1/2"	7'-0"
h	112	3/4"	10'-0"
h ₁	20	1/2"	18'-6"
h	98	3/4"	5'-3"
l	118	3/4"	8'-3"
z	116	3/4"	8'-3"
w	8	1/2"	25'-0"
m	8	3/4"	12'-6"
m	138	3/4"	5'-0"
m ₂	8	1/2"	17'-0"
Reinforcing Steel Lbs./D230			
Concrete - Cu. Yds. 152.3			
h ₅	4	1/2"	14'-0"
h ₆	4	1/2"	10'-0"

COMPUTED	- H.P. Duffel
CHECKED	- R.E. Erickson
DRAWN	- J.R. Zuckman
DESIGNED	- H.P.D.
APPROVED	- J.R. Zuckman
SPECIAL	CHECKED - G.J. Zuckman

DATE: Oct 21, 27
 R. F. Bunch
 J. R. Zuckman
 DIVISION OF HIGHWAYS

FOR INFORMATION ONLY

SBI - RTE. 89 - SEC. 126
 WOODFORD COUNTY
 STA. 521+90