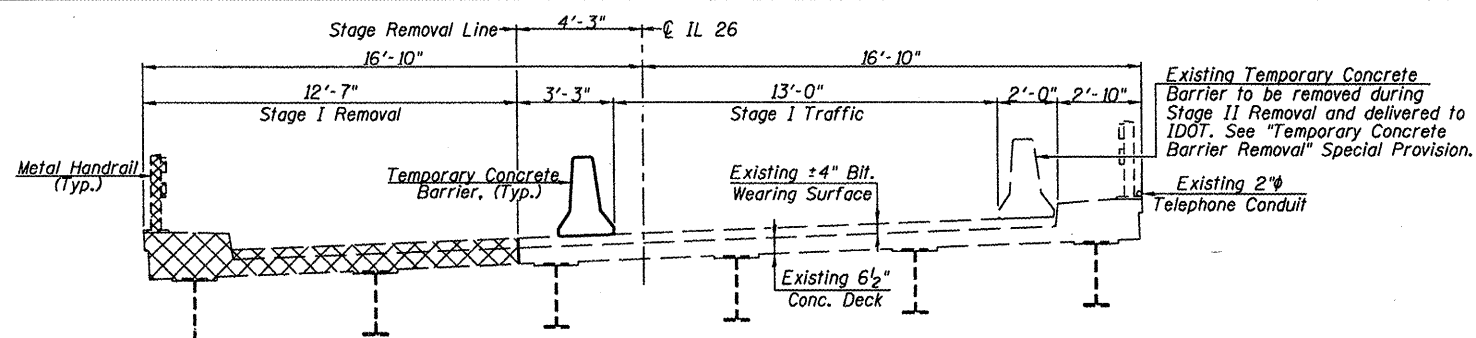
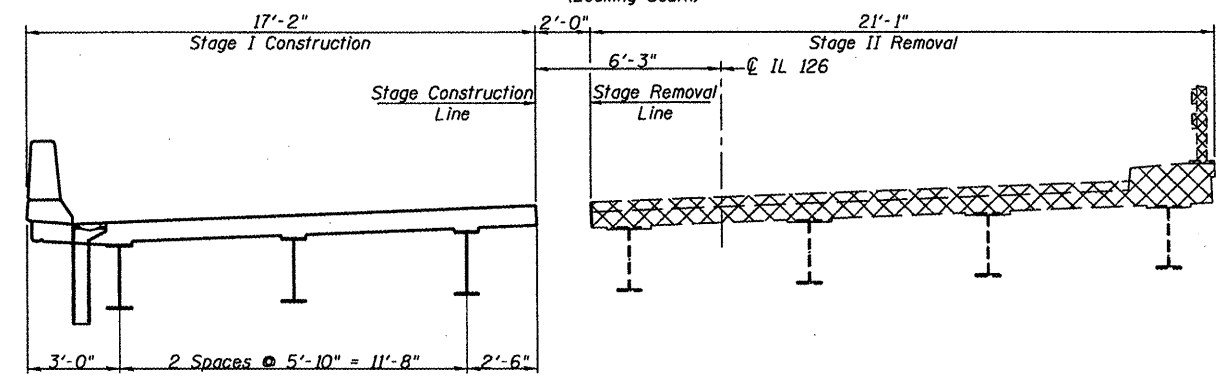


ROUTE NO.	SECTION	COUNTY	TOTAL SHEETS	SHEET NO.	SHEET NO. 3 31 SHEETS
F.A.S. 2370 (IL. 26)	1-BR	PUTNAM	65	20	
FED. ROAD DIST. NO. 7	ILLINOIS	FED. AID PROJECT-			

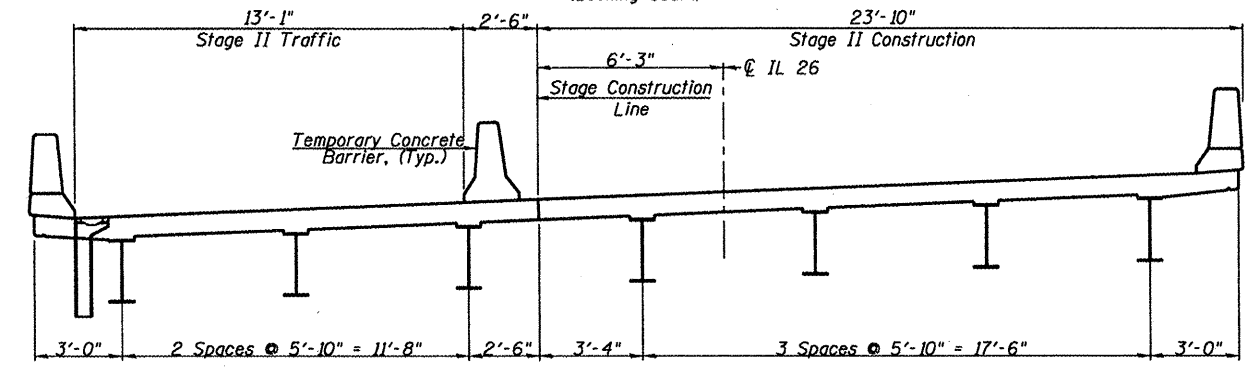
Contract # 68577



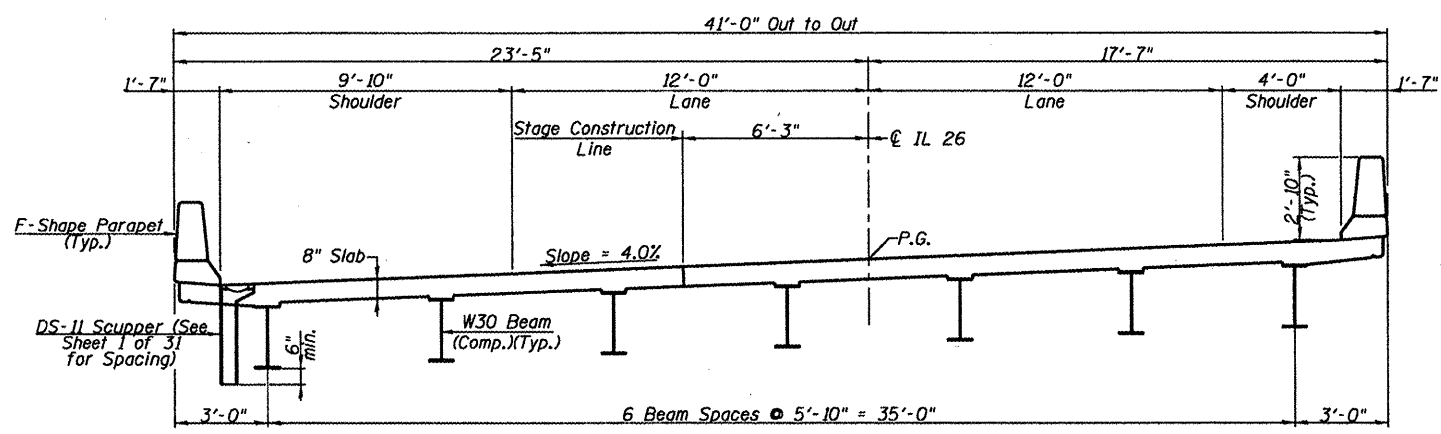
**** STAGE I REMOVAL & STAGE I TRAFFIC**
(Looking South)



**** STAGE I CONSTRUCTION & STAGE II REMOVAL**
(Looking South)



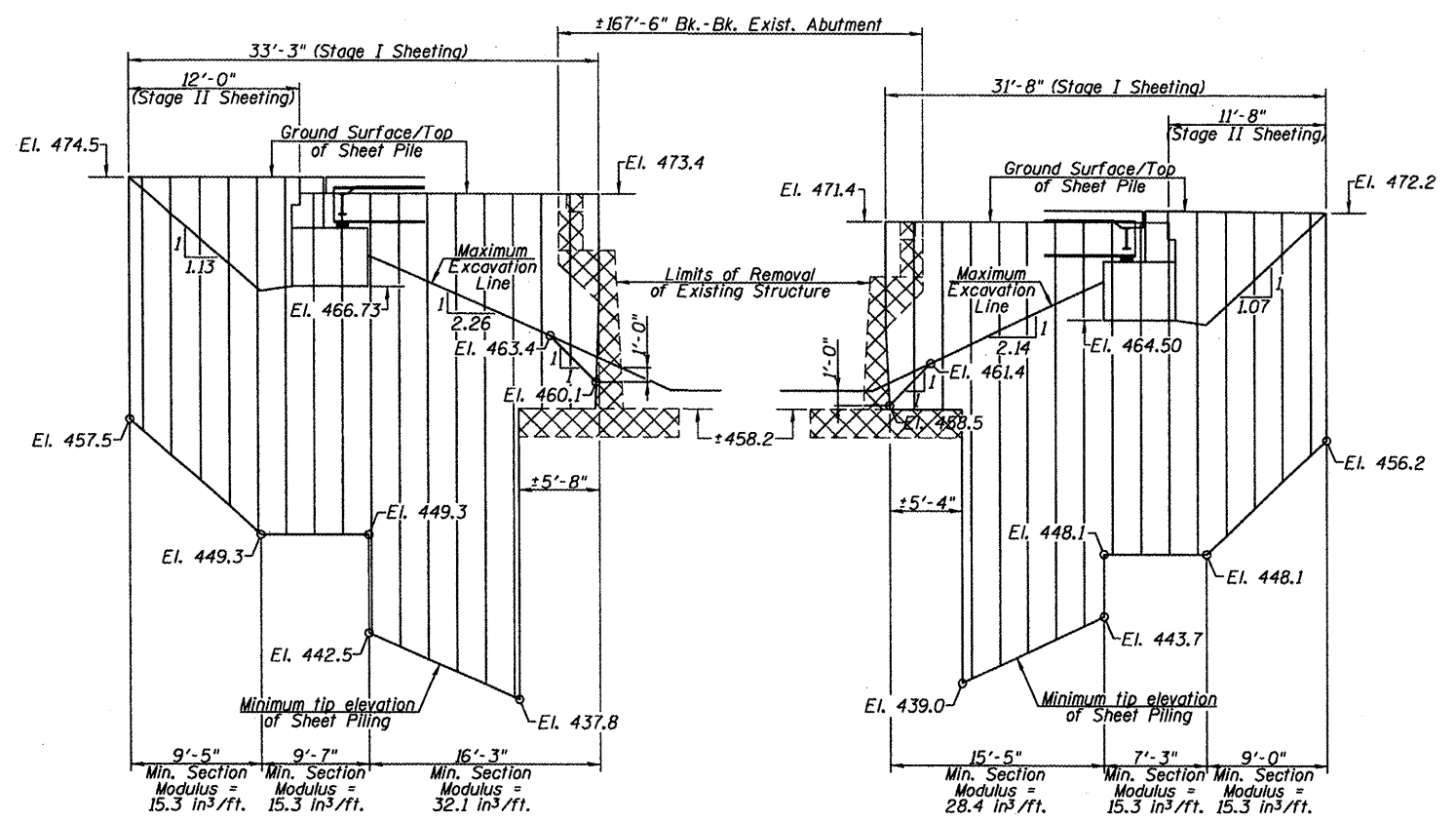
**** STAGE II CONSTRUCTION & STAGE II TRAFFIC**
(Looking South)



**** PROPOSED CROSS SECTION**
(Looking South)

Note: For quantity of temporary concrete barrier see Roadway Plans.
For details of temporary concrete barrier see sheet 5 of 31.
Cost of removing existing metal handrails and bituminous wearing surface is included in the cost of Removal of Existing Structure.
Location of Stage Removal Line and Stage Construction Line does not apply to substructure.
See Sheet 4 of 31 for location of substructure removal lines.

** All dimensions are radial from the ϕ of IL 26.



TEMPORARY SHEET PILING DETAIL
(Looking East)

If the Contractor chooses to alter the temporary cantilevered sheet piling design requirements shown on the plans, a design submittal including plan details and calculations will be required for review and acceptance by the Engineer.
The Contractor shall connect the first sheet to the existing abutment wall to ensure stability of sheets driven to the top of the existing footing. This connection shall be reviewed and accepted by the Engineer and included in the cost for Temporary Sheet Piling.

Indicates Limits of Removal of Existing Structure.

STAGE CONSTRUCTION DETAIL
ILLINOIS ROUTE 26 OVER
COFFEE CREEK
F.A.S. ROUTE 2370
SECTION 1-BR
PUTNAM COUNTY
STA. 96+59.00
STRUCTURE NO. 078-0046