

INSIDE FACE OF EAST PARAPET

Location	Station	Offset	Theoretical Grade Elevations
End of N. Approach Pavmt.	95+14.04	-21.83 ft.	473.23
A	95+24.17	-21.83 ft.	474.11
B	95+34.30	-21.83 ft.	474.00
End of N. Approach Pavmt. ● Bridge Abutment	95+44.55	-21.83 ft.	473.89

EAST EDGE OF PAVEMENT

Location	Station	Offset	Theoretical Grade Elevations
End of N. Approach Pavmt.	95+19.51	-12.00 ft.	474.56
A	95+29.58	-12.00 ft.	474.45
B	95+39.65	-12.00 ft.	474.33
End of N. Approach Pavmt. ● Bridge Abutment	95+49.79	-12.00 ft.	474.22

STAGE CONSTRUCTION LINE

Location	Station	Offset	Theoretical Grade Elevations
End of N. Approach Pavmt.	95+22.67	-6.25 ft.	474.75
A	95+32.71	-6.25 ft.	474.64
B	95+42.74	-6.25 ft.	474.53
End of N. Approach Pavmt. ● Bridge Abutment	95+52.82	-6.25 ft.	474.42

RDWY. & PROFILE GRADE

Location	Station	Offset	Theoretical Grade Elevations
End of N. Approach Pavmt.	95+26.08	0.00	474.97
A	95+36.08	0.00	474.85
B	95+46.08	0.00	474.74
End of N. Approach Pavmt. ● Bridge Abutment	95+56.08	0.00	474.63

WEST EDGE OF PAVEMENT

Location	Station	Offset	Theoretical Grade Elevations
End of N. Approach Pavmt.	95+32.55	12.00 ft.	475.37
A	95+42.48	12.00 ft.	475.26
B	95+52.41	12.00 ft.	475.15
End of N. Approach Pavmt. ● Bridge Abutment	95+62.28	12.00 ft.	475.04

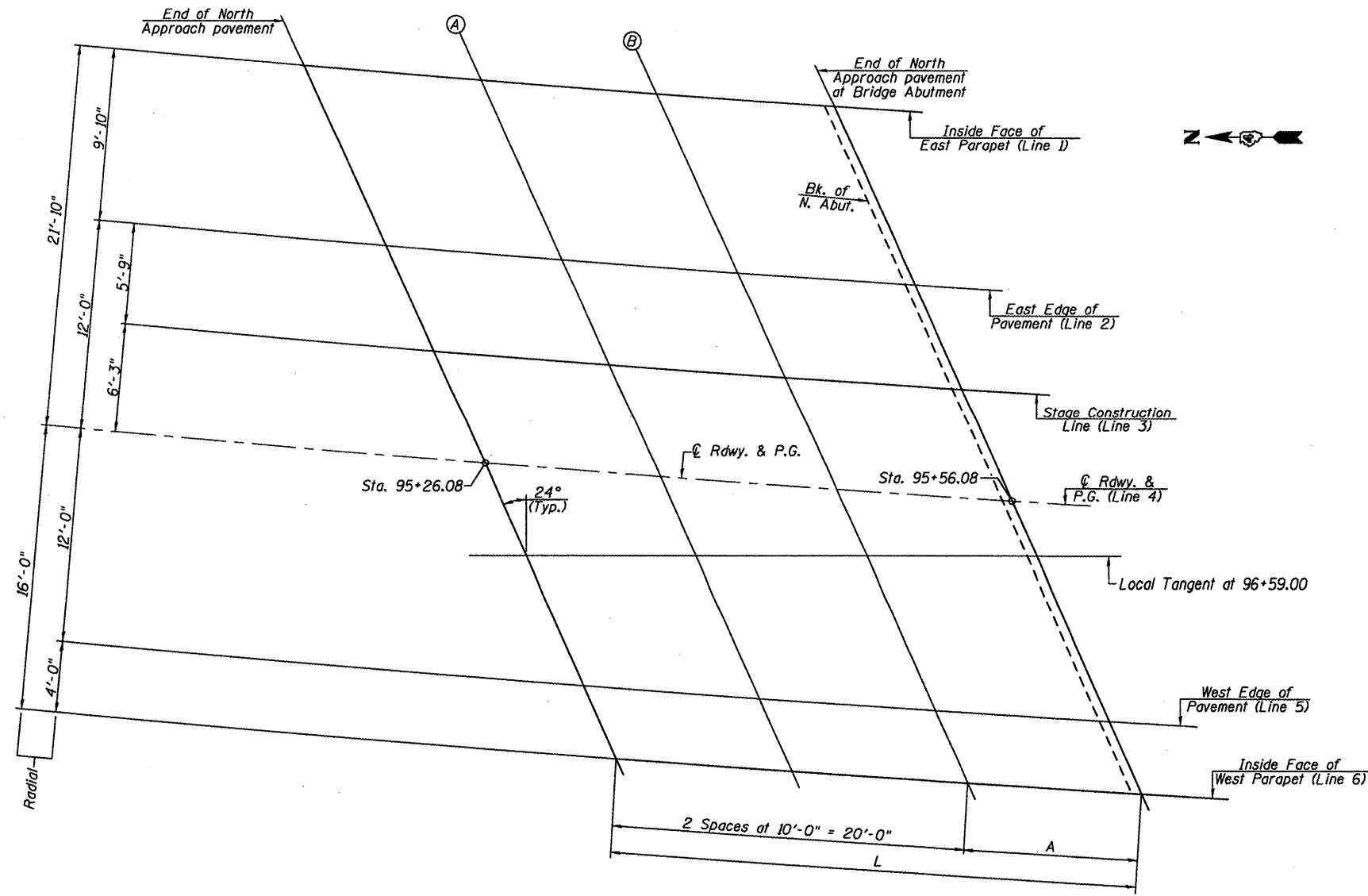
INSIDE FACE OF WEST PARAPET

Location	Station	Offset	Theoretical Grade Elevations
End of N. Approach Pavmt.	95+34.69	16.00 ft.	475.51
A	95+44.60	16.00 ft.	475.40
B	95+54.50	16.00 ft.	475.29
End of N. Approach Pavmt. ● Bridge Abutment	95+64.32	16.00 ft.	475.18

SPACING FOR TOP OF APPROACH ELEVATIONS

LINE	RADIUS	L	A
1	1663.59	30'-1 ³ / ₈ "	10'-1 ³ / ₈ "
2	1673.42	30'-0 ³ / ₄ "	10'-0 ³ / ₄ "
3	1679.17	30'-0 ³ / ₈ "	10'-0 ³ / ₈ "
4	1685.42	30'-0"	10'-0"
5	1697.42	29'-11 ¹ / ₄ "	9'-11 ¹ / ₄ "
6	1701.42	29'-11"	9'-11"

**TOP OF NORTH APPROACH
SLAB ELEVATIONS
ILLINOIS ROUTE 26 OVER
COFFEE CREEK
F.A.S. ROUTE 2370
SECTION I-BR
PUTNAM COUNTY
STA. 96+59.00
STRUCTURE NO. 078-0046**



LAYOUT PLAN - NORTH APPROACH ELEVATIONS

Note: Horizontal Dimensions given are along each line.