

INSIDE FACE OF EAST PARAPET

Location	Station	Offset	Theoretical Grade Elevations
End of S. Approach Pavmt. ● Bridge Abutment	97+50.86	-21.83 ft.	471.60
A	97+60.99	-21.83 ft.	471.48
B	97+71.12	-21.83 ft.	471.37
End of S. Approach Pavmt.	97+81.31	-21.83 ft.	471.26

EAST EDGE OF PAVEMENT

Location	Station	Offset	Theoretical Grade Elevations
End of S. Approach Pavmt. ● Bridge Abutment	97+54.64	-12.00 ft.	471.95
A	97+64.71	-12.00 ft.	471.84
B	97+74.78	-12.00 ft.	471.72
End of S. Approach Pavmt.	97+84.89	-12.00 ft.	471.61

STAGE CONSTRUCTION LINE

Location	Station	Offset	Theoretical Grade Elevations
End of S. Approach Pavmt. ● Bridge Abutment	97+56.83	-6.25 ft.	472.15
A	97+66.87	-6.25 ft.	472.04
B	97+76.90	-6.25 ft.	471.93
End of S. Approach Pavmt.	97+86.96	-6.25 ft.	471.82

RDWY. & PROFILE GRADE

Location	Station	Offset	Theoretical Grade Elevations
End of S. Approach Pavmt. ● Bridge Abutment	97+59.19	0.00	472.38
A	97+69.19	0.00	472.27
B	97+79.19	0.00	472.16
End of S. Approach Pavmt.	97+89.19	0.00	472.04

WEST EDGE OF PAVEMENT

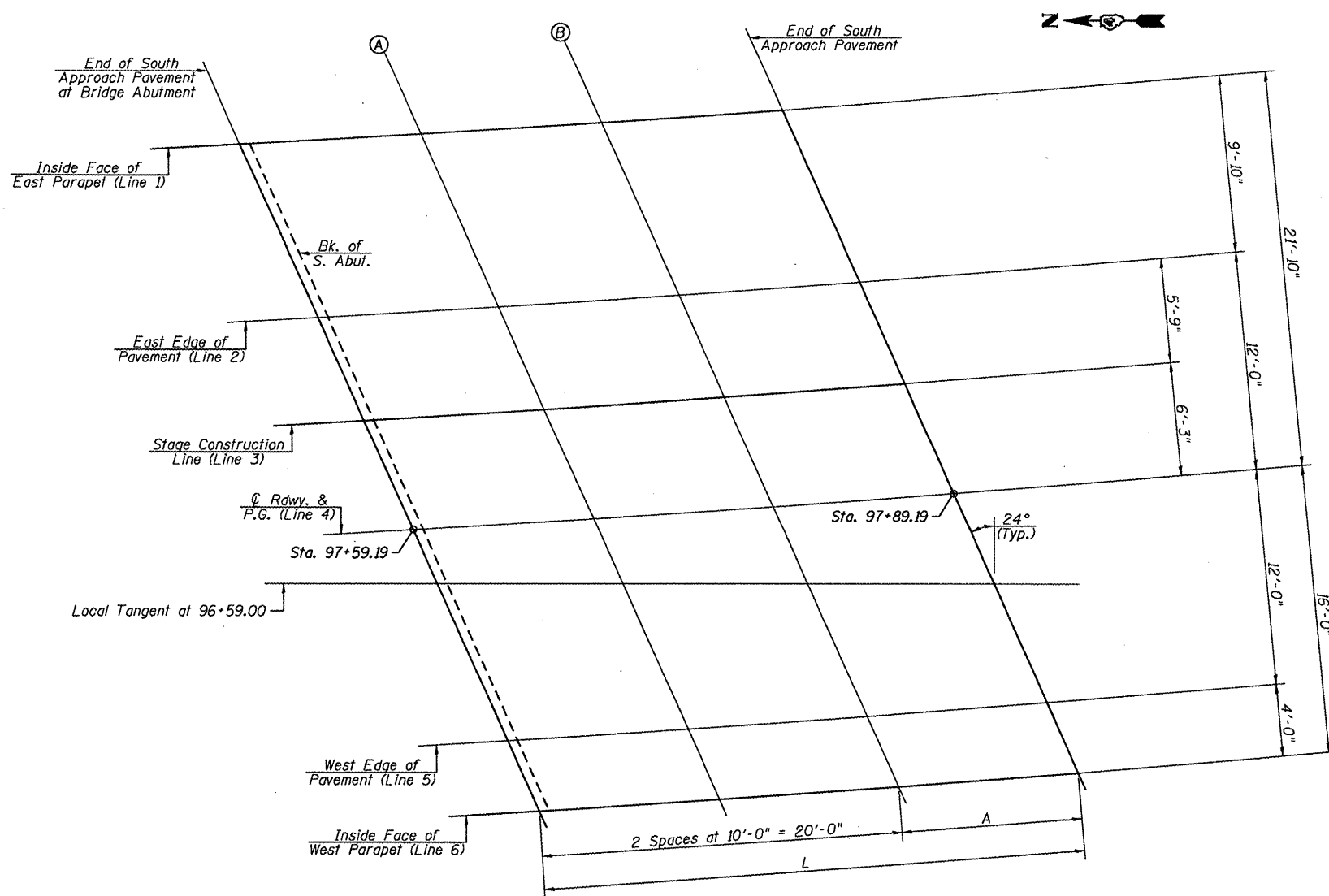
Location	Station	Offset	Theoretical Grade Elevations
End of S. Approach Pavmt. ● Bridge Abutment	97+63.66	12.00 ft.	472.81
A	97+73.59	12.00 ft.	472.70
B	97+83.52	12.00 ft.	472.59
End of S. Approach Pavmt.	97+93.42	12.00 ft.	472.48

INSIDE FACE OF WEST PARAPET

Location	Station	Offset	Theoretical Grade Elevations
End of S. Approach Pavmt. ● Bridge Abutment	97+65.14	16.00 ft.	472.95
A	97+75.05	16.00 ft.	472.84
B	97+84.95	16.00 ft.	472.73
End of S. Approach Pavmt.	97+94.82	16.00 ft.	472.62

SPACING FOR TOP OF APPROACH ELEVATIONS

LINE	RADIUS	L	A
1	1663.59	30'-0 ⁵ / ₈ "	10'-0 ⁵ / ₈ "
2	1673.42	30'-0 ³ / ₈ "	10'-0 ³ / ₈ "
3	1679.17	30'-0 ⁰ / ₈ "	10'-0 ⁰ / ₈ "
4	1685.42	30'-0"	10'-0"
5	1697.42	29'-11 ⁵ / ₈ "	9'-11 ⁵ / ₈ "
6	1701.42	29'-11 ¹ / ₂ "	9'-11 ¹ / ₂ "



LAYOUT PLAN - SOUTH APPROACH ELEVATIONS

Note: Horizontal Dimensions given are along each line.

TOP OF SOUTH APPROACH
SLAB ELEVATIONS
ILLINOIS ROUTE 26 OVER
COFFEE CREEK
F.A.S. ROUTE 2370
SECTION I-BR
PUTNAM COUNTY
STA. 96+59.00
STRUCTURE NO. 078-0046