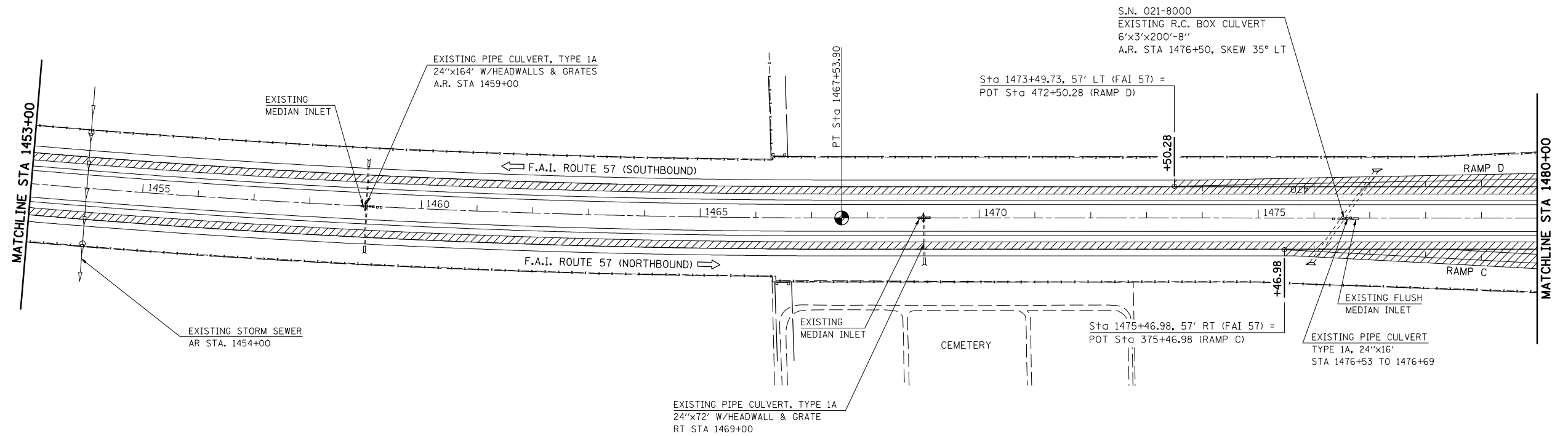
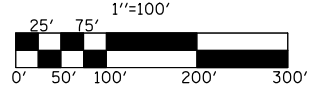


F.A.I. RTE.	SECTION	COUNTY	TOTAL SHEETS	SHEET NO.
57	*	DOUGLAS	76	30
STA. 1453+00		TO STA. 1480+00		
FED. ROAD DIST. NO.	ILLINOIS	FED. AID PROJECT		
*(15,21-25,21-26,27)RS-1				

EXIST. CURVE DATA
 PI STA. = 1460+21.14
 $\Delta = 4^\circ 53' 17''$ (LT)
 $D = 0^\circ 20' 00''$
 $R = 17,188.76'$
 $T = 733.66'$
 $L = 1,466.42'$
 $E = 15.65'$
 $e = \text{-----}$
 $T.R. = \text{-----}$
 $S.E. RUN = \text{-----}$
 $P.C. STA. = 1452+87.48$
 $P.T. STA. = 1467+53.90$



LEGEND	
	HMA SURFACE REMOVAL - 3/4"



SEC. 10, T. 14 N., R. 8 E., 3RD P.M.

ILLINOIS DEPARTMENT OF TRANSPORTATION
PLAN VIEW
 F.A.I. ROUTE 57
 SECTION (15,21-25,21-26,27)RS-1
 DOUGLAS COUNTY

SCALE: 1" = 100'
 DATE: 01/19/06

DRAWN BY: J.P.
 CHECKED BY: K.D.

PLOT DATE = 8/21/2008
 FILE NAME = c:\projects\1501305 (v8)\100plans\1501305.dgn
 PLOT SCALE = 211.7647' / IN.
 USER NAME = sheehyjm