

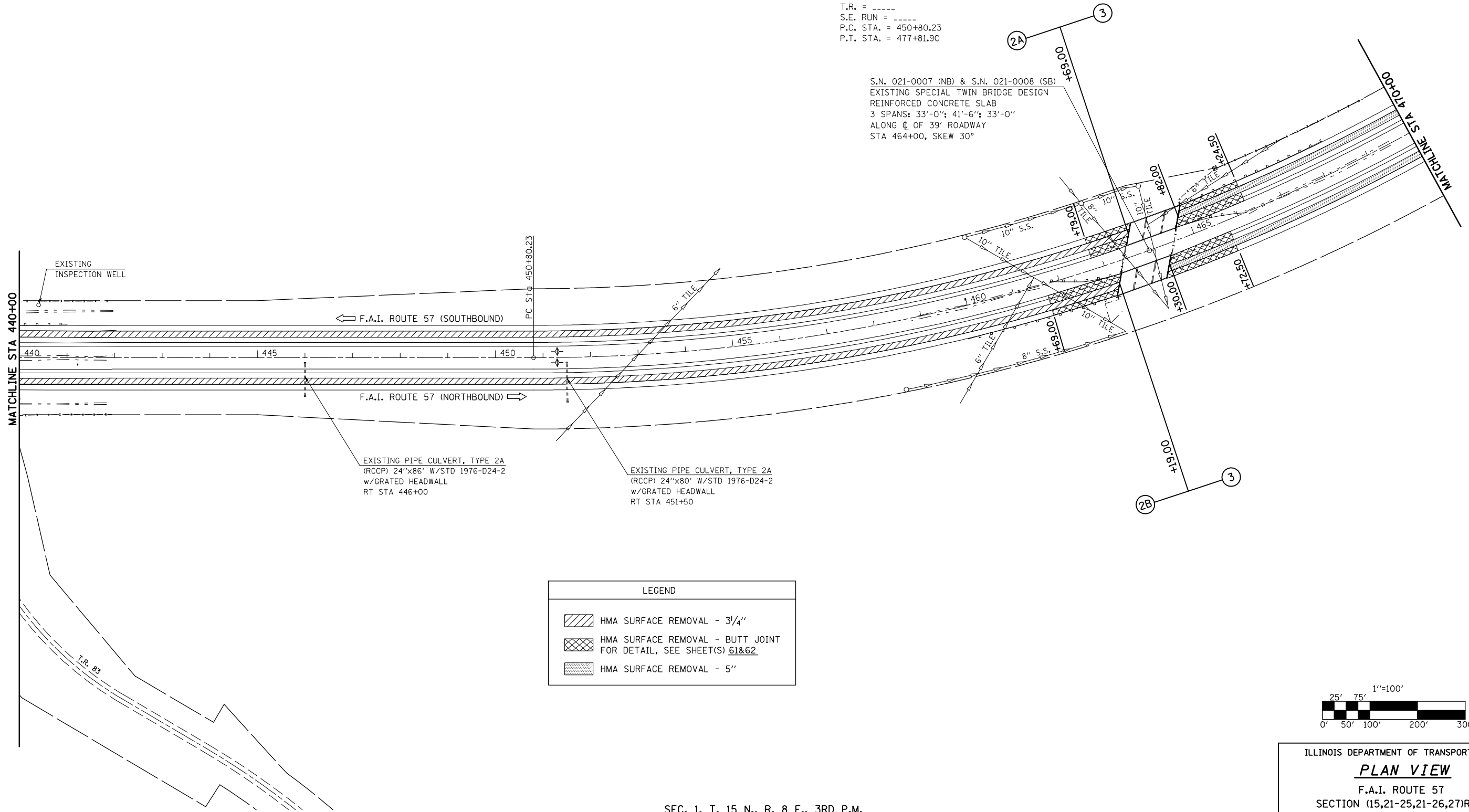
F.A.I. RTE.	SECTION	COUNTY	TOTAL SHEETS	SHEET NO.
57	*	DOUGLAS	76	43

STA. 440+00 TO STA. 470+00  
 FED. ROAD DIST. NO. ILLINOIS FED. AID PROJECT  
 \*(15,21-25,21-26,27)RS-1

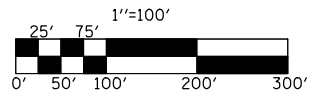
SEC. 2, T. 15 N., R. 8 E., 3RD P.M.

EXIST. CURVE DATA  
 PI STA. = 464+90.35  
 $\Delta = 40^\circ 31' 30''$  (LT)  
 $D = 1^\circ 30' 00''$   
 $R = 3,819.72'$   
 $T = 1,410.12'$   
 $L = 2,701.67'$   
 $E = 251.97'$   
 $e = \text{-----}$   
 $T.R. = \text{-----}$   
 $S.E. \text{ RUN} = \text{-----}$   
 $P.C. \text{ STA.} = 450+80.23$   
 $P.T. \text{ STA.} = 477+81.90$

S.N. 021-0007 (NB) & S.N. 021-0008 (SB)  
 EXISTING SPECIAL TWIN BRIDGE DESIGN  
 REINFORCED CONCRETE SLAB  
 3 SPANS: 33'-0"; 41'-6"; 33'-0"  
 ALONG C OF 39' ROADWAY  
 STA 464+00, SKEW 30°



LEGEND	
	HMA SURFACE REMOVAL - 3/4"
	HMA SURFACE REMOVAL - BUTT JOINT FOR DETAIL, SEE SHEET(S) 61&62
	HMA SURFACE REMOVAL - 5"



SEC. 1, T. 15 N., R. 8 E., 3RD P.M.

ILLINOIS DEPARTMENT OF TRANSPORTATION  
**PLAN VIEW**  
 F.A.I. ROUTE 57  
 SECTION (15,21-25,21-26,27)RS-1  
 DOUGLAS COUNTY

SCALE: 1" = 100'  
 DATE: 01/19/06

DRAWN BY: J.P.  
 CHECKED BY: K.D.