

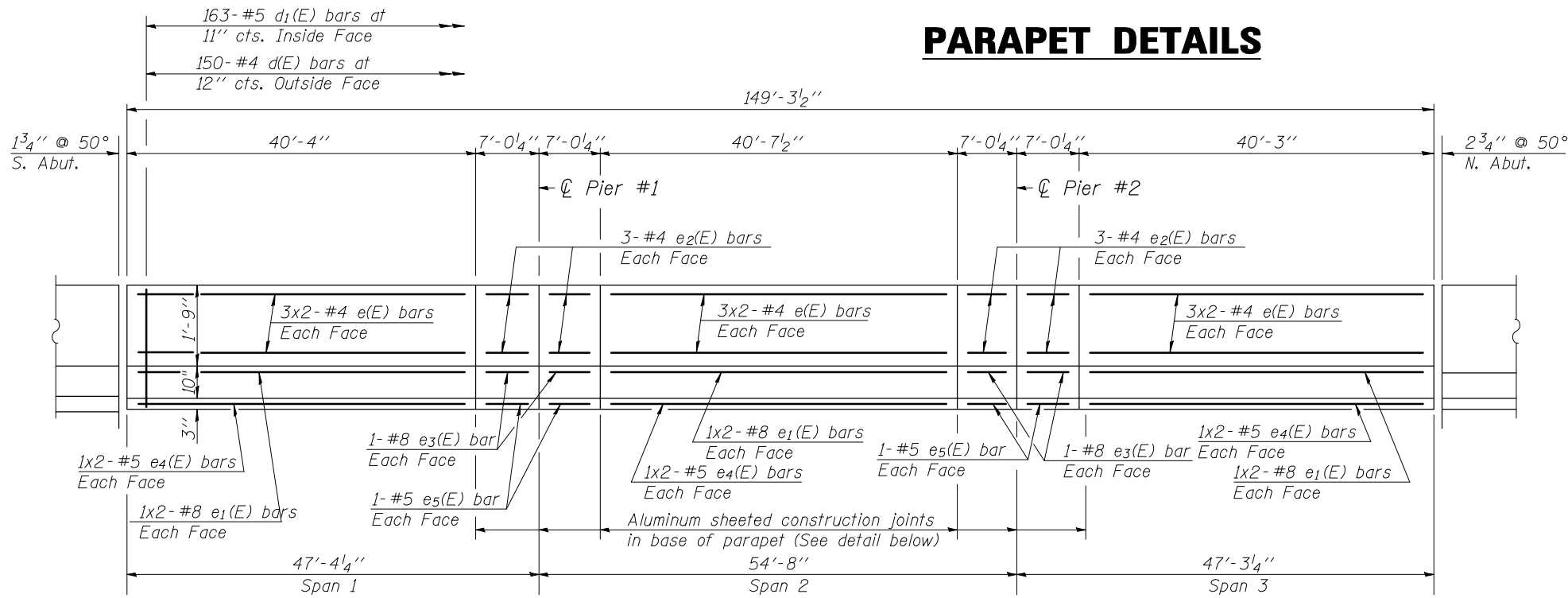
F.A.I. RTE.	SECTION	COUNTY	TOTAL SHEETS	SHEET NO.
57	*	DOUGLAS	76	50

\*(15,21-25,21-26,27)RS-1

# PARAPET DETAILS

## BAR LIST

Bar	No.	Size	Length	Shape
d(E)	150	#4	3'-0"	┌
d <sub>1</sub> (E)	163	#5	3'-0"	┌
e(E)	36	#4	20'-11"	—
e <sub>1</sub> (E)	12	#8	21'-11"	—
e <sub>2</sub> (E)	24	#4	6'-9"	—
e <sub>3</sub> (E)	8	#8	6'-9"	—
e <sub>4</sub> (E)	12	#5	21'-1"	—
e <sub>5</sub> (E)	8	#5	6'-9"	—



INSIDE ELEVATION OF PARAPET

Notes:

Reinforcement bars shall not pass through aluminum sheets.

Preformed Joint Seals and steel plates at the ends of the parapet shall be saved and reused. See Joint Details on Sheet 5 of 5.

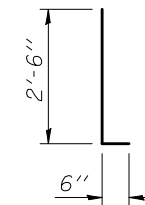
## BILL OF MATERIAL

ITEM	UNIT	QUANTITY
Concrete Removal	Cu Yd	15.9
Concrete Superstructure	Cu Yd	15.9
Protective Coat	Sq Yd	58.0
Reinforcement Bars, Epoxy Coated	Pound	2,590

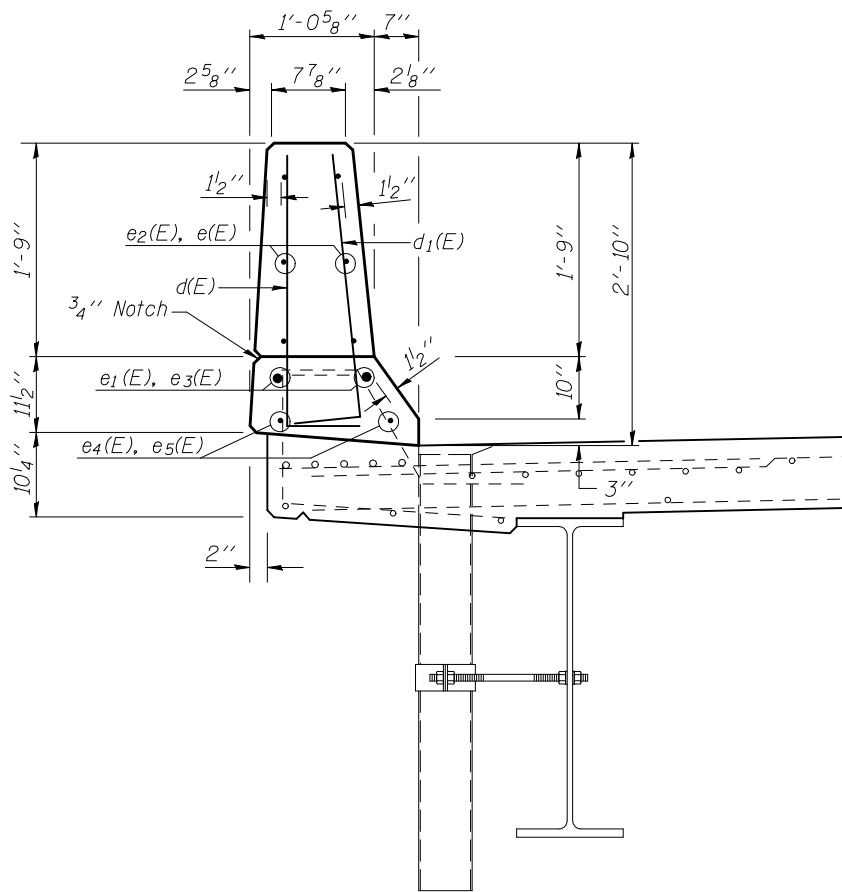
Bars indicated thus 1x2- #8 etc., indicates 1 line of bars with 2 lengths per line.

### MINIMUM BAR LAPS

- #4 bar = 1'-4"
- #8 bar = 3'-5"
- #5 bar = 1'-8"

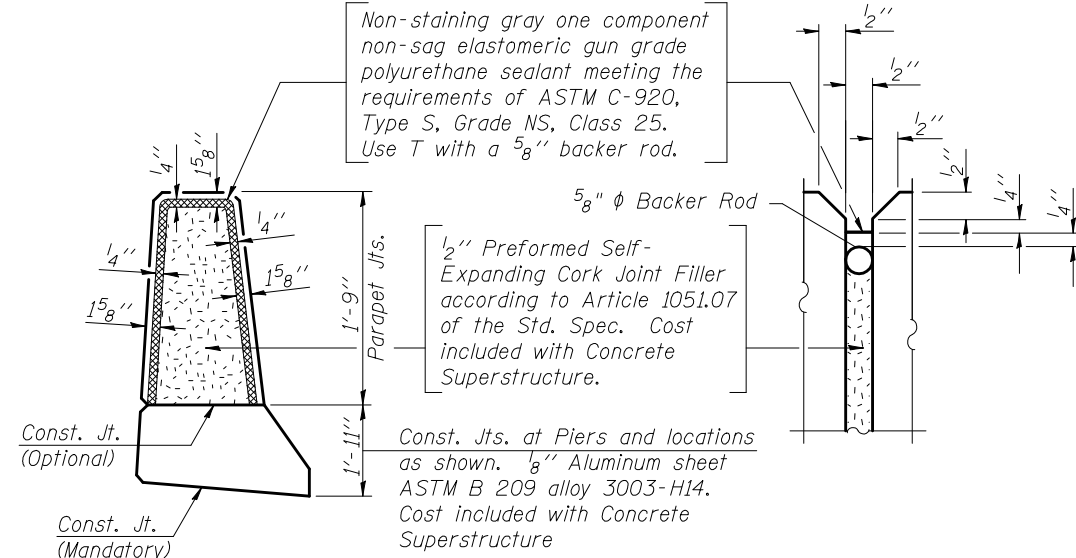


### BAR d(E) & d<sub>1</sub>(E)



SECTION THRU PARAPET

Non-staining gray one component non-sag elastomeric gun grade polyurethane sealant meeting the requirements of ASTM C-920, Type S, Grade NS, Class 25. Use T with a 5/8" backer rod.



PARAPET JOINT DETAILS

F.A.I. 57 OVER  
 ABANDONED RAILROAD  
 SECTION 21-26V  
 DOUGLAS COUNTY  
 S.N. 021-0001 N.B.

SHEET 4 OF 5

ILLINOIS DEPARTMENT OF TRANSPORTATION  
**PARAPET DETAILS**  
 F.A.I. ROUTE 57  
 SECTION (15,21-25,21-26,27)RS-1  
 DOUGLAS COUNTY

SCALE: NOT TO SCALE  
 DATE: 02/14/08

DRAWN BY: J.P.  
 CHECKED BY: K.D.