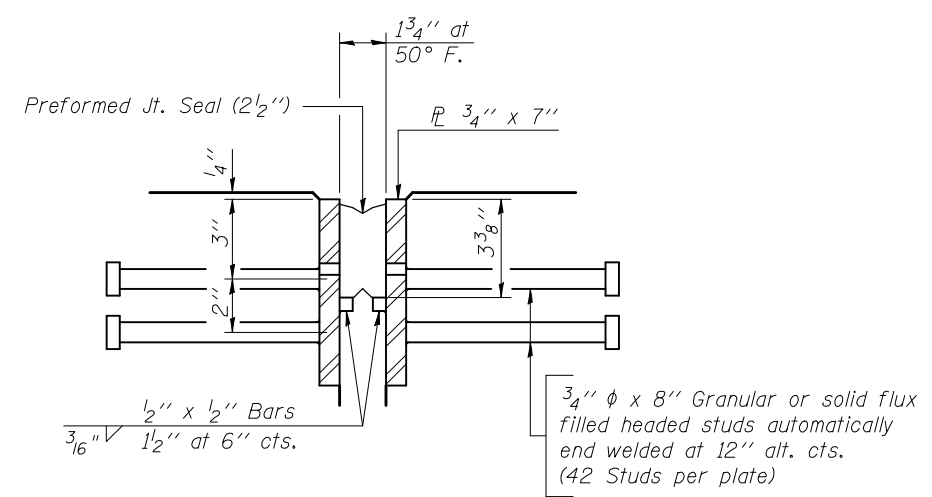


CONTRACT NO. 70465				
F.A.I. RTE.	SECTION	COUNTY	TOTAL SHEETS	SHEET NO.
57	*	DOUGLAS	76	51

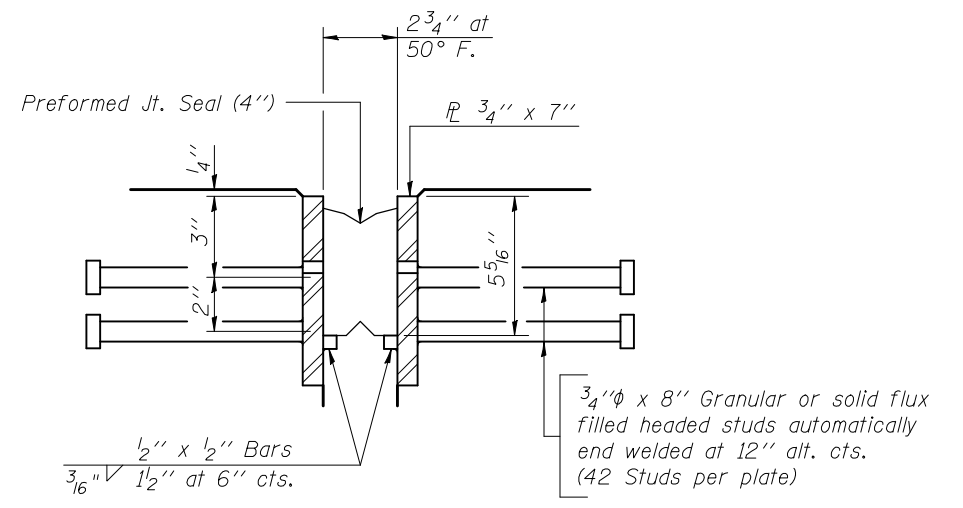
\* (15,21-25,21-26,27)RS-1

## EXISTING JOINT DETAILS

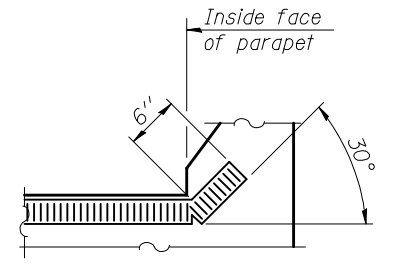
**FOR INFORMATION ONLY**



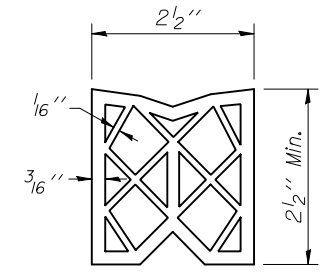
DETAIL SOUTH EXPANSION JOINT



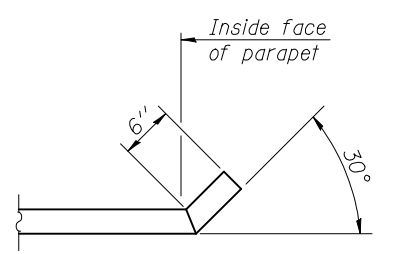
DETAIL NORTH EXPANSION JOINT



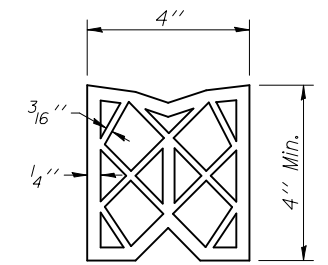
END TREATMENT THRU PARAPET



PREFORMED JOINT SEAL (2 1/2 inches)  
AT SOUTH JOINT



END OF STEEL PLATE THRU PARAPET



PREFORMED JOINT SEAL (4 inches)  
AT NORTH JOINT

Notes:  
Steel plates at the ends of the parapets shall be saved and reused. The preformed joint seals may be partially removed as necessary to complete the proposed work. Reattach the preformed joint seals according to Article 520.06 of the Std. Specs. Cost included with Concrete Superstructure

F.A.I. 57 OVER  
ABANDONED RAILROAD  
SECTION 21-26VB  
DOUGLAS COUNTY  
S.N. 021-0001 N.B.

SHEET 5 OF 5

ILLINOIS DEPARTMENT OF TRANSPORTATION  
**EXISTING JOINT DETAILS**  
F.A.I. ROUTE 57  
SECTION (15,21-25,21-26,27)RS-1  
DOUGLAS COUNTY

SCALE: NOT TO SCALE  
DATE: 02/14/08  
DRAWN BY: J.P.  
CHECKED BY: K.D.

PLOT DATE = 8/21/2008  
FILE NAME = c:\projects\1521-25\1521-26\1521-26\1521-26.dgn  
PLOT SCALE = 1/8" = 1'-0"  
USER NAME = sheehyjm