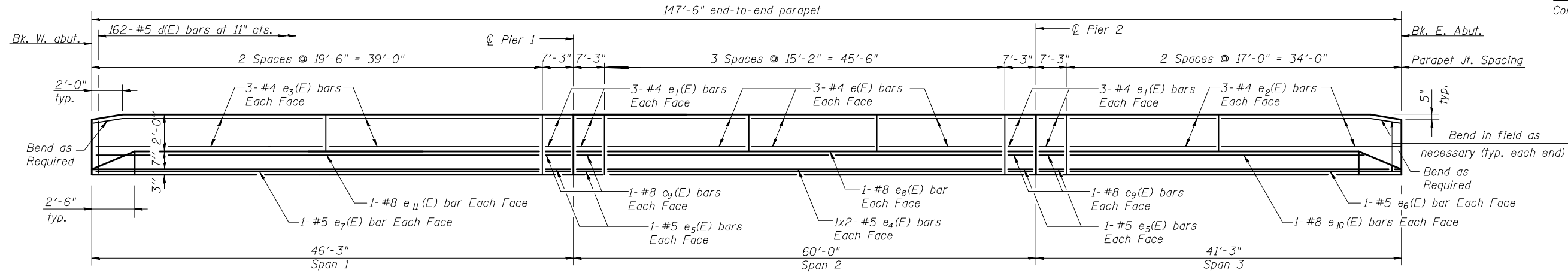
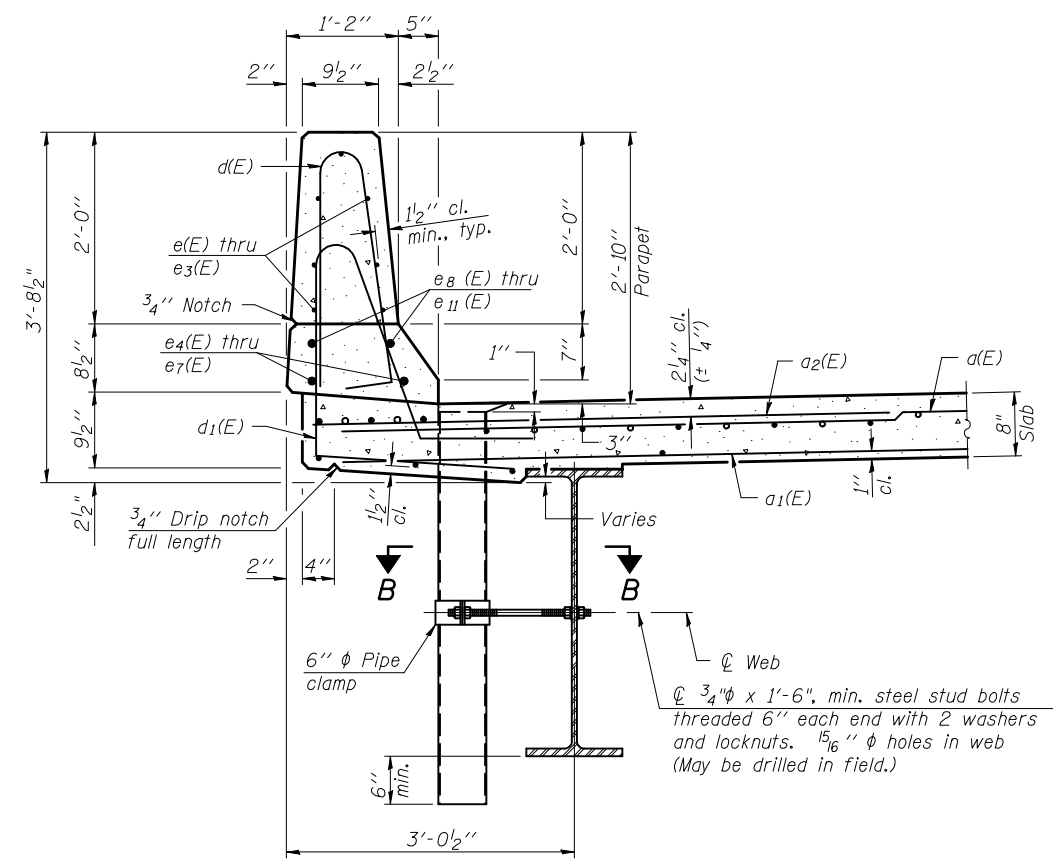


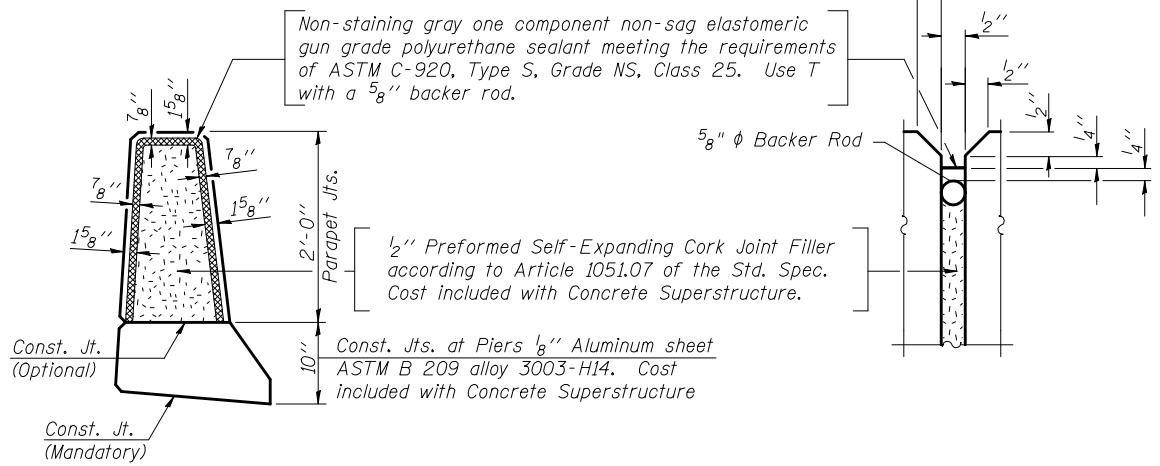
Contract #70517



INSIDE ELEVATION OF PARAPET



SECTION THRU PARAPET

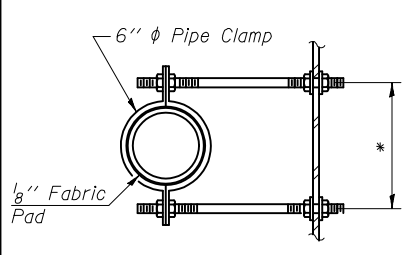


PARAPET JOINT DETAILS

Notes:
The exterior surfaces of the floor drains shall be painted with the finish coat as specified in the special provisions for Cleaning and Painting New Metal Structures. The exterior surfaces of the drains shall be cleaned according to Steel Structures Painting Council's Spec. SSPC-SP1 prior to painting.
Fiberglass pipe shall conform to ASTM D 2996, with short-time rupture strength hoop tensile stress of 30,000 p.s.i. minimum.

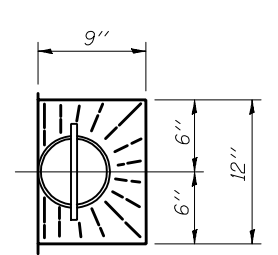
MINIMUM BAR LAP

#5 bar = 2'-2"

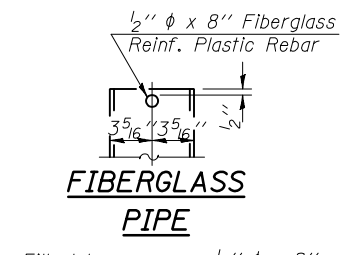


SECTION B-B

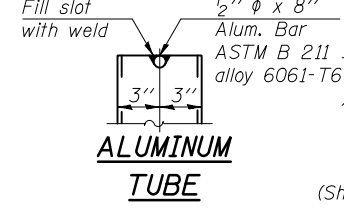
* Dimension as required by Pipe Clamp



TOP PLAN

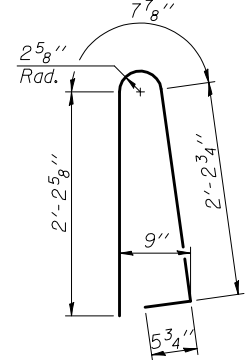


FIBERGLASS PIPE

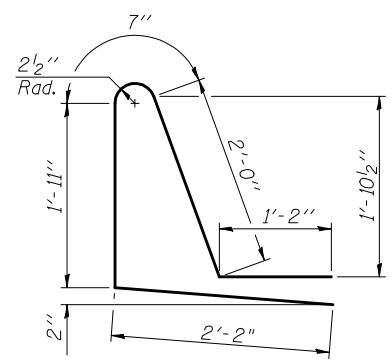


ALUMINUM TUBE

TOP PLAN (Showing Aluminum Tube)



BAR d(E)



BAR d1(E)

SUPERSTRUCTURE BILL OF MATERIAL

Bar	No.	Size	Length	Shape
a(E)	253	#5	42'-2"	—
a ₁ (E)	197	#5	42'-1"	—
a ₂ (E)	254	#6	6'-0"	—
b(E)	184	#5	38'-1"	—
b ₁ (E)	88	#6	34'-6"	—
b ₂ (E)	205	#5	30'-9"	—
d(E)	324	#5	5'-7"	⌋
d ₁ (E)	324	#5	7'-10"	⌋
e(E)	36	#4	14'-10"	—
e ₁ (E)	48	#4	6'-11"	—
e ₂ (E)	24	#4	16'-8"	—
e ₃ (E)	24	#4	19'-2"	—
e ₄ (E)	8	#5	23'-8"	—
e ₅ (E)	16	#5	6'-11"	—
e ₆ (E)	4	#5	33'-8"	—
e ₇ (E)	4	#5	38'-8"	—
e ₈ (E)	4	#8	45'-2"	—
e ₉ (E)	16	#8	6'-11"	—
e ₁₀ (E)	4	#8	33'-8"	—
e ₁₁ (E)	4	#8	38'-8"	—
m(E)	4	#6	41'-0"	—
m ₁ (E)	6	#6	42'-10"	—
m ₂ (E)	24	#6	9'-5"	—
m ₃ (E)	10	#6	7'-0"	—
m ₄ (E)	4	#6	2'-8"	—
s(E)	92	#5	5'-7"	⌋
s ₁ (E)	82	#4	9'-0"	⌋
v(E)	86	#5	3'-4"	⌋
Reinforcement Bars, Epoxy Coated		Pound	50780	
Concrete Superstructure		Cu. Yds.	218.5	
Floor Drains		Each	16	
Bridge Deck Grooving		Sq. Yd.	623	
Protective Coat		Sq. Yd.	780	
Bar Splicers		Each	84	

Bars indicated thus 1 x 2 -#5 etc. indicates 1 line of bars with 2 lengths per line.
See Sheet 9 of 22 for details of bars s(E), s₁(E) and v(E).

SUPERSTRUCTURE DETAILS
US. ROUTE 150
OVER KICKAPOO CREEK
FAU ROUTE 6406 SECTION 1(BR-2)
MCLEAN COUNTY
STATION 407+23.50
STRUCTURE NO. 057-0246