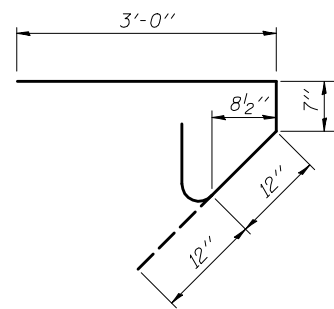
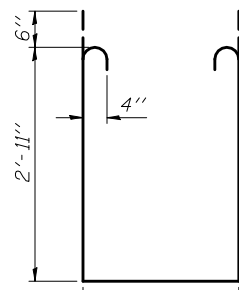


ROUTE NO.	SECTION	COUNTY	TOTAL SHEETS	SHEET NO.	SHEET NO. 9 22 SHEETS
F.A.U. 6406	1(BR-2)	MCLEAN	74	33	
FED. ROAD DIST. NO. 5	ILLINOIS	FED. AID PROJECT-			

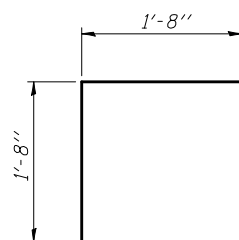
Contract #70517



BAR s(E)



BAR s1(E)

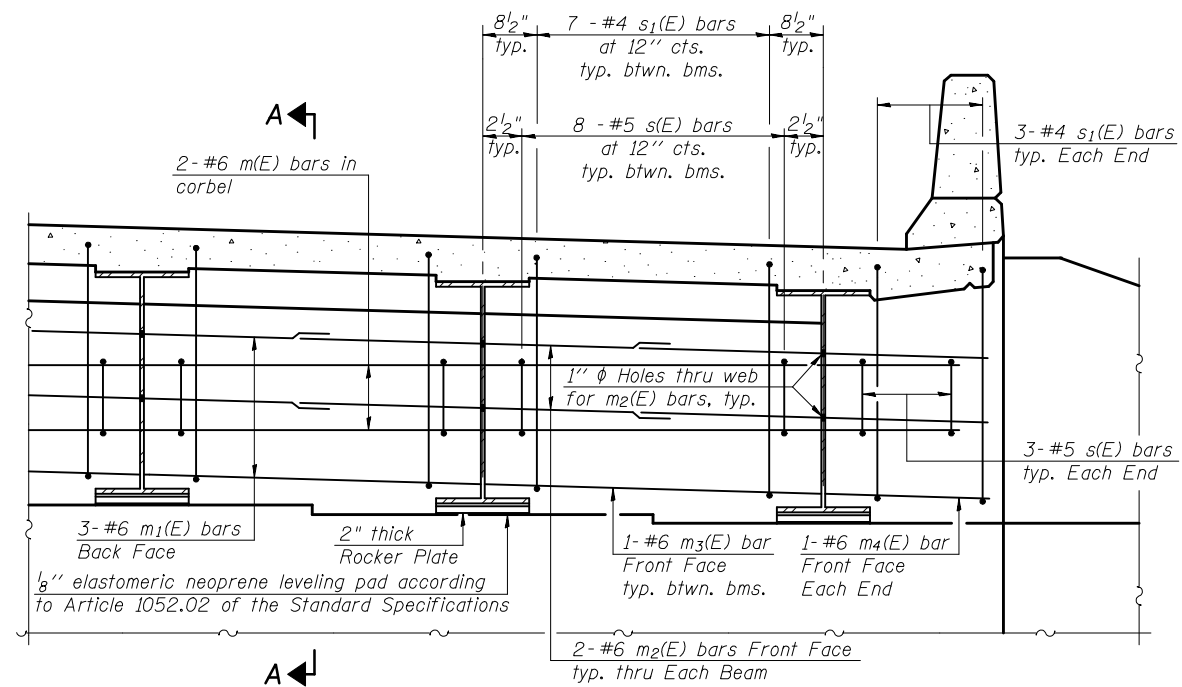


BAR v(E)

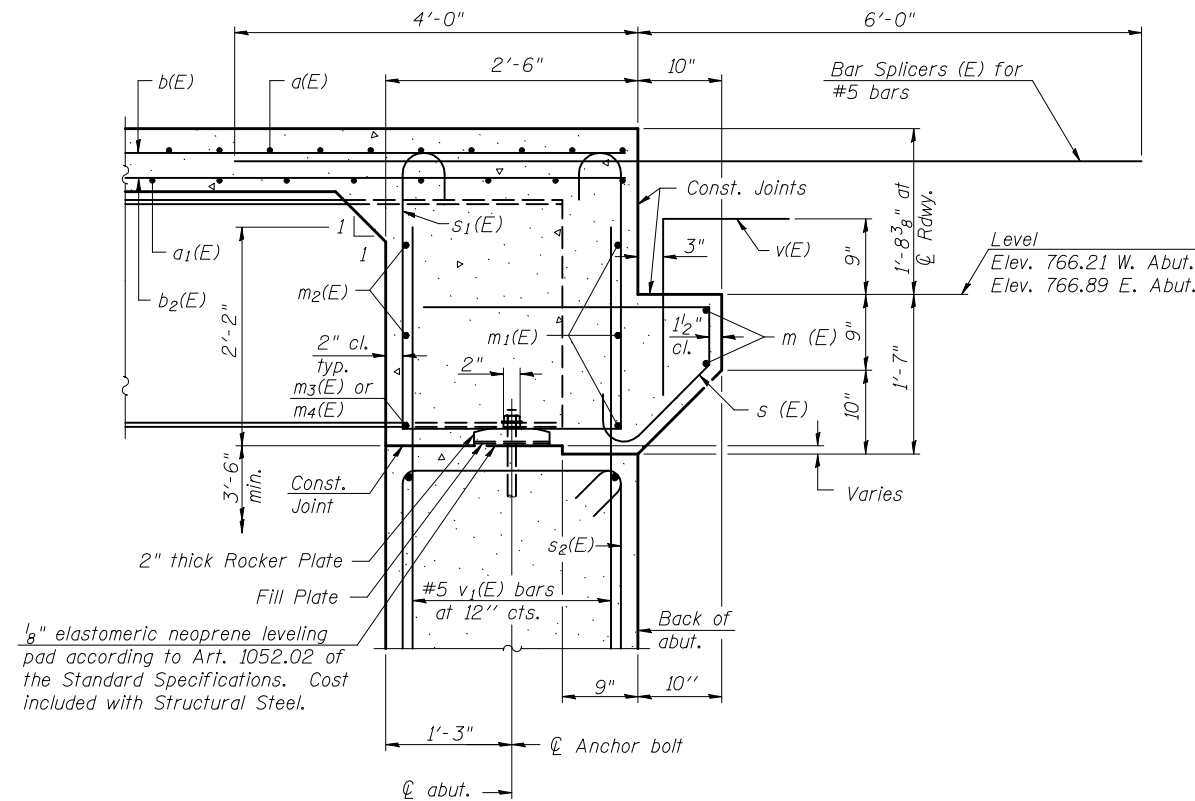
Notes:
Reinforcement bars in diaphragm are billed with superstructure on sheet 8 of 22.
Concrete in diaphragm is included with Concrete Superstructure on sheet 8 of 22.
For details of bar splicers see sheet 16 of 22.

MINIMUM BAR LAP

#6 bar = 2'-9"



DIAPHRAGM ELEVATION AT ABUTMENT



SECTION A-A

ABUTMENT DIAPHRAGM DETAILS
US. ROUTE 150
OVER KICKAPOO CREEK
FAU ROUTE 6406 SECTION 1(BR-2)
MCLEAN COUNTY
STATION 407+23.50
STRUCTURE NO. 057-0246