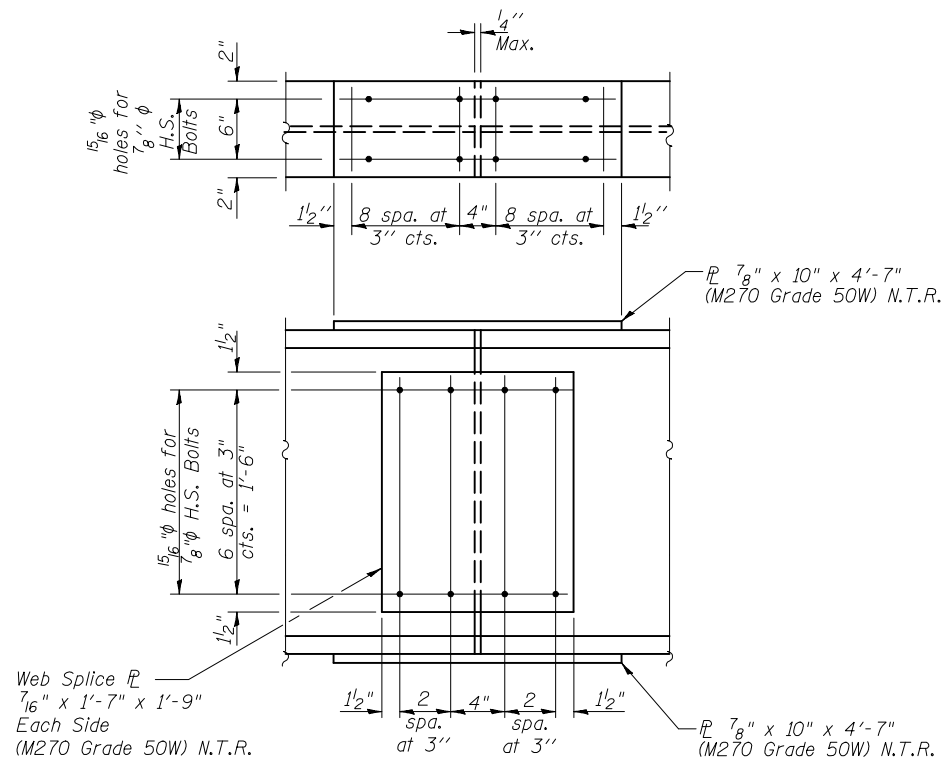


ROUTE NO.	SECTION	COUNTY	TOTAL SHEETS	SHEET NO.
F.A.U. 6406	1(BR-2)	MCLEAN	74	35
FED. ROAD DIST. NO. 5	ILLINOIS	FED. AID PROJECT-		

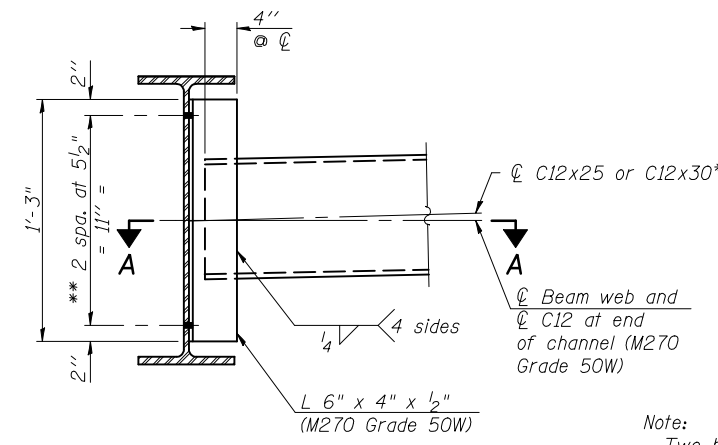
SHEET NO. 11
22 SHEETS

Contract #70517



SPLICE

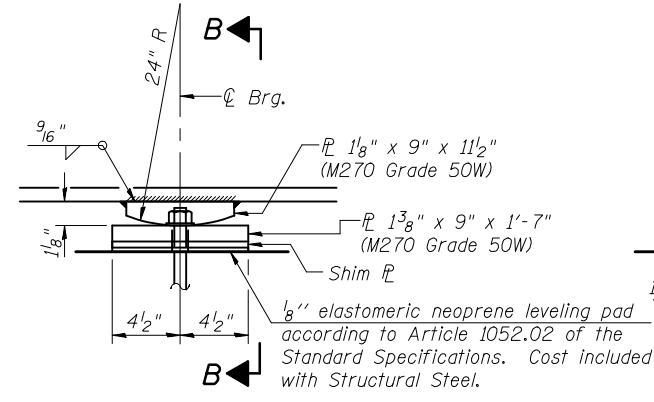
Note:
Steel designated with N.T.R. shall conform to the requirements for Notch Toughness (Zone 2).



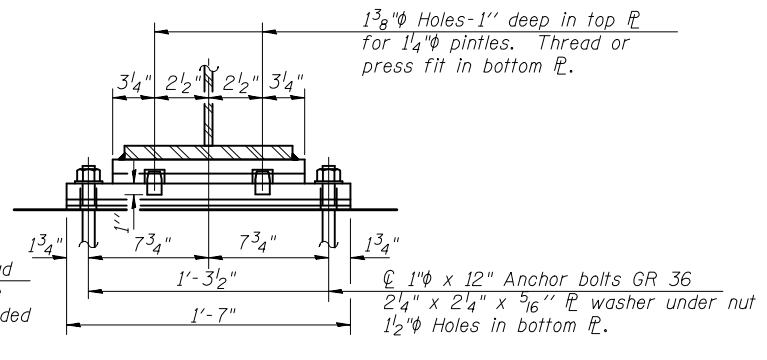
INTERIOR DIAPHRAGM
(30 Required)

Note:
Two hardened washers required for each set of oversized holes.

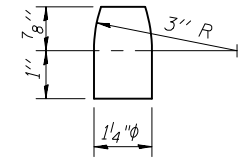
* Alternate channels are permitted to facilitate material acquisition. Calculated weight of structural steel is based on the lighter section.
** 3/4" φ HS bolts, 15/16" φ holes



ELEVATION AT PIER



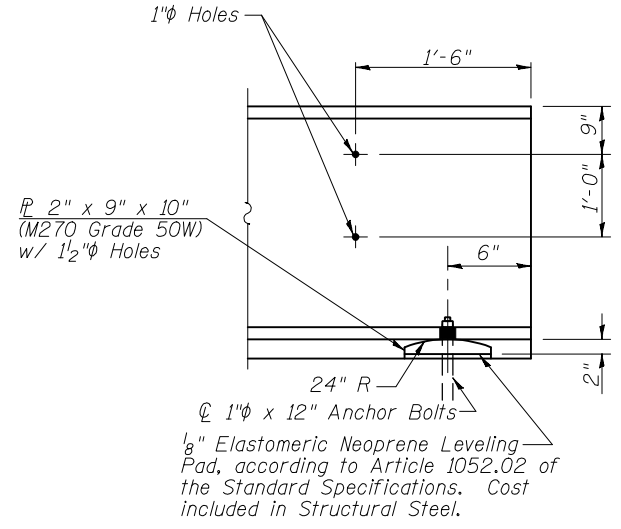
SECTION B-B



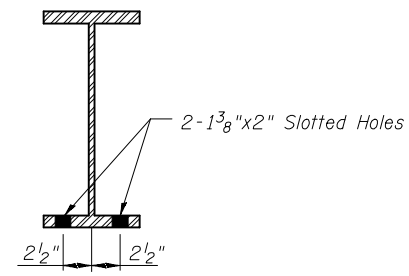
PINTLE

FIXED BEARING AT PIERS
(12 Required)

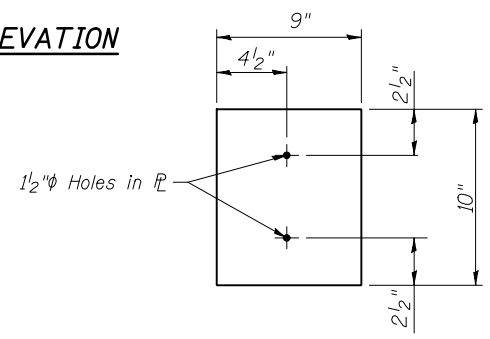
Notes:
Anchor bolts shall be ASTM F1554 all-thread (or an Engineer-approved alternate material) of the grade(s) and diameter(s) specified. ASTM A307 Grade C anchor bolts may be used in lieu of ASTM F1554 Grade 36 (Fy=36ksi). The corresponding specified grade of AASHTO M314 anchor bolts may be used in lieu of ASTM F1554.
Anchor bolts at fixed bearings may be either cast in place or installed in holes drilled after the supported member is in place.
Drilled and set anchor bolts shall be installed according to Article 521.06 of the Standard Specifications.
Two 1/8 in. adjusting shims shall be provided for each bearing in addition to all other plates or shims and placed as shown on bearing details.



ELEVATION



SECTION



NEOPRENE MAT AND ROCKER PLAN AT ABUTMENTS
(12 Required)

STRUCTURAL STEEL DETAILS
US. ROUTE 150
OVER KICKAPOO CREEK
FAU ROUTE 6406 SECTION 1(BR-2)
MCLEAN COUNTY
STATION 407+23.50
STRUCTURE NO. 057-0246