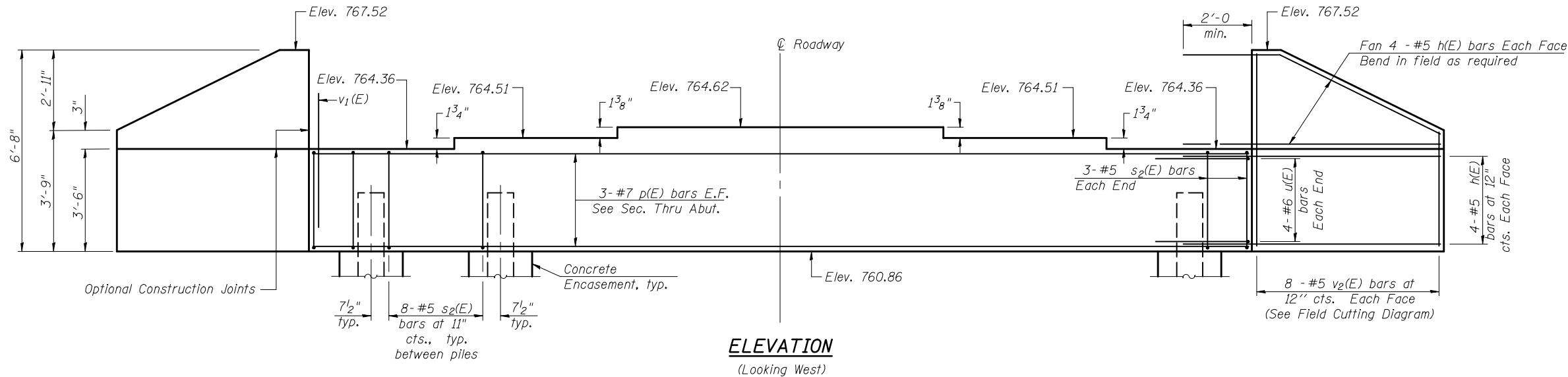
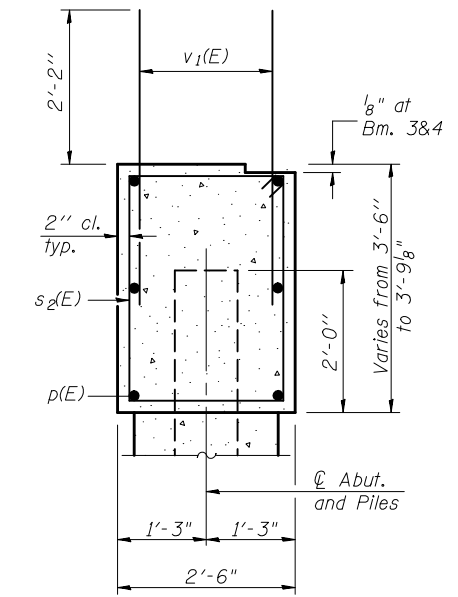


Contract #70517



ELEVATION
(Looking West)



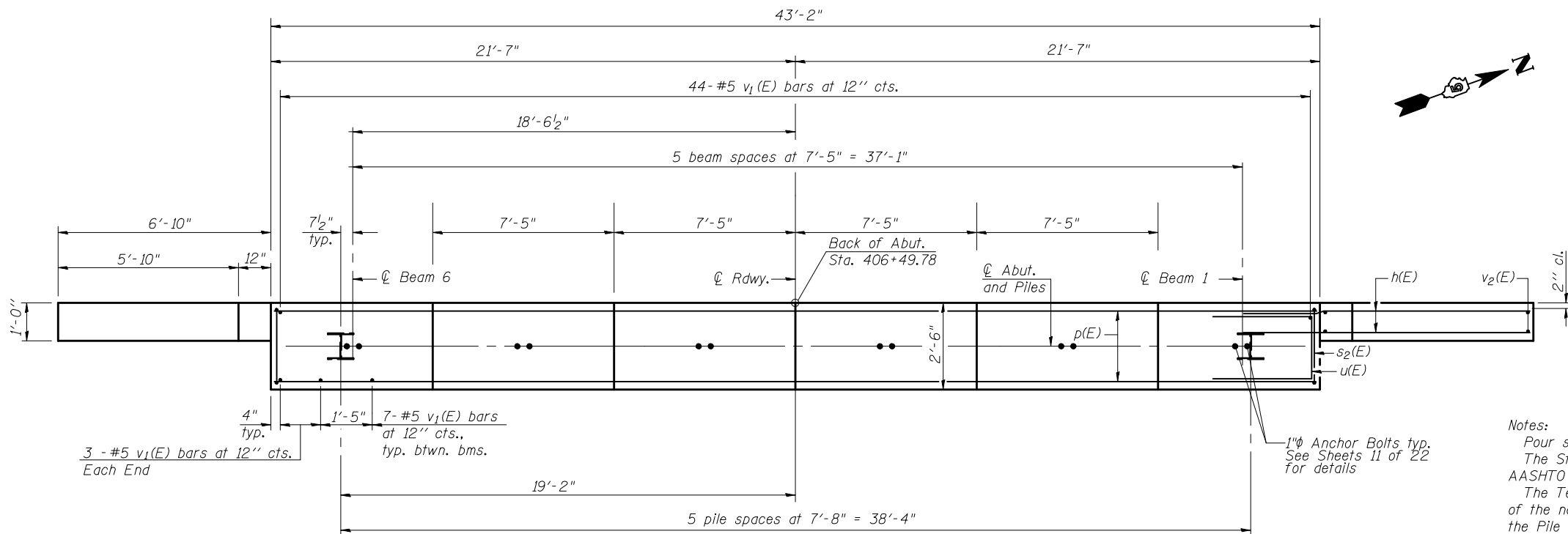
SEC. THRU ABUT..

PILE DATA

Type: HP 12x53
 Nominal Required Bearing: 419 kips
 Allowable Resistance Available: 140 kips
 Est. Length: 71 ft.
 No. Production Piles: 5
 No. Test Piles: 1

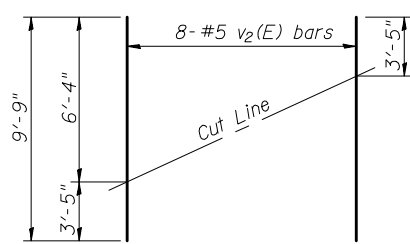
BILL OF MATERIAL

Bar	No.	Size	Length	Shape
h(E)	32	#5	8'-8"	—
p(E)	6	#7	42'-10"	—
s2(E)	46	#5	11'-7"	□
u(E)	8	#6	10'-1"	—
v1(E)	85	#5	4'-4"	—
v2(E)	16	#5	9'-9"	—
Structure Excavation		Cu. Yd.		83.9
Concrete Structures		Cu. Yd.		17.3
Reinforcement Bars, Epoxy Coated		Pound		2040
Furnishing Steel Piles, 12x53		Foot		355
Driving Piles		Foot		355
Test Pile, HP 12x53		Each		1
Concrete Encasement		Cu. Yd.		2.1



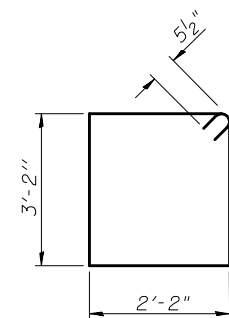
PLAN

Notes:
 Pour steps monolithically with cap.
 The Steel H Piles shall be according to AASHTO M270 Grade 50.
 The Test Pile shall be driven to 110 percent of the nominal required bearing indicated in the Pile Data information.
 Space reinforcement to miss anchor bolts.
 All edges to have 3/4" chamfer except as noted.
 For details of Bar Splicers, see sheet 16 of 22.
 For details of piles and Concrete Encasement, see sheet 17 of 22.

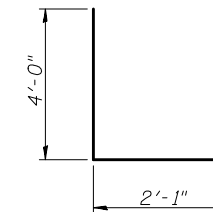


FIELD CUTTING DIAGRAM

Order v2(E) full length. Cut as shown and use remainder of bars in opposite face.



BAR s2(E)



BAR u(E)

WEST ABUTMENT
US. ROUTE 150
OVER KICKAPOO CREEK
FAU ROUTE 6406 SECTION 1(BR-2)
MCLEAN COUNTY
STATION 407+23.50
STRUCTURE NO. 057-0246