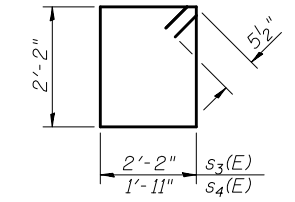
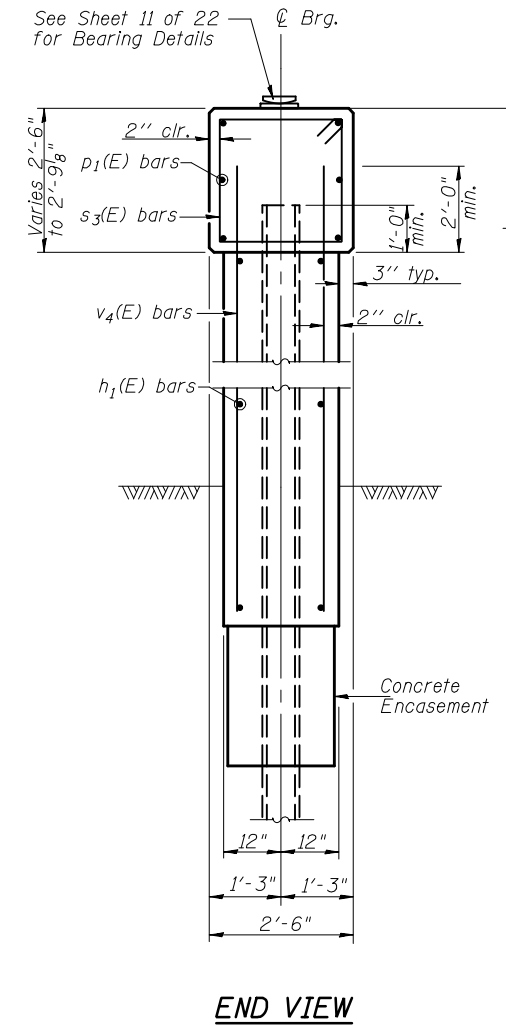
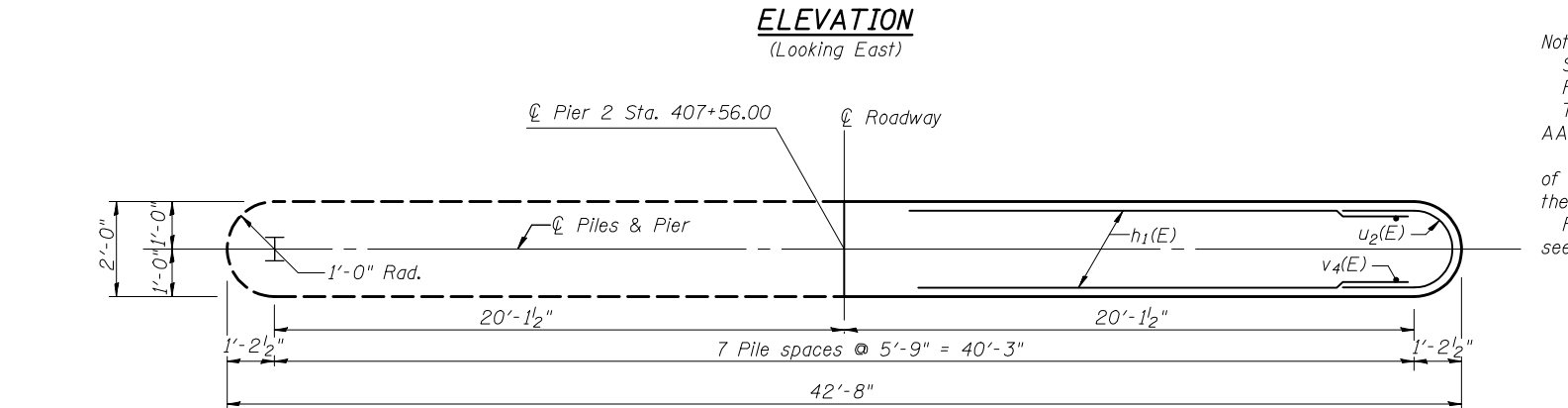
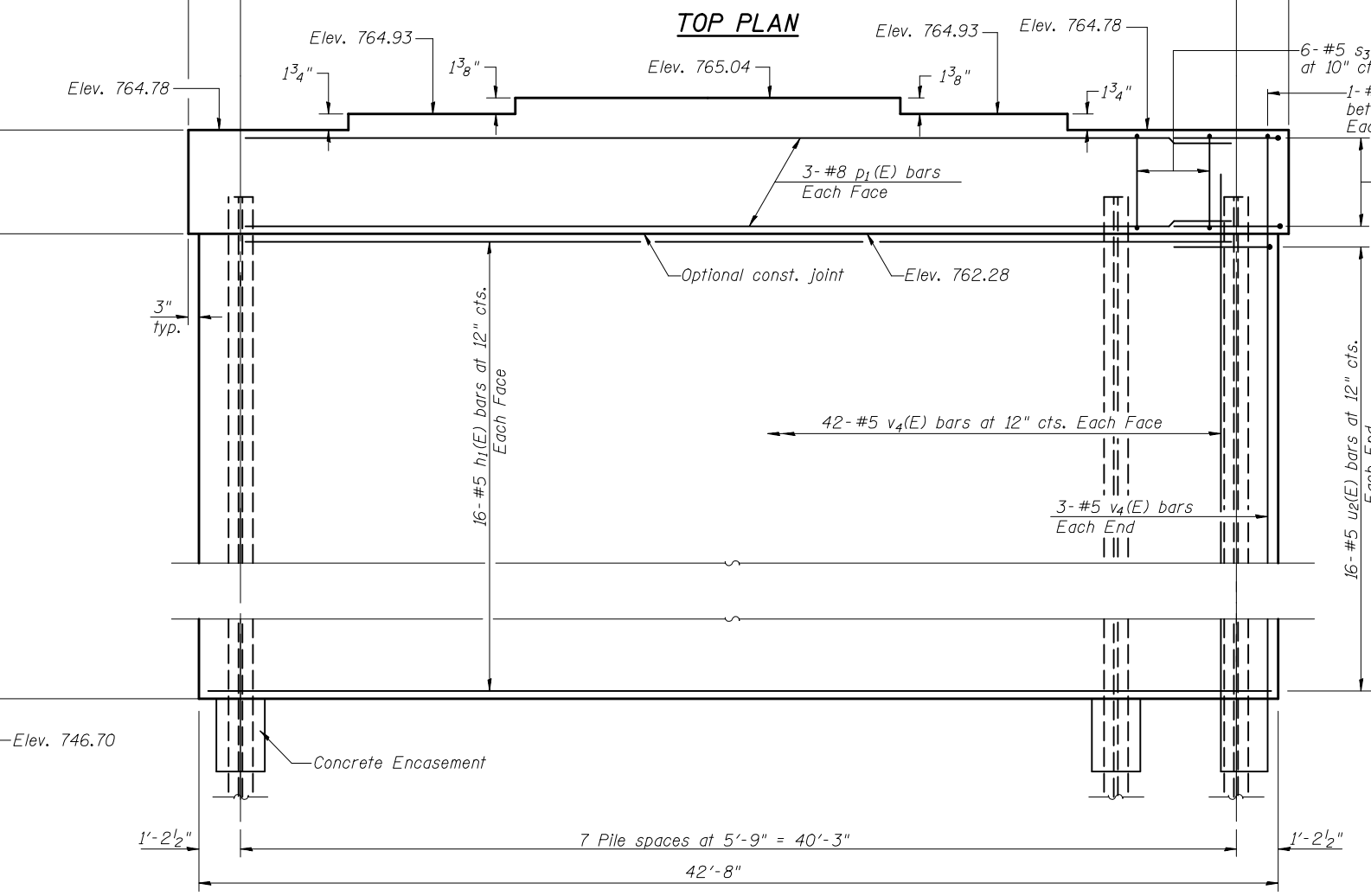
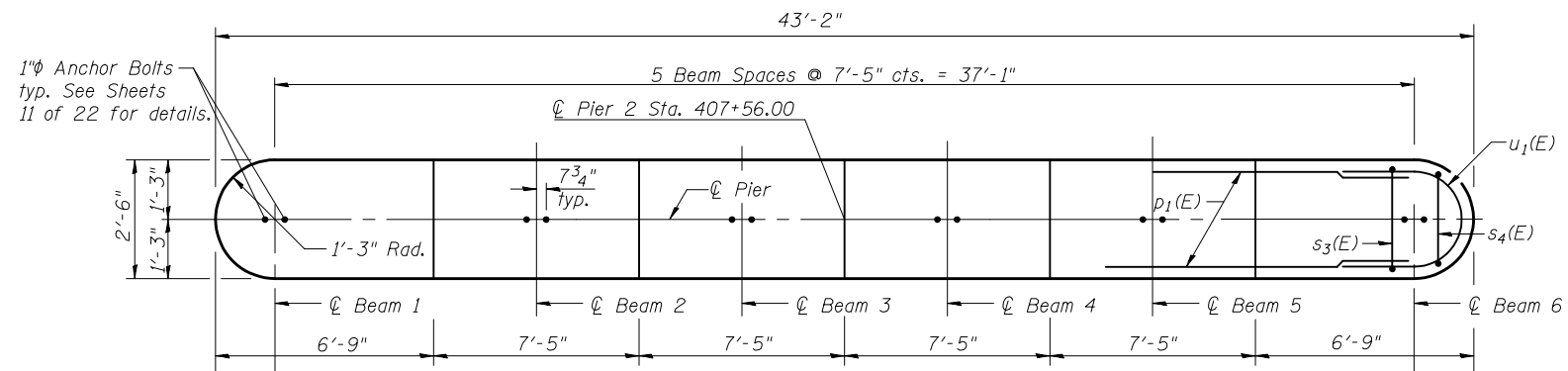
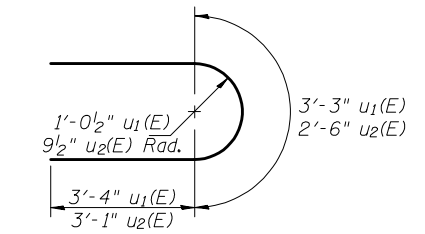


Contract #70517



BAR s3(E) & s4(E)



BARS u1(E) & u2(E)

**BILL OF MATERIAL**

Bar	No.	Size	Length	Shape
h1(E)	32	#5	40'-8"	—
p1(E)	6	#8	40'-8"	—
s3(E)	42	#5	9'-7"	□
s4(E)	2	#5	9'-1"	□
u1(E)	8	#6	9'-11"	U
u2(E)	32	#5	8'-8"	U
v4(E)	90	#5	17'-5"	—
Structure Excavation			Cu. Yd.	56.0
Concrete Structures			Cu. Yd.	59.2
Reinforcement Bars, Epoxy Coated			Pound	4500
Furnishing Steel Piles, 12x53			Foot	483
Driving Piles			Foot	483
Test Pile, HP 12x53			Each	1
Concrete Encasement			Cu. Yd.	2.8
Underwater Structure Excavation Protection, Location 1			Each	1

Notes:  
 Space reinforcement in cap to miss anchor bolts.  
 Pour steps monolithically with cap.  
 The Steel H Piles shall be according to AASHTO M270 Grade 50.  
 The Test Pile shall be driven to 110 percent of the nominal required bearing indicated in the Pile Data information.  
 For details of piles and concrete encasement see sheet 17 of 22.

**PILE DATA**

Type: Steel HP 12x53  
 Nominal Required Bearing: 420 kips  
 Allowable Resistance Available: 140 kips  
 Est. Length: 69 ft.  
 No. Production Piles: 7  
 No. Test Piles: 1

**PIER 2**  
**US. ROUTE 150**  
**OVER KICKAPOO CREEK**  
**FAU ROUTE 6406 SECTION 1(BR-2)**  
**MCLEAN COUNTY**  
**STATION 407+23.50**  
**STRUCTURE NO. 057-0246**