

ROUTE NO.	SECTION	COUNTY	TOTAL SHEETS	SHEET NO.	SHEET NO. 8 21 SHEETS
FAP 836	118 BR-2	Champaign	45	19	
FED. ROAD DIST. NO. 5	ILLINOIS	FED. AID PROJECT-			

**SUPERSTRUCTURE
BILL OF MATERIAL**

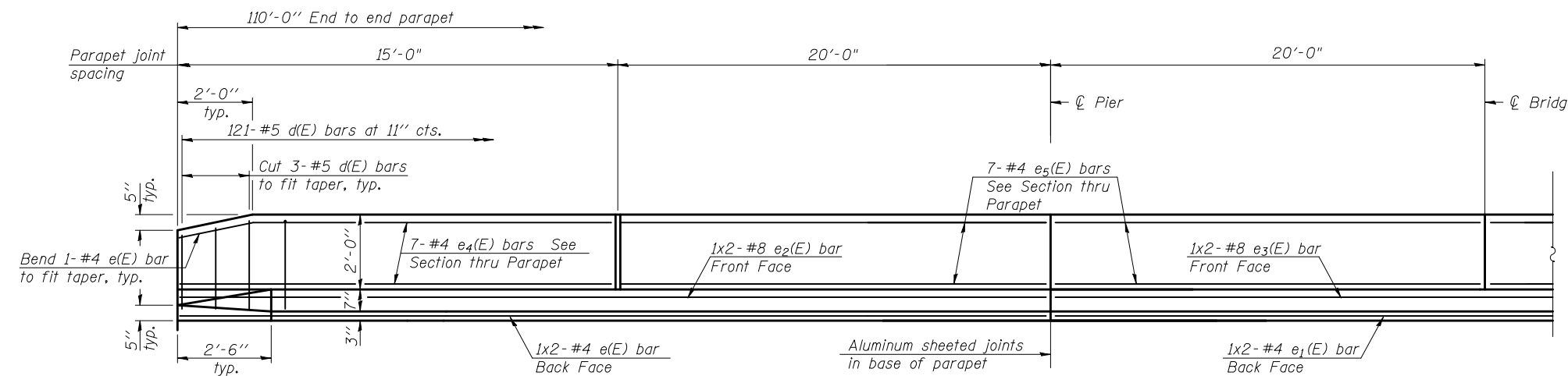
Bar	No.	Size	Length	Shape
a(E)	372	#5	17'-0"	—
a ₁ (E)	260	#5	17'-0"	—
a ₂ (E)	372	#6	6'-0"	—
a ₃ (E)	8	#6	20'-10"	—
b(E)	190	#5	23'-3"	—
b ₁ (E)	70	#6	22'-0"	—
b ₂ (E)	124	#5	28'-8"	—
d(E)	242	#5	5'-7"	—
d ₁ (E)	242	#5	7'-9"	—
e(E)	8	#4	18'-0"	—
e ₁ (E)	4	#4	20'-6"	—
e ₂ (E)	8	#8	19'-0"	—
e ₃ (E)	4	#8	21'-6"	—
e ₄ (E)	28	#4	14'-8"	—
e ₅ (E)	56	#4	19'-8"	—
m(E)	8	#6	19'-11"	—
m ₁ (E)	12	#6	19'-0"	—
m ₂ (E)	24	#6	8'-10"	—
m ₃ (E)	8	#6	6'-6"	—
m ₄ (E)	4	#6	3'-3"	—
m ₅ (E)	4	#6	3'-0"	—
s(E)	92	#5	5'-6"	—
s ₁ (E)	84	#4	8'-7"	—
v(E)	66	#5	3'-4"	—
Bridge Deck Grooving	Sq. Yds.		367	
Protective Coat	Sq. Yds.		482	
Floor Drain	Each		8	
Reinforcement Bars, Epoxy Coated	Pound		32860	
Concrete Superstructure	Cu. Yds.		149	

Bars indicated thus 1 x 2 - #4 etc. indicates 1 line of bars with 2 lengths per line.

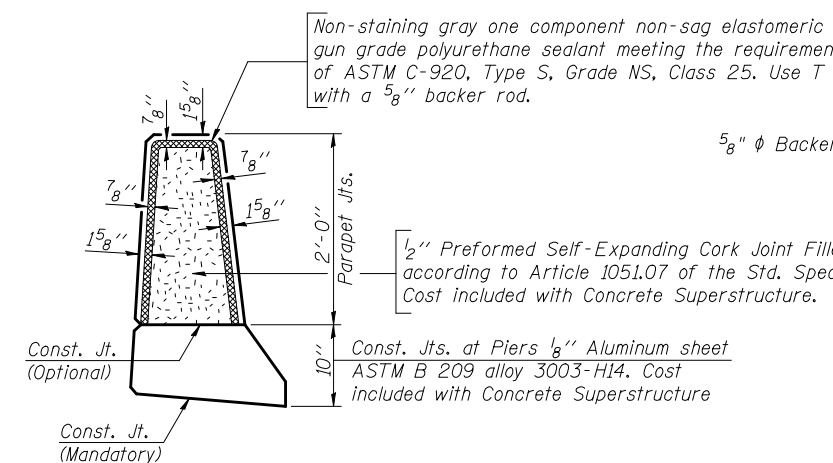
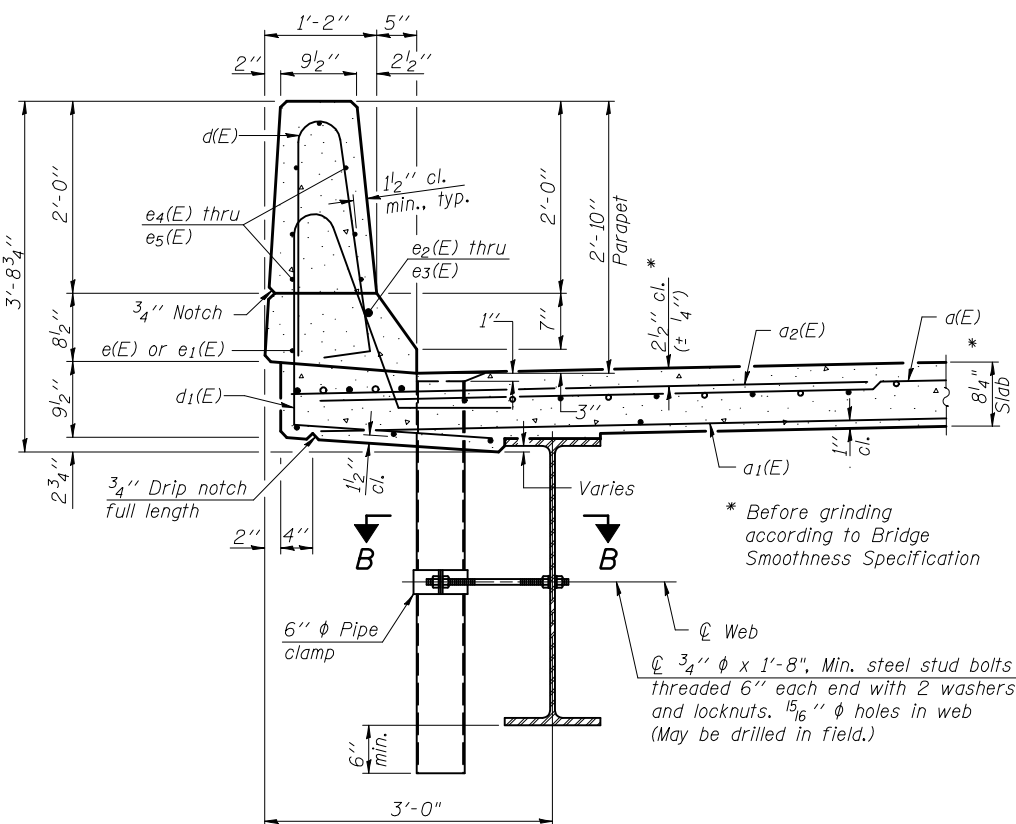
Work this sheet with sheet 7 of 21

MIN. BAR LAP PARAPET

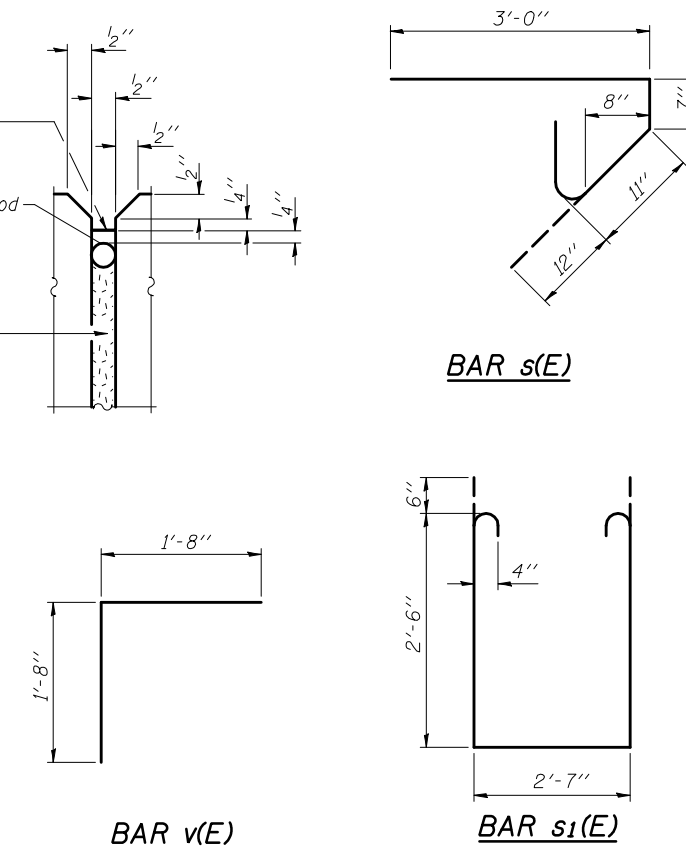
#4 bars = 1'-4"
#8 bars = 3'-5"



INSIDE ELEVATION OF PARAPET

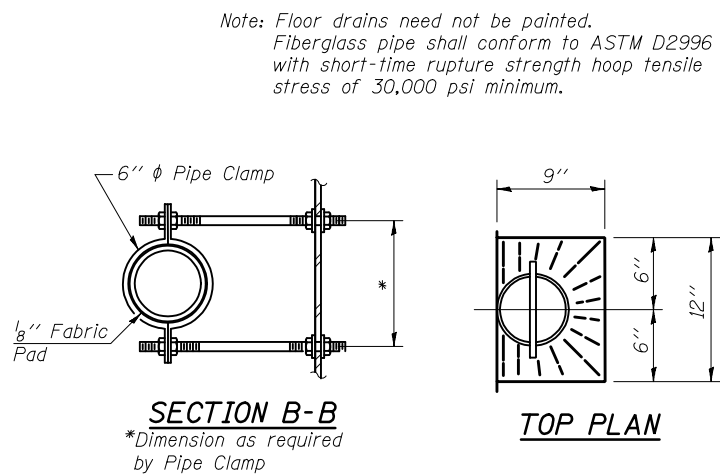


PARAPET JOINT DETAILS



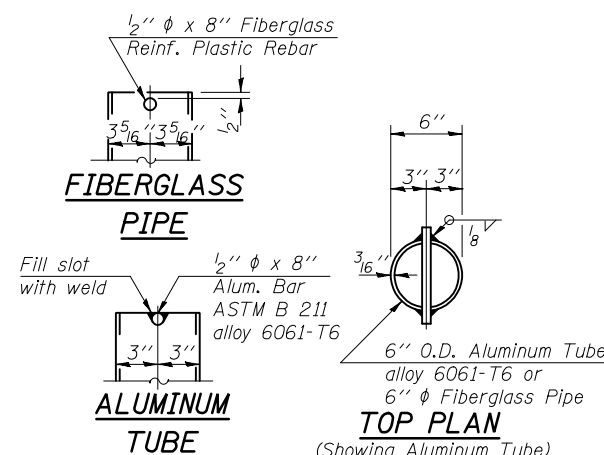
BAR v(E)

BAR s1(E)



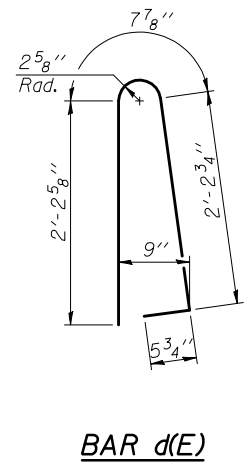
SECTION B-B
*Dimension as required by Pipe Clamp

TOP PLAN

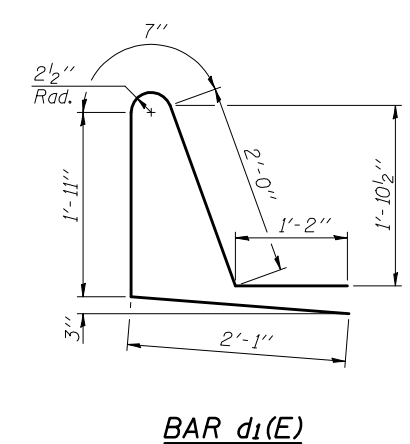


FIBERGLASS PIPE

ALUMINUM TUBE



BAR d(E)



BAR d1(E)

REVISIONS	
NAME	DATE

ILLINOIS DEPARTMENT OF TRANSPORTATION
SUPERSTRUCTURE DETAILS
IL RTE. 49 OVER LITTLE VERMILION RIVER
FAP 836 SECTION 118BR-2
CHAMPAIGN COUNTY
STA. 688+85 STR. NO. 010-0284
SCALE: VERT. _____ HORIZ. _____
DATE MAY 2008 DRAWN BY GEW CHECKED BY MJS

TUG PROJ. # 3107012-01
PLOT DATE = 8/19/2008 4:17:44 PM
FILE NAME = ...bridge\11r-ssds.cdg