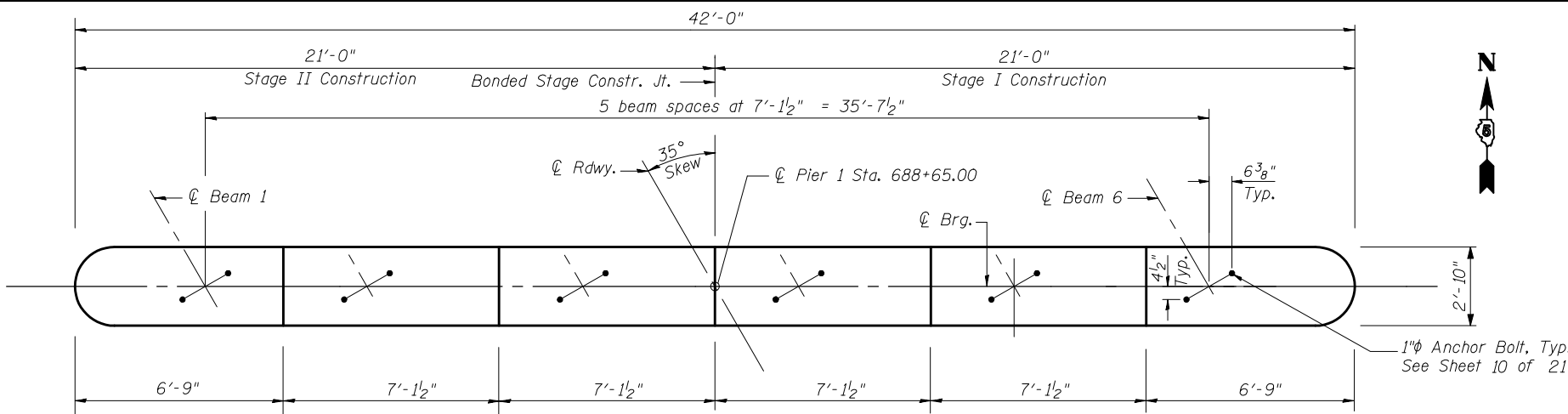
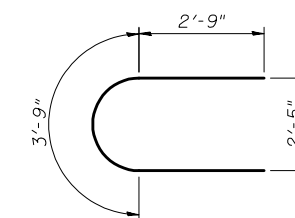


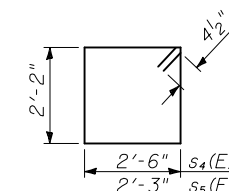
ROUTE NO.	SECTION	COUNTY	TOTAL SHEETS	SHEET NO.	SHEET NO. 14 21 SHEETS
FAP 836	118 BR-2	Champaign	45	25	
FED. ROAD DIST. NO. 5	ILLINOIS	FED. AID PROJECT-			



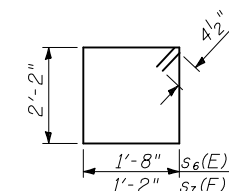
TOP PLAN



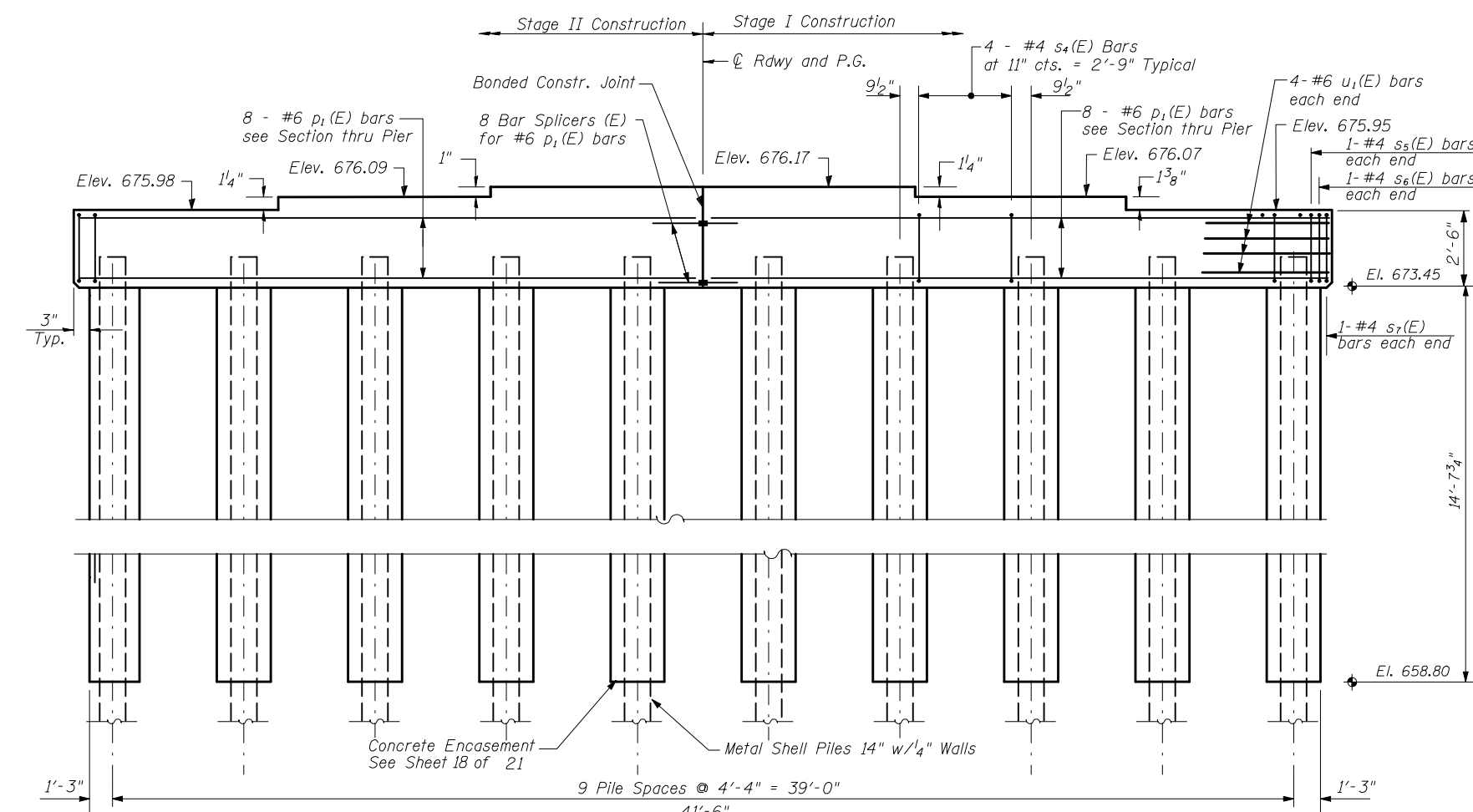
BAR u₁(E)



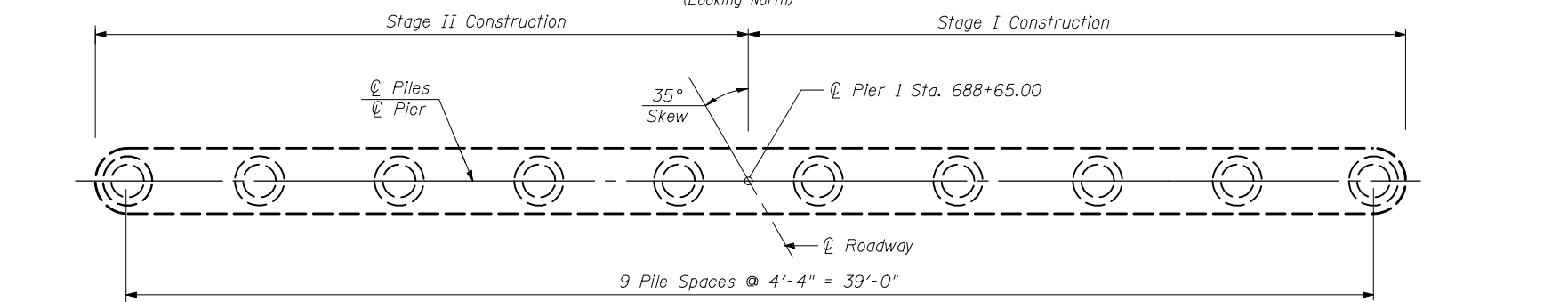
BAR s₄(E), s₅(E)



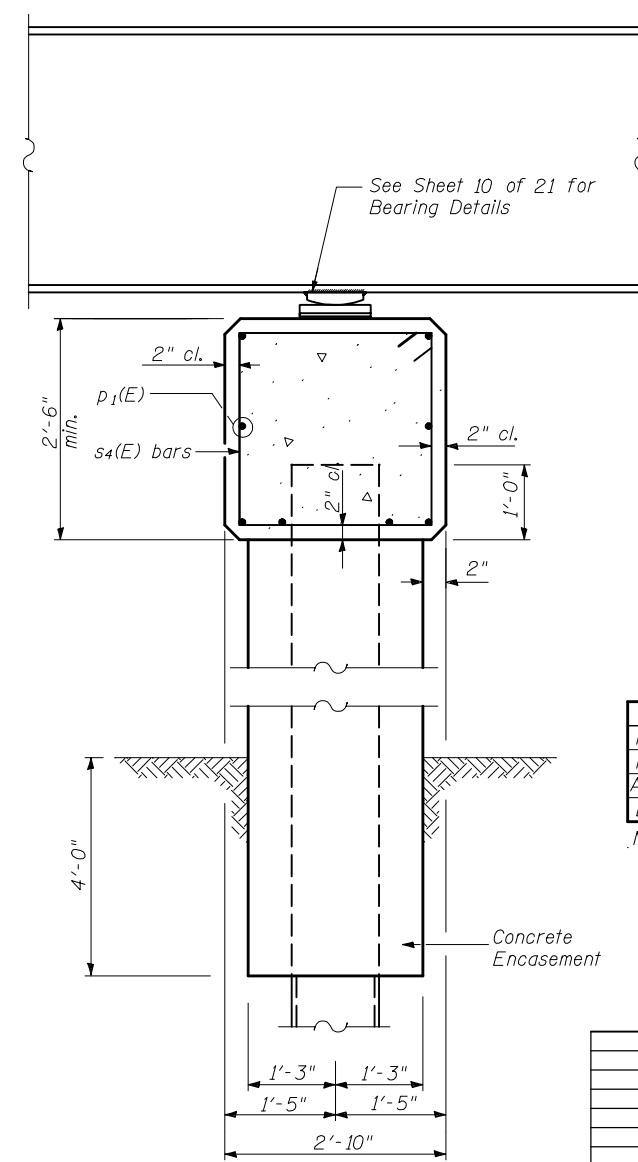
BAR s₆(E), s₇(E)



ELEVATION
(Looking North)



PILE LAYOUT



SECTION THRU PIER

BILL OF MATERIAL

PIER 1				
Bar	No.	Size	Length	Shape
p ₁ (E)	16	#6	19'-5"	—
s ₄ (E)	36	#4	10'-1"	□
s ₅ (E)	2	#4	9'-7"	□
s ₆ (E)	2	#4	8'-5"	□
s ₇ (E)	2	#4	7'-5"	□
u ₁ (E)	8	#6	9'-3"	U
Concrete Structures			Cu.Yd.	11.3
Reinforcement Bars, Epoxy Coated			Lbs.	855
Furnishing Metal Shell Piles, 14 in. x 0.250"			Ft.	387
Driving Piles			Ft.	387
Test Pile Metal Shells			Each	1
Concrete Encasement			Cu.Yd.	26.4
Underwater Structure Excavation Protection Location 1			Each	1

PILE DATA

Type & Size	Metal Shell 14 in. dia. x 0.250 in. walls
No. Required	9+1 Test Pile
Nominal Required Bearing	220 Kips
Allowable Resistance Available	110 Kips
Est. Length Pier 1	43 Ft.

Note: Do not overdrive Piles

REVISIONS	
NAME	DATE

ILLINOIS DEPARTMENT OF TRANSPORTATION
PIER 1 DETAILS
 IL RTE. 49 OVER LITTLE VERMILION RIVER
 FAP 836 SECTION 118BR-2
 CHAMPAIGN COUNTY
 STA. 688+85 STR. NO. 010-0284
 SCALE: VERT. _____ HORIZ. _____
 DATE MAY 2008 DRAWN BY GEW CHECKED BY MJS

TUG PROJ. # 3107012-01
 PLOT DATE = 8/15/2008 4:59:08 PM
 FILE NAME = ...bridge\1\br-pier1.dwg