

STATE OF ILLINOIS
DEPARTMENT OF TRANSPORTATION
DIVISION OF HIGHWAYS

**PROPOSED
HIGHWAY PLANS**

F.A.P. ROUTE 730
SECTION (8CS)TS;(62Z)TS;(62Z-2)TS
MCLEAN COUNTY
C-95-019-08

TRAFFIC SIGNAL MODERNIZATION

F.A.P. RTE.	SECTION	COUNTY	TOTAL SHEETS	SHEET NO.
730	(8CS)TS;(62Z)TS;(62Z-2)TS	MCLEAN	14	1
FED. ROAD DIST. NO.	ILLINOIS	CONTRACT NO. 70730		

★ 14+4=18

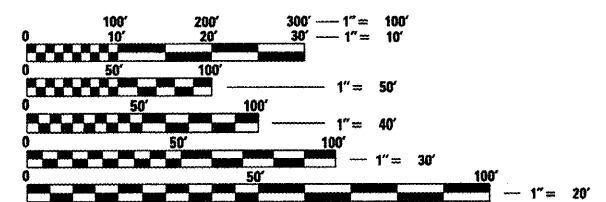
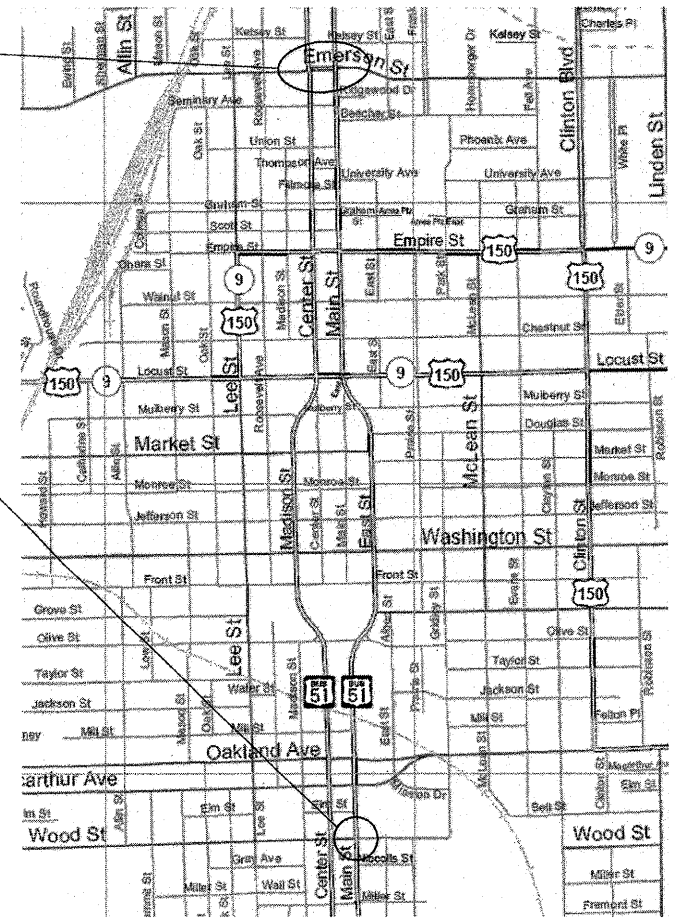
D95-019-08



FOR INDEX OF SHEETS, SEE SHEET NO. 2
FOR SUMMARY OF QUANTITIES, SEE SHEET NO. 3

F.A.P. 730 (U.S. 51 BUS.) SB (CENTER ST.)/NB (MAIN ST.)
@ EMERSON ST.

F.A.P. 730 (U.S. 51 BUS.) NB (MAIN ST.) @ WOOD ST.



FULL SIZE PLANS HAVE BEEN PREPARED USING STANDARD ENGINEERING SCALES. REDUCED SIZED PLANS WILL NOT CONFORM TO STANDARD SCALES. IN MAKING MEASUREMENTS ON REDUCED PLANS, THE ABOVE SCALES MAY BE USED.

J.U.L.I.E.
JOINT UTILITY LOCATION INFORMATION FOR EXCAVATION
1-800-892-0123
OR 811

PROJECT ENGINEER: SCOTT NEIHART
PROJECT MANAGER: ROGER BIGGS PH: 217-466-7370

CITY OF BLOOMINGTON

CONTRACT NO. 70730

STATE OF ILLINOIS
DEPARTMENT OF TRANSPORTATION
DIVISION OF HIGHWAYS

SUBMITTED 8/21 20 08
Joseph E. Grove
DEPUTY DIRECTOR OF HIGHWAYS, REGION ENGINEER

October 3, 20 08
Eric E. Harn
ENGINEER OF DESIGN AND ENVIRONMENT

October 3, 20 08
Christine M. Reed
DIRECTOR OF HIGHWAYS, CHIEF ENGINEER

PRINTED BY THE AUTHORITY
OF THE STATE OF ILLINOIS