

STATE OF ILLINOIS  
DEPARTMENT OF TRANSPORTATION  
DIVISION OF HIGHWAYS

**PROPOSED  
HIGHWAY PLANS**

FAS ROUTE 1531 (CISCO-MONTICELLO ROAD)  
SECTION D5 PATCHING 2009-3

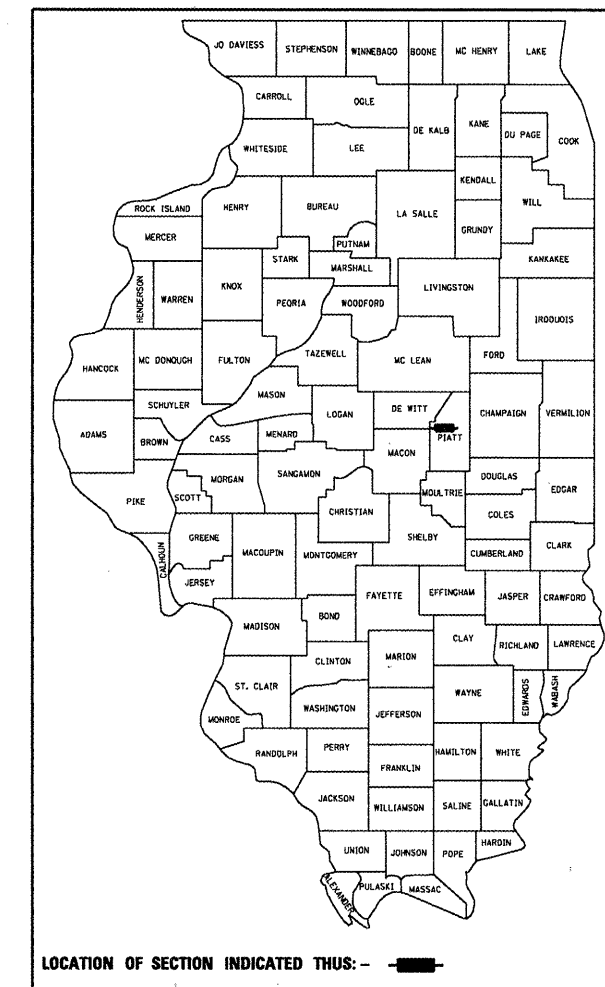
PAVEMENT PATCHING  
PIATT COUNTY

C-95-029-08

F.A.S. RTE.	SECTION	COUNTY	TOTAL SHEETS	SHEET NO.
1531	D5 PATCHING 2009-3	PIATT	6	1
FED. ROAD DIST. NO.	ILLINOIS	CONTRACT NO. 70740		

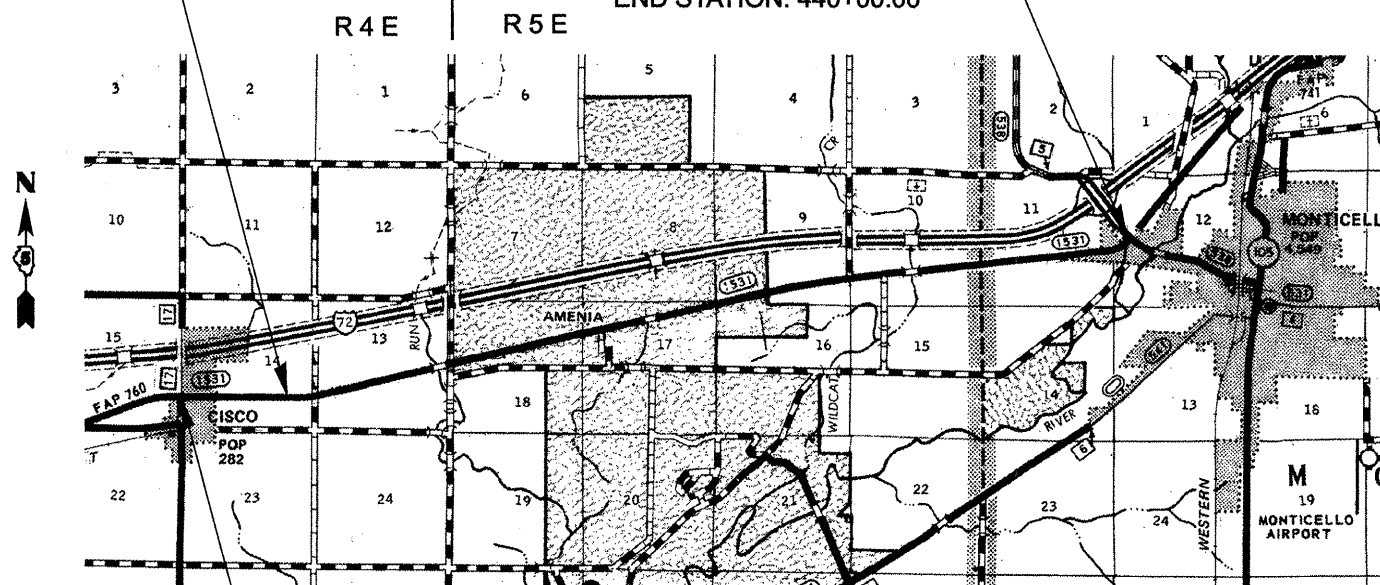
D-95-029-08

FOR INDEX OF SHEETS, SEE SHEET NO. 2  
FOR SUMMARY OF QUANTITIES, SEE SHEET NO. 3



STATION EQUATION:  
2219+00.70 BK = 117+76.80 AH

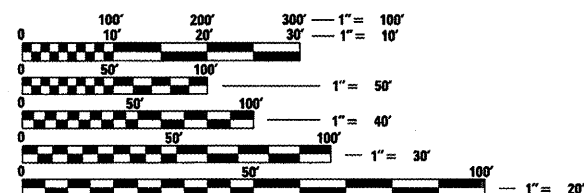
SECTION: D5 PATCHING 2009-3  
END STATION: 440+00.00



SECTION: D5 PATCHING 2009-3  
BEGIN STATION: 2158+89

GROSS LENGTH = 38,234.90 FT. = 7.241 MILE  
NET LENGTH = 38,234.90 FT. = 7.241 MILE

ADT: 1,350 (2007)  
**DESIGN DESIGNATION**  
N/A  
**FUNCTIONAL CLASSIFICATION**  
MAJOR COLLECTOR



FULL SIZE PLANS HAVE BEEN PREPARED USING STANDARD ENGINEERING SCALES. REDUCED SIZED PLANS WILL NOT CONFORM TO STANDARD SCALES. IN MAKING MEASUREMENTS ON REDUCED PLANS, THE ABOVE SCALES MAY BE USED.

J.U.L.I.E.  
JOINT UTILITY LOCATION INFORMATION FOR EXCAVATION  
1-800-892-0123  
OR 811

PROJECT ENGINEER: NANCY FASIG  
SQUAD LEADER: CORY SHEEHY  
DESIGNER: RYAN CARROLL  
PHONE: 217-465-4181  
CONTRACT NO. 70740

STATE OF ILLINOIS  
DEPARTMENT OF TRANSPORTATION  
DIVISION OF HIGHWAYS

SUBMITTED 8/19 2008

*Joseph E. Gowen*  
DEPUTY DIRECTOR OF HIGHWAYS, REGION 3 ENGINEER

October 3, 20 08  
*Eric E. Harrel*  
ENGINEER OF DESIGN AND ENVIRONMENT

October 3, 20 08  
*Christine M. Reed*  
DIRECTOR OF HIGHWAYS, CHIEF ENGINEER

**PRINTED BY THE AUTHORITY  
OF THE STATE OF ILLINOIS**