

STATE OF ILLINOIS
 DEPARTMENT OF TRANSPORTATION
 DIVISION OF HIGHWAYS

**PROPOSED
 HIGHWAY PLANS**

FAS ROUTE 1531 (CISCO-MONTICELLO ROAD)
 SECTION D5 PATCHING 2009-3

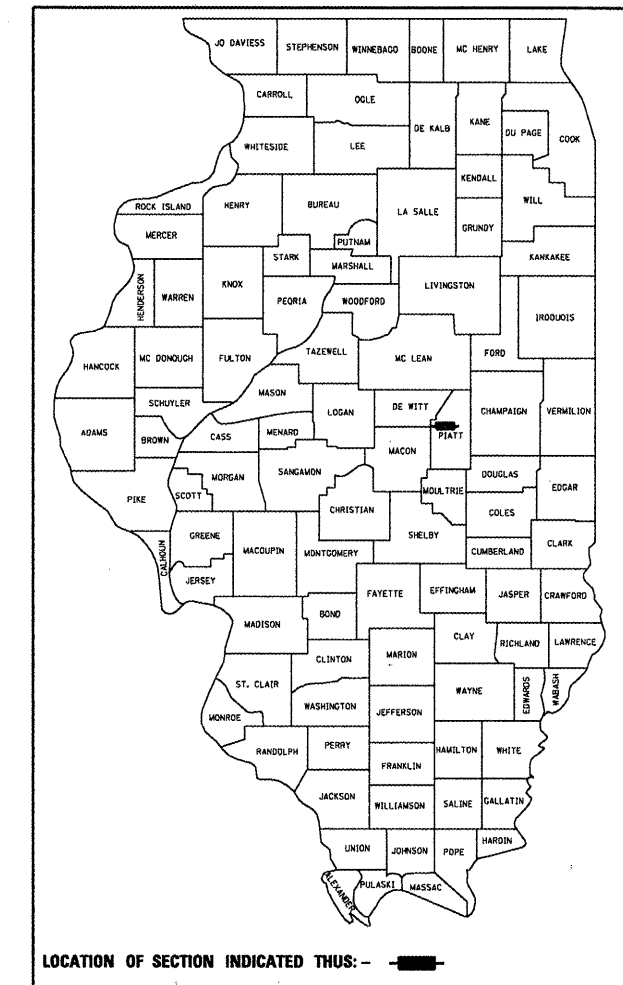
PAVEMENT PATCHING
 PIATT COUNTY

C-95-029-08

F.A.S. RTE.	SECTION	COUNTY	TOTAL SHEETS	SHEET NO.
1531	D5 PATCHING 2009-3	PIATT	6	1
FED. ROAD DIST. NO.	ILLINOIS	CONTRACT NO. 70740		

D-95-029-08

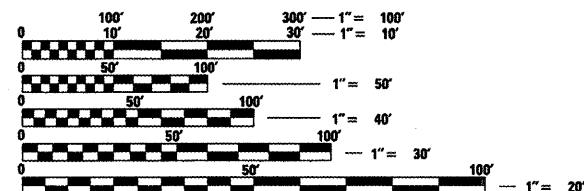
FOR INDEX OF SHEETS, SEE SHEET NO. 2
 FOR SUMMARY OF QUANTITIES, SEE SHEET NO. 3



STATION EQUATION:
 2219+00.70 BK = 117+76.80 AH

SECTION: D5 PATCHING 2009-3
 END STATION: 440+00.00

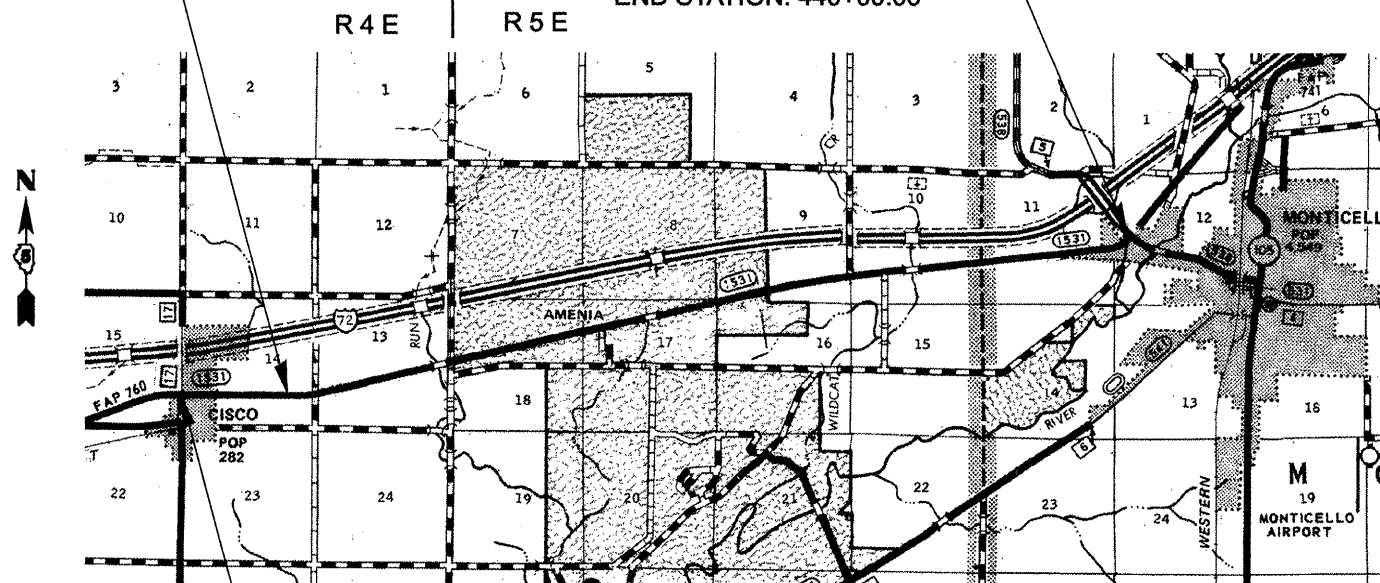
ADT: 1,350 (2007)
DESIGN DESIGNATION
 N/A
FUNCTIONAL CLASSIFICATION
 MAJOR COLLECTOR



FULL SIZE PLANS HAVE BEEN PREPARED USING STANDARD ENGINEERING SCALES. REDUCED SIZED PLANS WILL NOT CONFORM TO STANDARD SCALES. IN MAKING MEASUREMENTS ON REDUCED PLANS, THE ABOVE SCALES MAY BE USED.

J.U.L.I.E.
 JOINT UTILITY LOCATION INFORMATION FOR EXCAVATION
 1-800-892-0123
 OR 811

PROJECT ENGINEER: NANCY FASIG
 SQUAD LEADER: CORY SHEEHY
 DESIGNER: RYAN CARROLL
 PHONE: 217-465-4181
 CONTRACT NO. 70740



SECTION: D5 PATCHING 2009-3
 BEGIN STATION: 2158+89

GROSS LENGTH = 38,234.90 FT. = 7.241 MILE
 NET LENGTH = 38,234.90 FT. = 7.241 MILE

STATE OF ILLINOIS
 DEPARTMENT OF TRANSPORTATION
 DIVISION OF HIGHWAYS

SUBMITTED 8/19 2008

Joseph E. Gowen
 DEPUTY DIRECTOR OF HIGHWAYS, REGION 3 ENGINEER

October 3, 2008
Eric E. Harms
 ENGINEER OF DESIGN AND ENVIRONMENT

October 3, 2008
Christine M. Reed
 DIRECTOR OF HIGHWAYS, CHIEF ENGINEER

**PRINTED BY THE AUTHORITY
 OF THE STATE OF ILLINOIS**

INDEX OF SHEETS

SHEET NO.	DESCRIPTION
1	COVER SHEET
2	INDEX OF SHEETS & LIST OF STANDARDS
2	GENERAL NOTES
3	SUMMARY OF QUANTITIES
4	EXISTING TYPICAL CROSS SECTIONS
5	SCHEDULE OF QUANTITIES
6	TYPICAL APPLICATIONS OF PAVEMENT MARKINGS AND MARKERS

LIST OF STANDARDS

STANDARD NO.	DESCRIPTION
000001-05	STANDARD SYMBOLS, ABBREVIATIONS AND PATTERNS
001001-01	AREAS OF REINFORCEMENT BARS
001006	DECIMAL OF AN INCH AND OF A FOOT
420001-07	PAVEMENT JOINTS
420701-02	PAVEMENT FABRIC
442101-07	CLASS B PATCHES
701001-01	OFF-ROAD OPERATIONS, 2L, 2W, MORE THAN 4.5 (15') AWAY
701006-02	OFF-ROAD OPERATIONS, 2L, 2W, 4.5 M (15') TO 600 MM (24") FROM PAVEMENT EDGE
701201-02	LANE CLOSURE, 2L, 2W, DAY ONLY, FOR SPEEDS >= 45 M.P.H.
701311-02	LANE CLOSURE 2L, 2W MOVING OPERATIONS-DAY ONLY
701336-04	LANE CLOSURE, 2L, 2W, WORK AREAS IN SERIES FOR SPEEDS >= 45 MPH
701901	TRAFFIC CONTROL DEVICES
780001-01	TYPICAL PAVEMENT MARKINGS

GENERAL NOTES

G.N.-100

ENGLISH UNITS OF MEASUREMENT SHALL GOVERN OVER AND SUPERSEDE ANY METRIC UNITS SHOWN IN THIS CONTRACT. WHERE INCLUDED, METRIC UNITS ARE FOR INFORMATION ONLY.

G.N.-442B – PATCHING SCHEDULES

THE PATCHING SCHEDULES INCLUDED IN THE PLANS REPRESENT THE BEST INFORMATION AVAILABLE AT THE TIME OF COMPLETION OF THE PLANS FOR LETTING. VARIATIONS IN LOCATION AND SIZES OF BOTH FULL-DEPTH AND PARTIAL-DEPTH PATCHES MAY OCCUR.

G.N.-1004.01

COARSE AGGREGATE GRADATION CA-10 MAY BE USED WHENEVER COARSE AGGREGATE CA-6 IS SPECIFIED IN THE STANDARD SPECIFICATIONS.

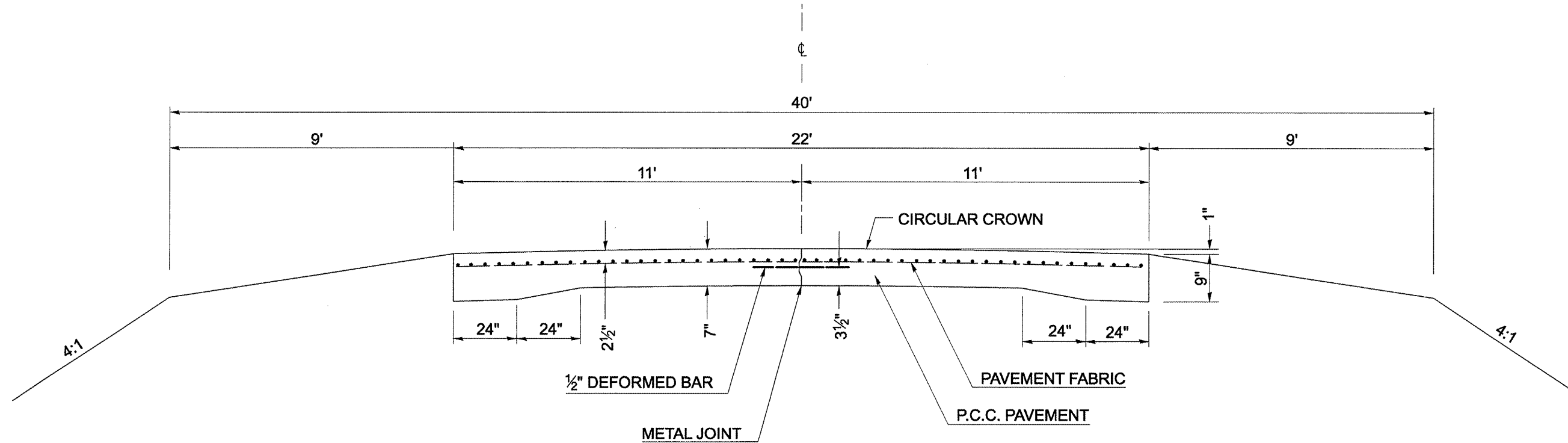
COMMITMENTS

NO COMMITMENTS FOR THIS CONTRACT.

FILE NAME = c:\projects\570740\70740.pln.dgn	USER NAME = carrollr	DESIGNED -	REVISED -	STATE OF ILLINOIS DEPARTMENT OF TRANSPORTATION	INDEX OF SHEETS, LIST OF STANDARDS, AND GENERAL NOTES	F.A.S. RTE. 1531	SECTION D5 PATCHING 2009-3	COUNTY PIATT	TOTAL SHEETS 6	SHEET NO. 2	
PLOT SCALE = 40.0000' / IN.	CHECKED -	REVISED -	SCALE:			SHEET NO. OF SHEETS	STA. TO STA.	FED. ROAD DIST. NO. [ILLINOIS] FED. AID PROJECT			
PLOT DATE = 8/15/2008	DATE -	REVISED -	CONTRACT NO. 70740								

EXISTING ROADWAY TYPICAL CROSS SECTION

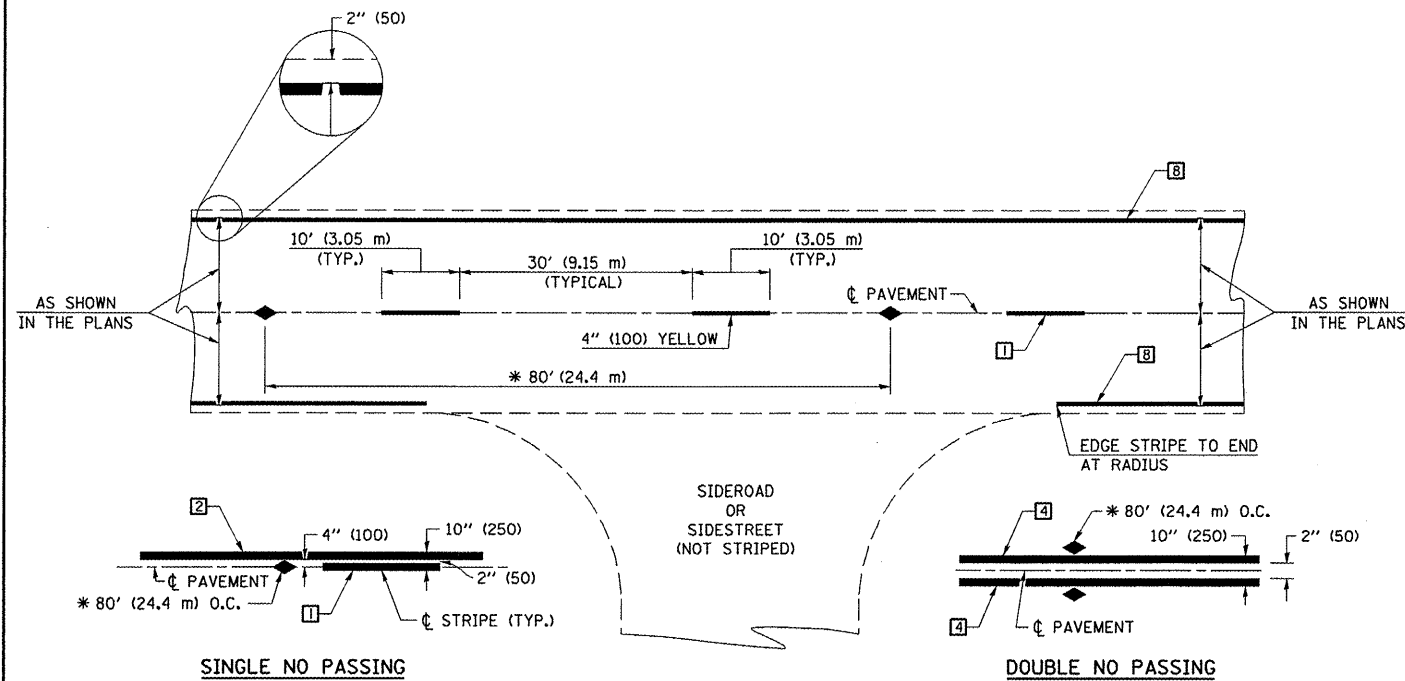
FAS 1531 (OLD IL 47)
 STA. 2158+89.00 TO STA. 440+00.00
 STATION EQUATION:
 2219+00.70 BK = 117+76.80 AH



FILE NAME = c:\projects\4578740\70740.plan.dgn	USER NAME = carrollrt	DESIGNED -	REVISED -	STATE OF ILLINOIS DEPARTMENT OF TRANSPORTATION	EXISTING TYPICAL CROSS SECTION	F.A.S. RTE. 1531	SECTION D5 PATCHING 2009-3	COUNTY PIATT	TOTAL SHEETS 6	SHEET NO. 4
	PLOT SCALE = 40,0000' / IN.	DRAWN -	REVISED -		SCALE:	SHEET NO.	OF	SHEETS	STA.	TO STA.
	PLOT DATE = 8/15/2008	CHECKED -	REVISED -							
		DATE -	REVISED -							
						CONTRACT NO. 70740				
						FED. ROAD DIST. NO. [ILLINOIS] FED. AID PROJECT				

SCHEDULE OF QUANTITIES

STATION	DIR.	LENGTH	WIDTH	PATCH AREA			DOWEL BARS	SAW CUTS	TIE BARS	PAVEMENT FABRIC	CENTER	EDGE
				TYPE II	TYPE III	TYPE IV					SKIP	LINE
				9.0"	9.0"	9.0"					DASH	STRIPE
		(FOOT)	(FOOT)	44200956	44200962	44200964	Z0017100	44213200	Z0075300	44213100	78001110	
				(SQ YD)	(SQ YD)	(SQ YD)	(EACH)	(FOOT)	(EACH)	(SQ YD)	FOOT	
2172+40.00	EB	15	11	0.0	18.3	0.0	18	48.0	0	18.3	3.8	15.0
2172+40.00	WB	10	11	12.2	0.0	0.0	18	43.0	0	0.0		10.0
2175+00.00	WB	25	11	0.0	0.0	30.6	18	58.0	13	30.6	6.3	25.0
2181+22.00	WB	25	11	0.0	0.0	30.6	18	58.0	13	30.6	6.3	25.0
2186+14.00	EB	15	11	0.0	18.3	0.0	18	48.0	0	18.3	3.8	15.0
2208+00.00	WB	20	11	0.0	24.4	0.0	18	53.0	10	24.4	5.0	20.0
2210+80.00	EB	20	11	0.0	24.4	0.0	18	53.0	10	24.4	5.0	20.0
2210+80.00	WB	20	11	0.0	24.4	0.0	18	53.0	10	24.4		20.0
2211+00.00	EB	30	11	0.0	0.0	36.7	18	63.0	15	36.7	7.5	30.0
2211+00.00	WB	10	11	12.2	0.0	0.0	18	43.0	0	0.0		10.0
120+48.00	EB	30	11	0.0	0.0	36.7	18	63.0	15	36.7	7.5	30.0
120+48.00	WB	30	11	0.0	0.0	36.7	18	63.0	15	36.7		30.0
121+60.00	EB	35	11	0.0	0.0	42.8	18	68.0	18	42.8	8.8	35.0
121+60.00	WB	35	11	0.0	0.0	42.8	18	68.0	18	42.8		35.0
134+81.00	EB	10	11	12.2	0.0	0.0	18	43.0	0	0.0	2.5	10.0
146+50.00	WB	25	11	0.0	0.0	30.6	18	58.0	13	30.6	6.3	25.0
200+24.00	EB	35	11	0.0	0.0	42.8	18	68.0	18	42.8		35.0
200+24.00	WB	35	11	0.0	0.0	42.8	18	68.0	18	42.8	8.8	35.0
262+55.00	WB	15	11	0.0	18.3	0.0	18	48.0	0	18.3	3.8	15.0
302+60.00	EB	20	11	0.0	24.4	0.0	18	53.0	10	24.4	5.0	20.0
316+10.00	EB	30	11	0.0	0.0	36.7	18	63.0	15	36.7	7.5	30.0
316+10.00	WB	30	11	0.0	0.0	36.7	18	63.0	15	36.7		30.0
343+36.00	EB	30	11	0.0	0.0	36.7	18	63.0	15	36.7	7.5	30.0
343+36.00	WB	40	11	0.0	0.0	48.9	18	73.0	20	48.9		40.0
352+62.00	EB	15	11	0.0	18.3	0.0	18	48.0	0	18.3	3.8	15.0
352+62.00	WB	15	11	0.0	18.3	0.0	18	48.0	0	18.3		15.0
352+91.00	EB	8	11	9.8	0.0	0.0	18	41.0	0	0.0	2.0	8.0
352+91.00	WB	8	11	9.8	0.0	0.0	18	41.0	0	0.0		8.0
354+48.00	EB	12	11	14.7	0.0	0.0	18	45.0	0	0.0	3.0	12.0
362+41.00	EB	8	11	9.8	0.0	0.0	18	41.0	0	0.0	2.0	8.0
367+47.00	EB	20	11	0.0	24.4	0.0	18	53.0	10	24.4	5.0	20.0
367+47.00	WB	20	11	0.0	24.4	0.0	18	53.0	10	24.4		20.0
376+53.00	EB	30	11	0.0	0.0	36.7	18	63.0	15	36.7	7.5	30.0
376+53.00	WB	30	11	0.0	0.0	36.7	18	63.0	15	36.7		30.0
411+09.00	EB	8	11	9.8	0.0	0.0	18	41.0	0	0.0	2.0	8.0
411+09.00	WB	6	11	7.3	0.0	0.0	18	39.0	0	0.0		6.0
FINAL TOTAL =				97.8	238.3	605.0	648.0	1958.0	311.0	843.3	120.3	770.0
USE =				98.0	239.0	605.0	648.0	1958.0	311.0	844.0	121.0	770.0



* REDUCE TO 40' (12.2 m) O.C. ON CURVES WITH POSTED OR ADVISORY SPEEDS OF 45 mph (70 km/h) OR LESS.

TWO LANE/TWO WAY

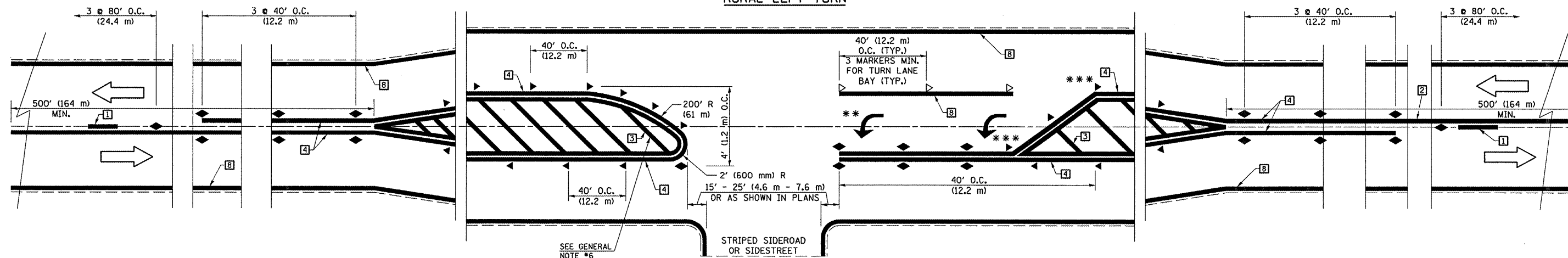
TYPICAL PAVEMENT MARKING LEGEND

- 1 4" (100) SKIP-DASH (YELLOW)
- 2 4" (100) SOLID (YELLOW)
- 3 12" (300) DIAGONAL (YELLOW)
- 4 4" (100) DOUBLE YELLOW (NARROW)
- 5 RESERVED
- 6 RESERVED
- 7 4" (100) SKIP-DASH (WHITE)
- 8 4" (100) SOLID (WHITE)
- 9 12" (300) DIAGONAL (WHITE)
- 10 6" (150) SOLID (WHITE)
- 11 24" (600) STOP BAR (WHITE)
- 12 8" (200) SOLID (WHITE)
- 13 4" (100) LANE LINE EXTENSIONS (WHITE)
- 14 4" (100) PARKING WHITE

TYPICAL PAVEMENT MARKERS LEGEND

- ◆ TWO-WAY AMBER MARKER
- ▶ ONE-WAY AMBER MARKER
- ▷ ONE-WAY CRYSTAL MARKER

RURAL LEFT TURN



*** REDUCE SPACING IF NECESSARY TO ASSURE MARKERS AT CORNER POINTS.

** TURN ARROWS SHALL BE PLACED AS SHOWN ON SHEET #2.

Note: All dimensions are in INCHES (millimeters) unless otherwise shown.

FILE NAME = c:\projects\d570740\70740_plan.dgn	USER NAME = carrollrt	DESIGNED -	REVISED - 11/06
		DRAWN -	REVISED -
		CHECKED -	REVISED -
		DATE -	REVISED -

**STATE OF ILLINOIS
DEPARTMENT OF TRANSPORTATION**

**PAVEMENT MARKING AND MARKERS
(RURAL & URBAN APPLICATIONS)**

SCALE: SHEET NO. 1 OF 4 SHEETS STA. TO STA.

DISTRICT 5 DETAIL NO. 7800AAAA				
F.A.S. RTE.	SECTION	COUNTY	TOTAL SHEETS	SHEET NO.
1531	D5 PATCHING 2009-3	PIATT	6	6
FED. ROAD DIST. NO. ILLINOIS FED. AID PROJECT			CONTRACT NO. 70740	