

STATE OF ILLINOIS
DEPARTMENT OF TRANSPORTATION
DIVISION OF HIGHWAYS

PROPOSED HIGHWAY PLANS

FAP ROUTE 315 (US 136)
SECTION (116)I-4
PROJECT: ACBRF-0315(054)
LOGAN COUNTY
C-96-513-08

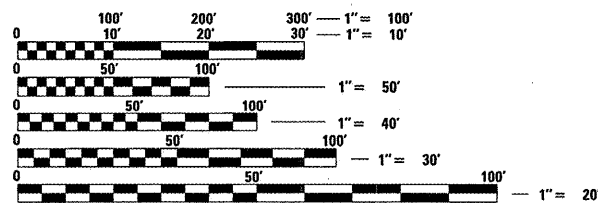
F.A.P. RTE.:	SECTION	COUNTY	TOTAL SHEETS	SHEET NO.
315	(116)I-4	LOGAN	20	1
FED. ROAD DIST. NO.	ILLINOIS	CONTRACT NO. 72A99		

INDEX OF SHEETS

1	TITLE SHEET
2	GENERAL NOTES & MIXTURE REQUIREMENTS
3	SUMMARY OF QUANTITIES
4 - 5	DETAILS & TYPICAL ROADWAY SECTIONS
6	SCHEDULE OF QUANTITIES
7	PLAN
8	PROFILE
9	EROSION CONTROL PLAN
10 - 13	STORM WATER POLLUTION PREVENTION PLAN
14	SUBSTRUCTURE REMOVAL DETAILS
15 - 16	ROAD CLOSURE SIGN PLACEMENT PLAN
17 - 20	CROSS SECTIONS
	STANDARDS

LIST OF ILLINOIS DOT HIGHWAY STANDARDS

000001-05	701001-01
001001-01	701006-02
001006	701011-01
280001-04	701501-04
482001-02	701901
482011-03	780001-01
542201-01	781001-02
666001	BLR 21-7

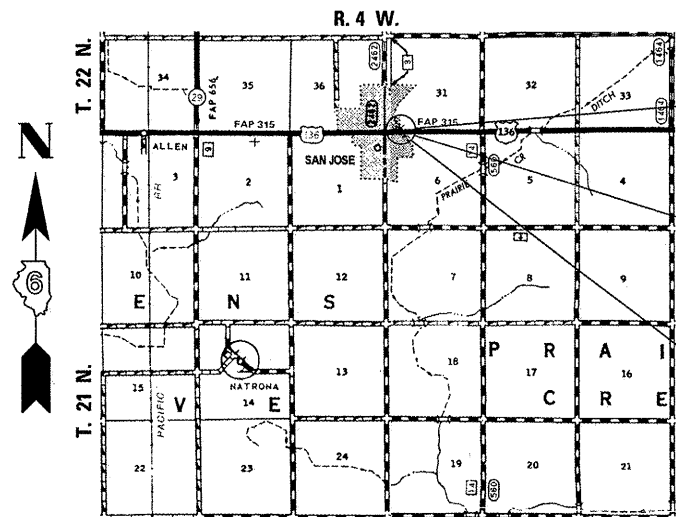


FULL SIZE PLANS HAVE BEEN PREPARED USING STANDARD ENGINEERING SCALES. REDUCED SIZED PLANS WILL NOT CONFORM TO STANDARD SCALES. IN MAKING MEASUREMENTS ON REDUCED PLANS, THE ABOVE SCALES MAY BE USED.

J.U.L.I.E.
JOINT UTILITY LOCATION INFORMATION FOR EXCAVATION
1-800-892-0123
OR 811

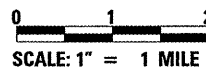
PROJECT ENGINEER: JOHN NEGANGARD (217)-782-6990
SQUAD LEADER: VICTOR YOUNG (217)-557-7897

CONTRACT NO. 72A99



LOCATION MAP

NET LENGTH OF PROJECT = 350 FEET = 0.066 MILES



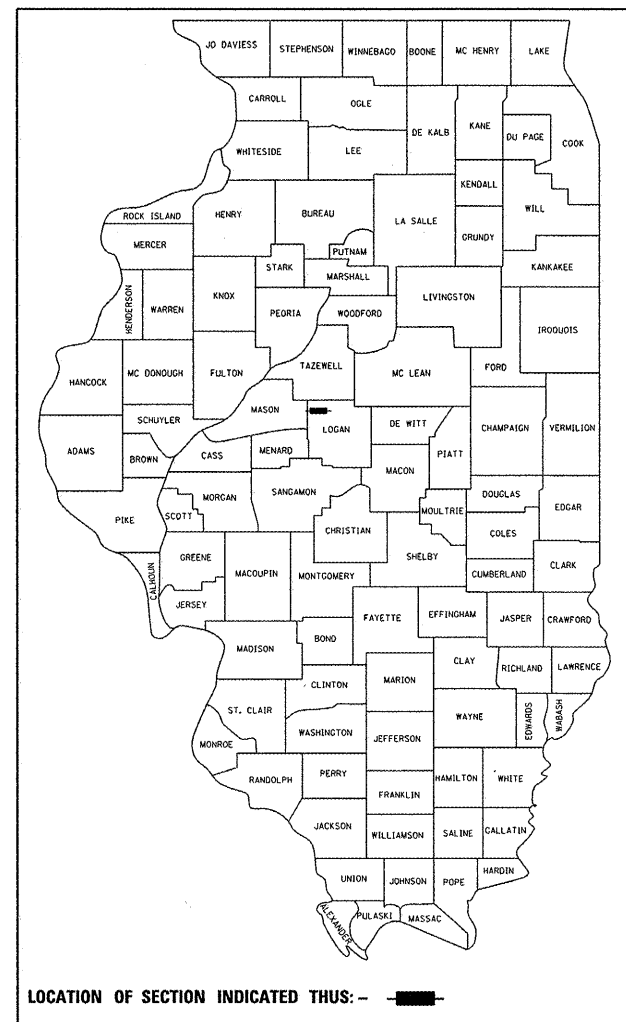
SCALE: 1" = 1 MILE

PROPOSED PROJECT BEGINS
-STA. 11 + 50

SECTION (116)I-4
REMOVE EXISTING THREE SPAN PRECAST
PRESTRESSED CONCRETE DECK BEAM BRIDGE,
STA. 13 + 19.00, S.N. 054-0023, AND REPLACE
WITH 36" DIA. PIPE CULVERT AND EMBANKMENT.

PROPOSED PROJECT ENDS
-STA. 15 + 00

D-96-527-07



LOCATION OF SECTION INDICATED THUS: -

ADT = 2650 (2005)
% SU = 10.4 (2005)
% MU = 10.4 (2005)
TOWNSHIP: PRAIRIE CREEK
FUNCTIONAL CLASSIFICATION: OTHER PRINCIPAL ARTERIAL

STATE OF ILLINOIS
DEPARTMENT OF TRANSPORTATION
DIVISION OF HIGHWAYS


SUBMITTED Aug 13 2008
Ray Z. Dush
DEPUTY DIRECTOR OF HIGHWAYS, REGION FOUR ENGINEER

October 3, 2008
Eric E. Horn
Interim ENGINEER OF DESIGN AND ENVIRONMENT

October 3, 2008
Christine M. Reed
DIRECTOR OF HIGHWAYS, CHIEF ENGINEER



Richard K. Allender III 08-11-2008
EXPIRATION: 11/30/2009

 Allen Henderson & Associates, Inc.
Civil and Structural Engineers Springfield, IL.
62703 Phone: (217)544-8033 IL Design Firm
No. 184-001907

PRINTED BY THE AUTHORITY
OF THE STATE OF ILLINOIS