

SECTION 31 T.21N. R.4W. 3rd P.M.

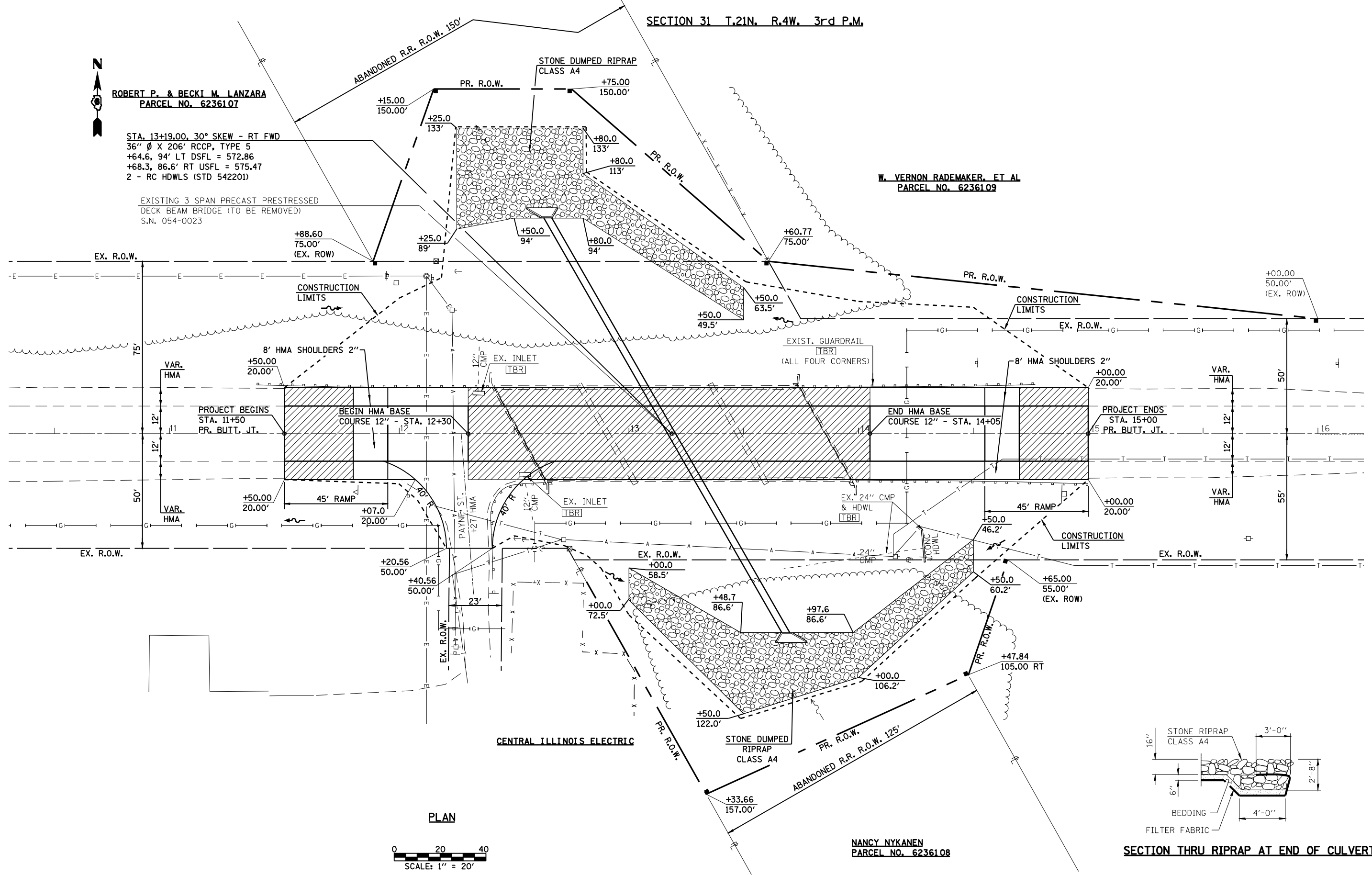


ROBERT P. & BECKI M. LANZARA
PARCEL NO. 6236107

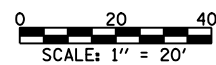
STA. 13+19.00, 30° SKEW - RT FWD
36" Ø X 206' RCCP, TYPE 5
+64.6, 94' LT DSFL = 572.86
+68.3, 86.6' RT USFL = 575.47
2 - RC HDWLS (STD 542201)

EXISTING 3 SPAN PRECAST PRESTRESSED
DECK BEAM BRIDGE (TO BE REMOVED)
S.N. 054-0023

W. VERNON RADEMAKER, ET AL
PARCEL NO. 6236109

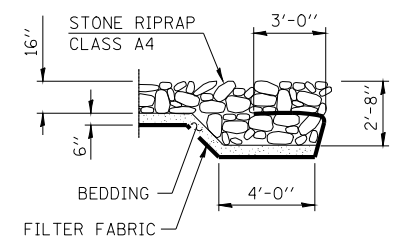


PLAN



CENTRAL ILLINOIS ELECTRIC

NANCY NYKANEN
PARCEL NO. 6236108



SECTION THRU RIPRAP AT END OF CULVERT

SECTION 6 T.21N. R.4W. 3rd P.M.

FILE NAME =
D672A99-PLAN.dgn

USER NAME = laughlin1
DRAWN -
CHECKED -
DATE -

DESIGNED -
DRAWN -
CHECKED -
DATE -

REVISED -
REVISED -
REVISED -
REVISED -



Allen Henderson & Associates, Inc.
Civil and Structural Engineers Springfield, IL
62708 Phone: (217)544-8033 IL Design Firm
No. 184-001907

SCALE: SHEET NO. OF SHEETS STA. TO STA.

F.A.P. RTE.	SECTION	COUNTY	TOTAL SHEETS	SHEET NO.
315	(116)I-4	LOGAN	20	7
CONTRACT NO. 72A99				
FED. ROAD DIST. NO. ILLINOIS FED. AID PROJECT				