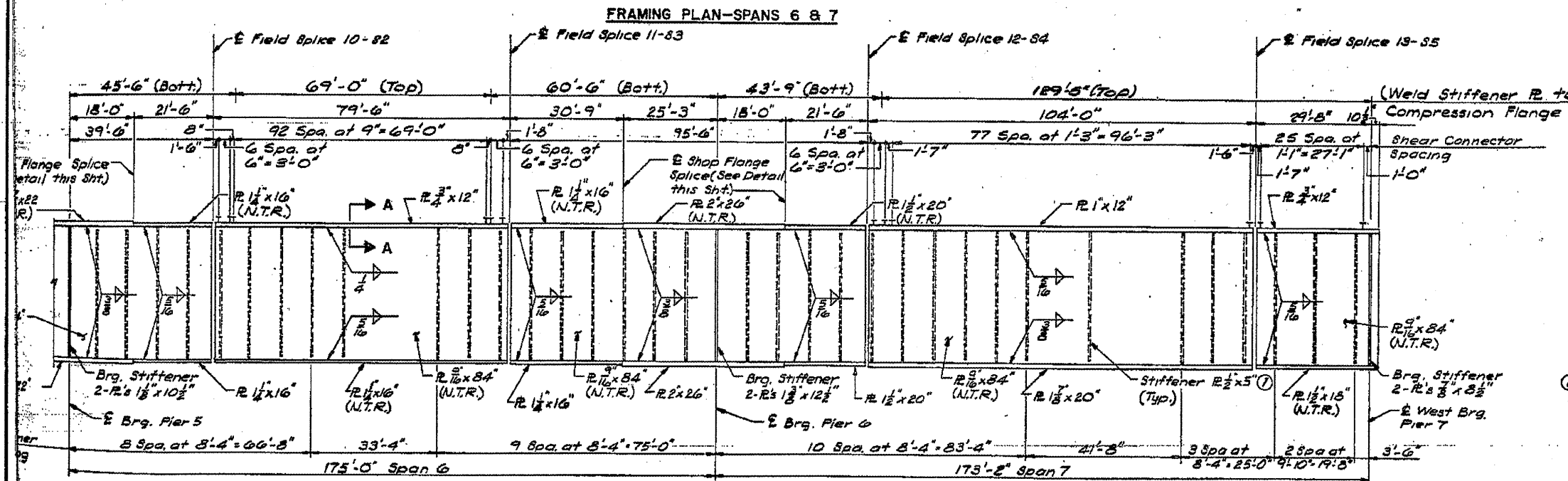
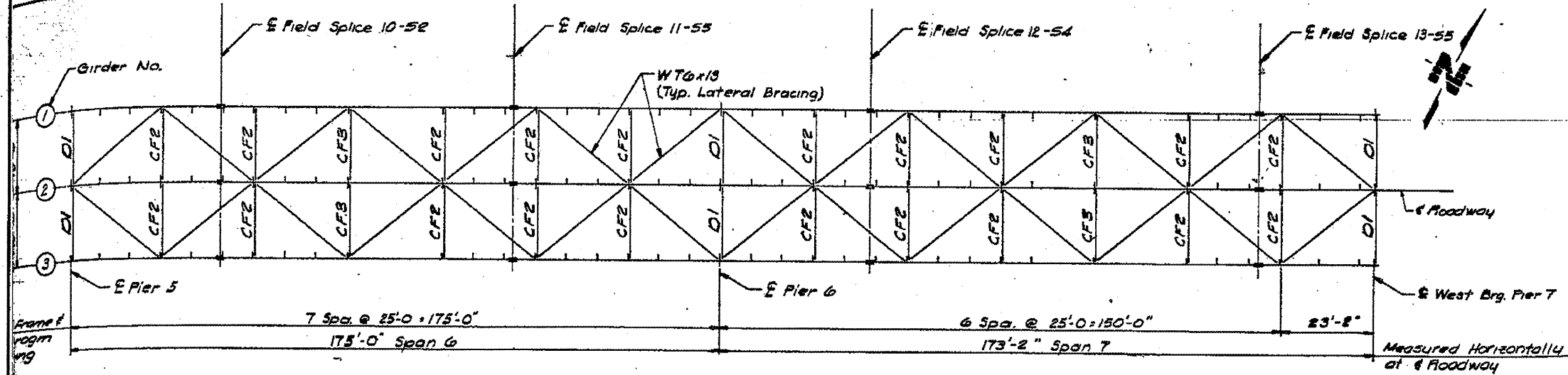
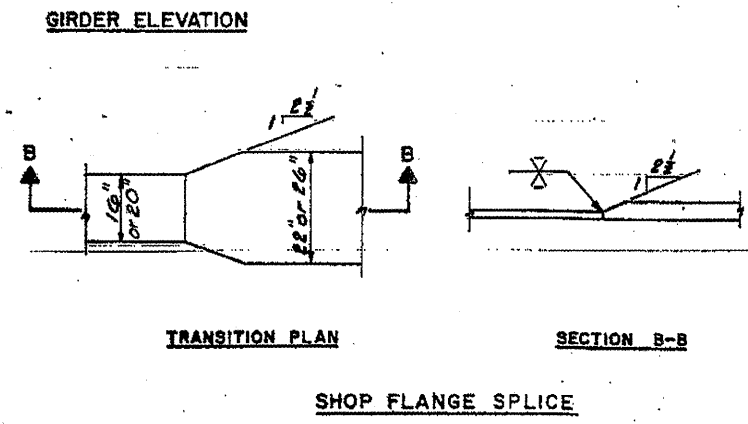


ROUTE NO.	SECTION	COUNTY	TOTAL SHEETS	SHEET NO.	SHEET NO.
S.B.I.	1-2B-1-1	MARION MISSOURI	79	64	75 SHEETS
F.A.					
FED. ROAD DIST. NO. 7	ILLINOIS	FED. AID PROJECT BR-F-63()			



NOTES:
 ① Intermediate Stiffeners shall be located on the inside face of Girders ① and ③ and on either face of Girder ②. Plates designated by (N.T.R.) shall conform to the Supplemental Requirements for Notch Toughness (Zone 2). These components are the Tension Flanges, Webs, and all Splice Plate material of the Steel Girder.
 *Weld Cross Frame Connection and Bearing Stiffener R's to top and/or bottom flange as detailed on Sheet 02.
 For Section A-A see Sheet 5B.
 For stiffener clearance at flange splice, see Detail B on Sheet 5B.



REV. NO.	DRAWN	CHKD.	APPD.	DESCRIPTION
F A ROUTE 63 (U. S. ROUTE 24) OVER MISSISSIPPI RIVER QUINCY, ILLINOIS				
WEST APPROACH - STEEL ALTERNATE FRAMING PLAN AND GIRDER ELEVATION				
SPANS 6 & 7				

EXISTING STEEL PLANS
FOR INFORMATION ONLY