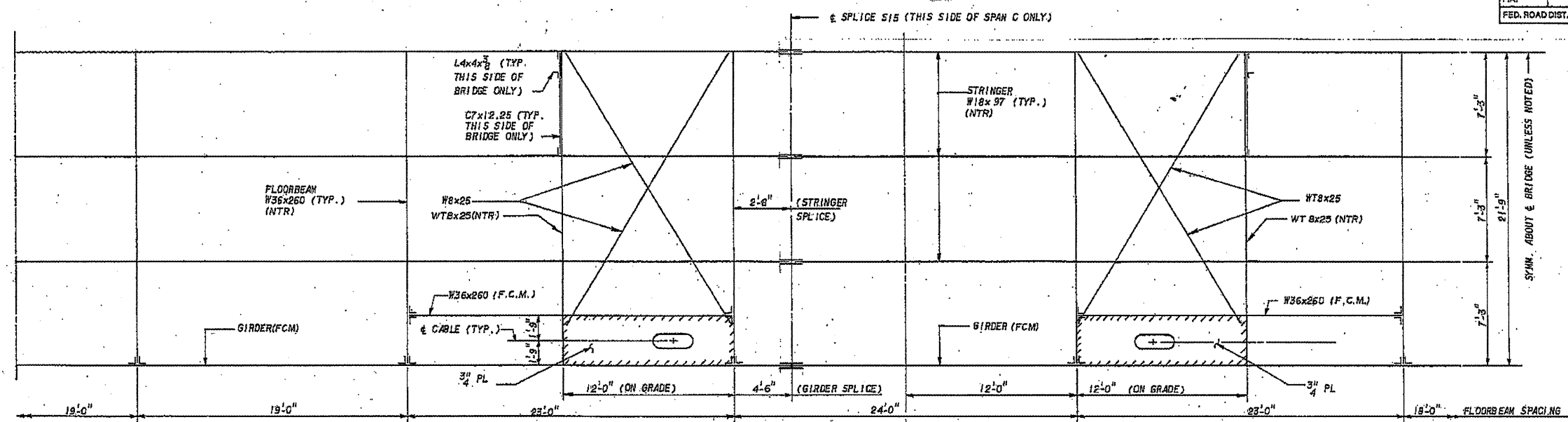
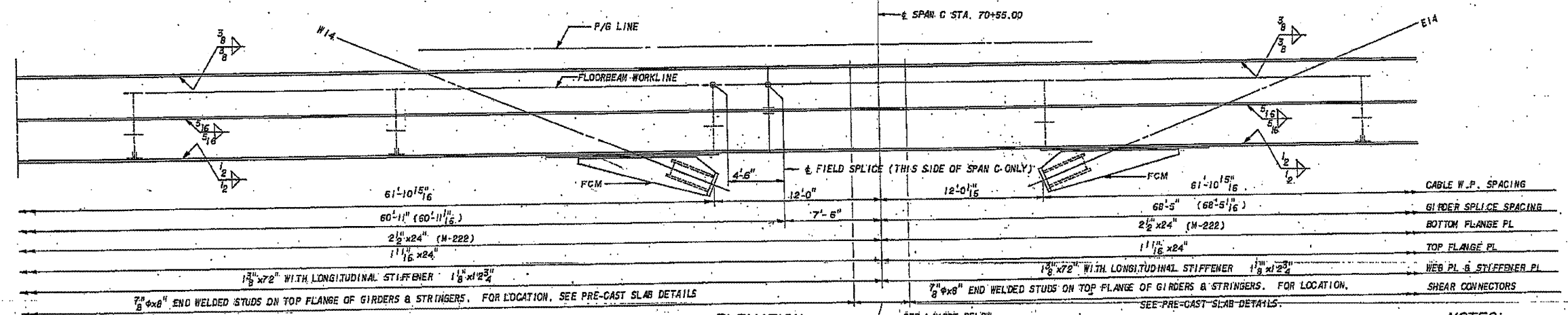


ROUTE NO.	SECTION	COUNTY	TOTAL SHEETS	SHEET NO.	SHEET NO. 568
S.B.I. 63	1-2B1-2(2)	ADAMS	339	262	SHEETS 125
F.A.		ILLINOIS	FED. AID PROJECT BR-F-65()		



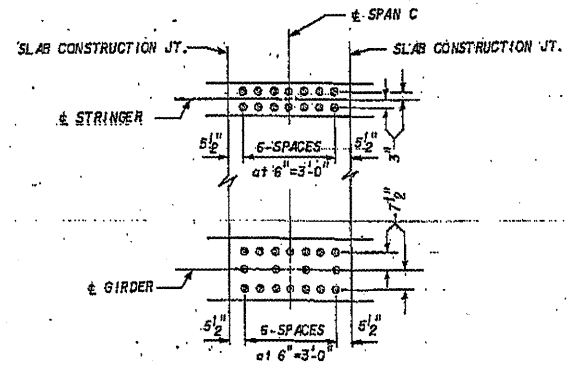
FRAMING PLAN



ELEVATION

NOTES:

- DENOTES STRINGER SPLICE
- DENOTES GIRDER SPLICE
- ALL DIMENSIONS SHOWN ARE HORIZONTAL, UNLESS NOTED.
- ALL INFORMATION IS SYMMETRICAL ABOUT & SPAN C, UNLESS SHOWN OTHERWISE.
- (68'-5 1/16) DENOTES CAMBER LENGTH.



SHEAR CONNECTOR LAYOUT FOR CAST-IN-PLACE SLAB AT & SPAN C

FOR DETAILS REFER TO:
STEEL PROF BRIDGE & IRON CO. DES.

STEEL ALTERNATIVE			
REV. NO.	DRAWN	CHKD.	APPD.
	HE	CONSTRUCTED IN ESSENTIAL COMPLIANCE 7/87	
			DESCRIPTION
			DATE
F A ROUTE 63 (U.S. ROUTE 24) OVER MISSISSIPPI RIVER QUINCY, ILLINOIS			
GIRDER ELEVATIONS AND FRAMING PLAN - 8			

PREPARED BY
MODJESKI AND MASTERS
CONSULTING ENGINEERS
FOR
Booker
Engineers Architects Planners
1139 Olive Street, St. Louis, Missouri 63101

DRAWN: SLH
CHKD.: LKH
APPD.: HEW
DATE: MAY, 1983

EXISTING STEEL PLANS FOR INFORMATION ONLY