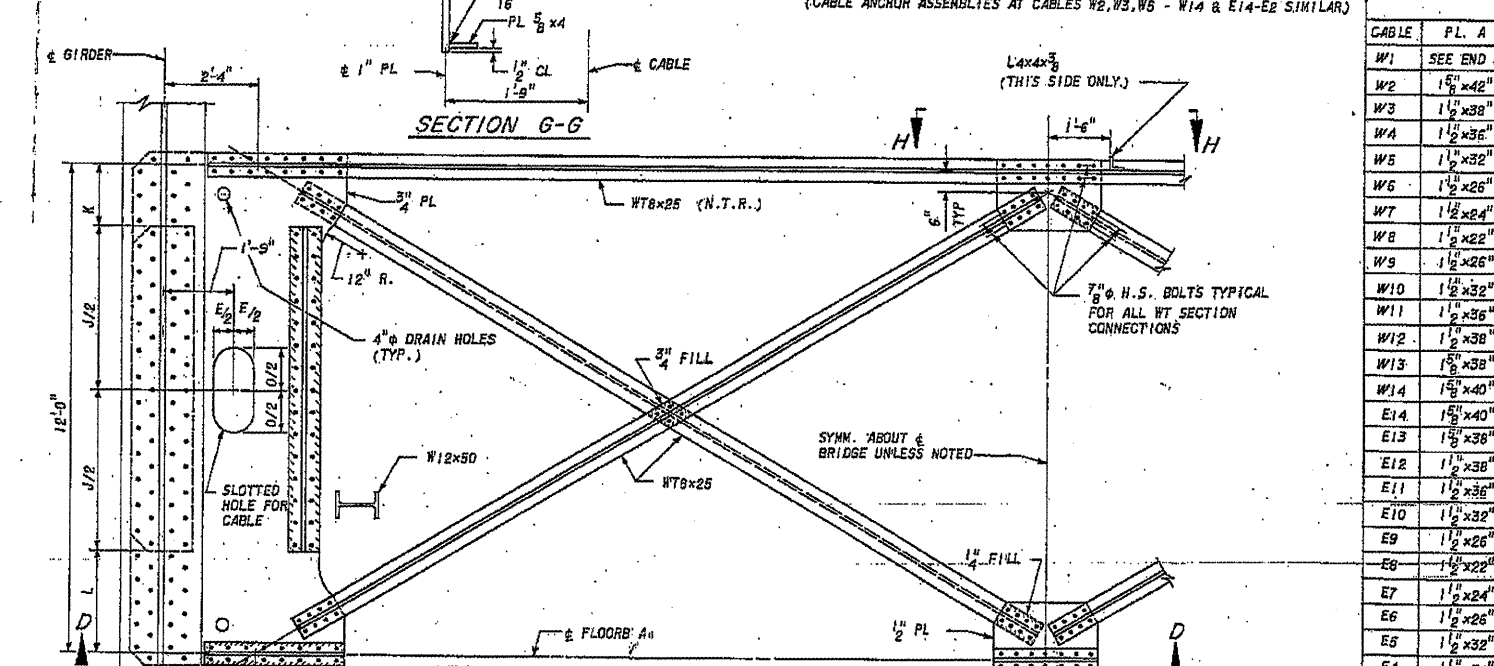
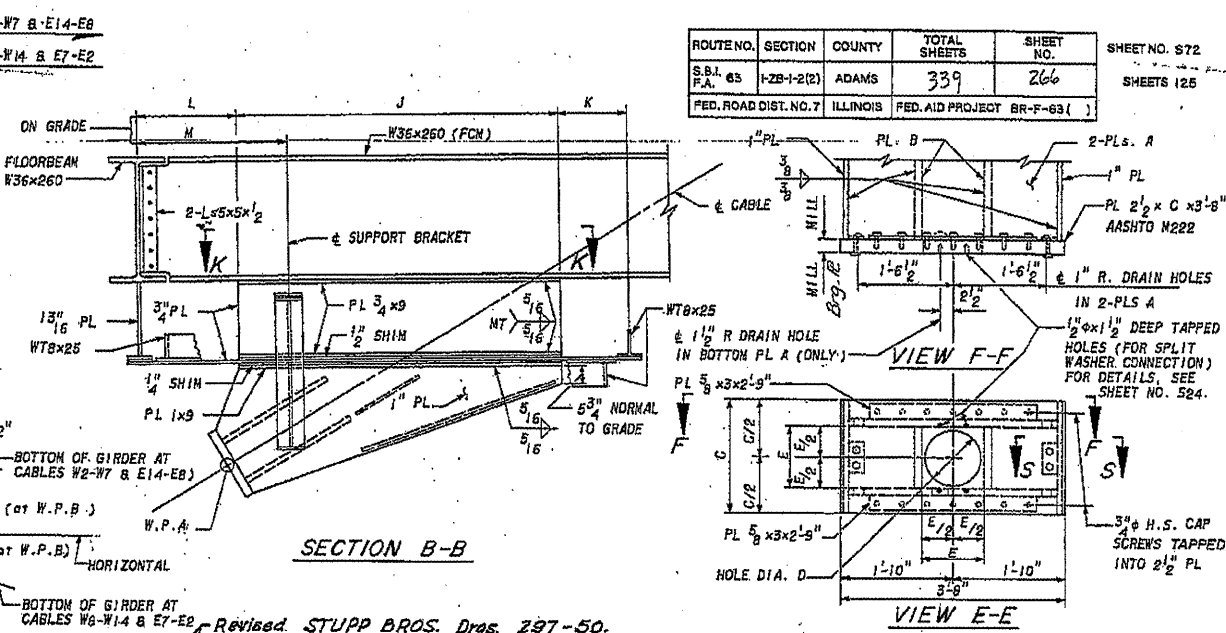
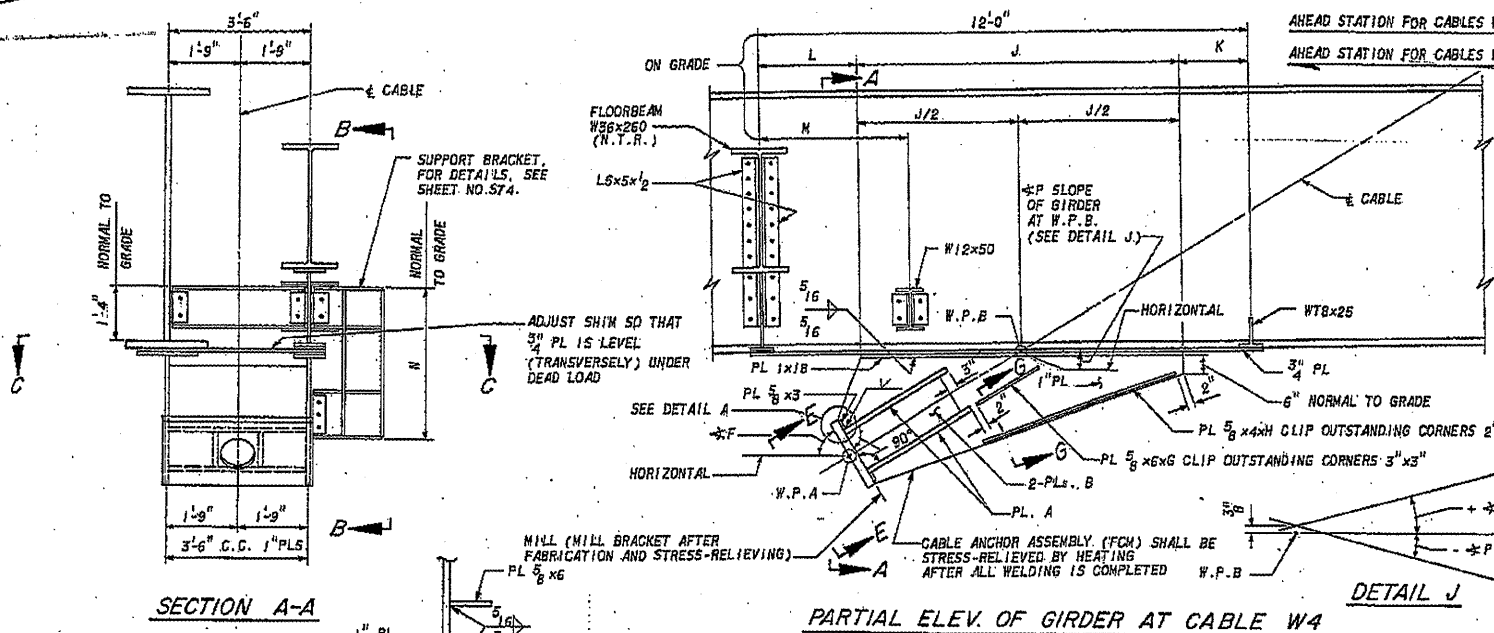
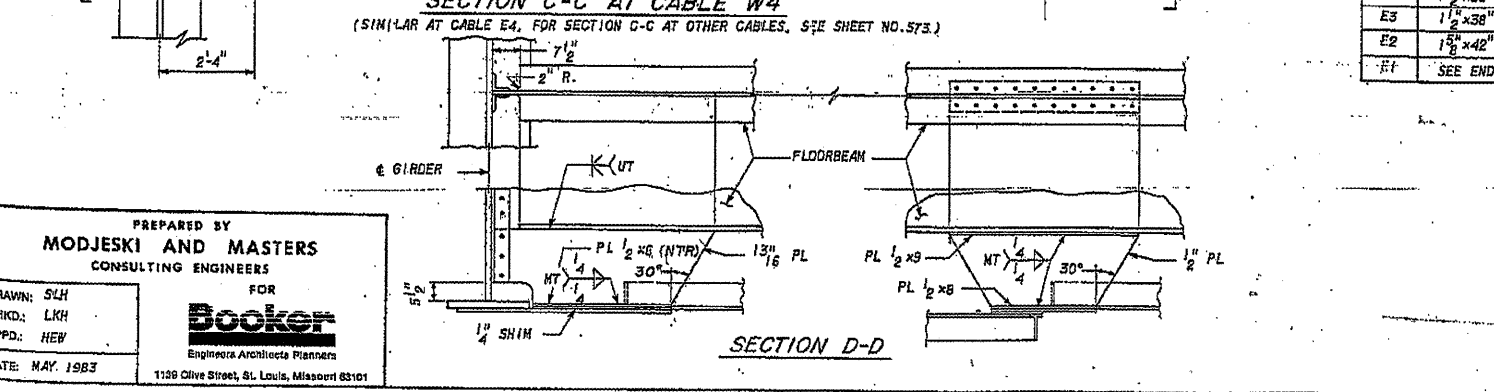


ROUTE NO.	SECTION	COUNTY	TOTAL SHEETS	SHEET NO.	SHEET NO. S72
S.B.I. P.A. 65	1-2B-1-2(2)	ADAMS	339	266	SHEETS 125
FED. ROAD DIST. NO. 7	ILLINOIS	FED. AID PROJECT BR-F-63(1)			



REVISION: STUPP BROS. DRGS. 297-50.

CABLE	PL. A	PL. B	C	D	E	F	G	H	J	K	L	M	N	O	*P
W1	SEE END FLOORBEAM DETAILS														
W2	1 1/2 x 42"	1 1/2 x 39"	22 1/2	12 1/2	13"	65-25-14"	2'-9"	6'-6"	8'-6"	2'-6 3/4"	0'-11 1/2"	2'-4"	3'-5"	35"	+ 1'-07'-26"
W3	1 1/2 x 38"	1 1/2 x 35"	22"	12 1/2"	13"	62-29-06"	2'-4"	6'-6"	8'-6"	3'-0 1/2"	0'-5 1/2"	2'-4"	3'-4"	31"	+ 1'-05'-42"
W4	1 1/2 x 36"	1 1/2 x 33"	22"	11 3/4"	11 7/8"	58-16-37"	1'-10"	6'-3"	8'-0"	1'-6 5/8"	2'-6 1/8"	3'-8"	3'-9"	25"	+ 1'-04'-01"
W5	1 1/2 x 32"	1 1/2 x 29"	22"	11 3/4"	11 7/8"	51-39-08"	1'-5"	4'-9"	6'-0"	2'-2 5/8"	3'-9 1/8"	4'-9"	3'-8"	21"	+ 1'-02'-20"
W6	1 1/2 x 26"	1 1/2 x 23"	22"	11 3/4"	11 7/8"	41-58-02"	NONE	3'-11"	5'-6"	3'-5 1/2"	3'-0 1/2"	4'-4"	3'-8"	17"	+ 1'-00'-36"
W7	1 1/2 x 24"	1 1/2 x 21"	22"	9 1/4"	9 3/4"	24-46-14"	NONE	2'-5"	4'-6"	3'-2 1/2"	4'-3 7/8"	5'-10"	3'-6 1/2"	12"	+ 0'-58'-58"
W8	1 1/2 x 22"	1 1/2 x 19"	22"	9 1/4"	9 3/4"	24-21-37"	NONE	2'-6"	4'-6"	3'-11 1/4"	3'-6 3/4"	5'-0"	3'-5 1/2"	11"	+ 0'-55'-34"
W9	1 1/2 x 26"	1 1/2 x 23"	22"	11 3/4"	11 7/8"	41-38-06"	NONE	3'-8"	5'-6"	4'-1 1/2"	2'-4 1/2"	3'-10"	3'-7 1/2"	17"	+ 0'-53'-56"
W10	1 1/2 x 32"	1 1/2 x 29"	22"	11 3/4"	11 7/8"	51-55-57"	1'-5"	4'-5"	6'-0"	2'-6 1/2"	3'-3 3/8"	4'-4"	3'-7 1/2"	20"	+ 0'-52'-19"
W11	1 1/2 x 36"	1 1/2 x 33"	22"	11 3/4"	11 7/8"	58-24-32"	1'-8"	6'-3"	8'-0"	1'-11 1/8"	2'-0 3/8"	3'-6"	3'-8"	24"	+ 0'-50'-42"
W12	1 1/2 x 38"	1 1/2 x 35"	22"	11 3/4"	11 7/8"	62-46-59"	2'-1"	6'-10"	8'-6"	1'-2 1/8"	2'-5 9/16"	3'-6"	3'-8"	22"	+ 0'-49'-05"
W13	1 1/2 x 38"	1 1/2 x 35"	22"	11 3/4"	11 7/8"	65-53-47"	2'-5"	6'-10"	8'-6"	1'-8 1/4"	1'-9 3/4"	3'-6"	3'-6"	31"	+ 0'-47'-28"
W14	1 1/2 x 40"	1 1/2 x 37"	22"	11 3/4"	11 7/8"	68-16-34"	2'-8"	7'-3"	8'-6"	2'-0"	1'-6"	2'-8"	3'-5"	34"	+ 0'-45'-50"
E14	1 1/2 x 40"	1 1/2 x 37"	22"	11 3/4"	11 7/8"	66-07-47"	2'-8"	7'-3"	8'-6"	2'-9 1/8"	1'-4 1/8"	2'-8"	3'-5"	34"	+ 0'-44'-53"
E13	1 1/2 x 38"	1 1/2 x 35"	22"	11 3/4"	11 7/8"	64-36-35"	2'-5"	6'-10"	8'-6"	1'-9 3/8"	1'-8 3/8"	3'-0"	3'-6"	31"	+ 0'-43'-19"
E12	1 1/2 x 38"	1 1/2 x 35"	22"	11 3/4"	11 7/8"	61-35-39"	2'-1"	6'-10"	8'-6"	1'-4"	2'-2"	3'-6"	3'-8"	27"	+ 0'-41'-42"
E11	1 1/2 x 36"	1 1/2 x 33"	22"	11 3/4"	11 7/8"	57-18-51"	1'-8"	6'-3"	8'-0"	2'-0 3/8"	1'-11 1/8"	3'-6"	3'-8"	24"	+ 0'-40'-05"
E10	1 1/2 x 32"	1 1/2 x 29"	22"	11 3/4"	11 7/8"	50-59-36"	1'-3"	4'-5"	6'-0"	2'-10 3/8"	3'-1 1/8"	4'-4"	3'-7 1/2"	20"	+ 0'-38'-28"
E9	1 1/2 x 26"	1 1/2 x 23"	22"	11 3/4"	11 7/8"	40-57-27"	NONE	3'-8"	5'-6"	4'-2 5/8"	2'-3 3/8"	3'-10"	3'-7 1/2"	17"	+ 0'-36'-50"
E8	1 1/2 x 22"	1 1/2 x 19"	22"	9 1/4"	9 3/4"	24-05-18"	NONE	2'-6"	4'-6"	4'-0 3/8"	3'-5 3/8"	5'-0"	3'-5 1/2"	11"	+ 0'-35'-10"
E7	1 1/2 x 24"	1 1/2 x 21"	22"	9 1/4"	9 3/4"	25-03-23"	NONE	2'-9"	4'-6"	3'-0 3/8"	4'-5 3/8"	5'-10"	3'-6 1/2"	12"	+ 0'-31'-52"
E6	1 1/2 x 26"	1 1/2 x 23"	22"	11 3/4"	11 7/8"	42-40-08"	NONE	3'-1"	5'-6"	3'-3 1/8"	3'-2 1/8"	4'-4"	3'-8"	17"	+ 0'-30'-07"
E5	1 1/2 x 32"	1 1/2 x 29"	22"	11 3/4"	11 7/8"	52-57-04"	1'-5"	4'-9"	6'-0"	2'-0 3/4"	3'-11 1/4"	4'-9"	3'-8"	21"	+ 0'-28'-26"
E4	1 1/2 x 36"	1 1/2 x 33"	22"	11 3/4"	11 7/8"	59-23-50"	1'-10"	6'-3"	8'-0"	1'-7 1/8"	2'-9 3/8"	3'-8"	3'-9"	25"	+ 0'-26'-42"
E3	1 1/2 x 38"	1 1/2 x 35"	22"	12 1/2"	13"	63-41-24"	2'-4"	6'-5"	8'-6"	2'-11 3/8"	0'-6 1/8"	2'-4"	3'-4"	31"	+ 0'-25'-01"
E2	1 1/2 x 42"	1 1/2 x 39"	22 1/2	12 1/2"	13"	66-41-45"	2'-9"	6'-6"	8'-6"	2'-4 1/8"	1'-11 1/8"	2'-4"	3'-5"	35"	+ 0'-23'-19"
E1	SEE END FLOORBEAM DETAILS, SHEET NOS. 576 & 577														



CABLE ANCHOR ASSEMBLY DIMENSIONS

NOTE: ALL CABLE ANCHOR ASSEMBLIES SHALL BE COVERED TO LIMIT ACCESS INTO VOID. FOR DETAILS, SEE SHEET S74.

NOTES:

- FOR STATION AND ELEVATION OF W.P.A & B, SEE SHEET NO. S20.
- FOR ADDITIONAL SECTION C-C DETAILS, SEE SHEET NO. S73.
- FOR SECTION H-H, K-K AND SUPPORT BRACKET DETAILS, SEE SHEET NO. S74.
- ALL WT SECTIONS ARE CONNECTED WITH 7/8" H.S. BOLTS AASHTO M 164 IN 1 1/2" DIA. HOLES.
- FOR STRUCTURAL STEEL FABRICATION GENERAL NOTES, SEE SHEET NO. S61.
- FOR SECTION S-S, SEE SHEET NO. S77.
- BOLT SPACING AND MIN. EDGE DISTANCE SHALL BE IN ACCORDANCE WITH ARTICLE 1.7.22 OF AASHTO STANDARD SPECIFICATIONS FOR HIGHWAY BRIDGES.
- \* ALL OTHERS = 1" H.S. IN 1 1/2" DIA. HOLES, UNLESS NOTED.

STEEL ALTERNATIVE

REV. NO.	DRAWN	CHKD.	APPLD.	DESCRIPTION	DATE
	HEE			CONSTRUCTED IN ESSENTIAL COMPLIANCE	8-8

F A ROUTE 63 (U.S. ROUTE 24) OVER MISSISSIPPI RIVER QUINCY, ILLINOIS

CABLE CONNECTION DETAILS - 1

PREPARED BY  
**MODJESKI AND MASTERS**  
CONSULTING ENGINEERS

FOR  
**Booker**  
Engineers Architects Planners

DATE: MAY 1983

1129 Olive Street, St. Louis, Missouri 63101

EXISTING STEEL PLANS FOR INFORMATION ONLY