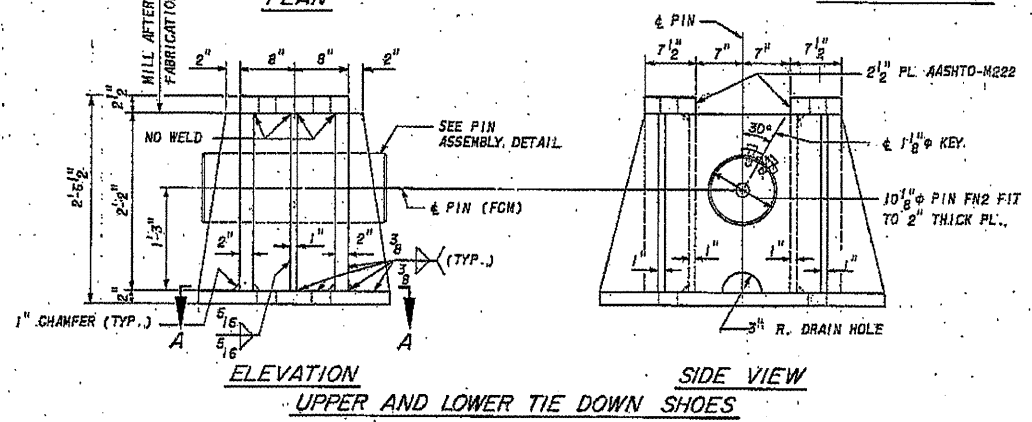
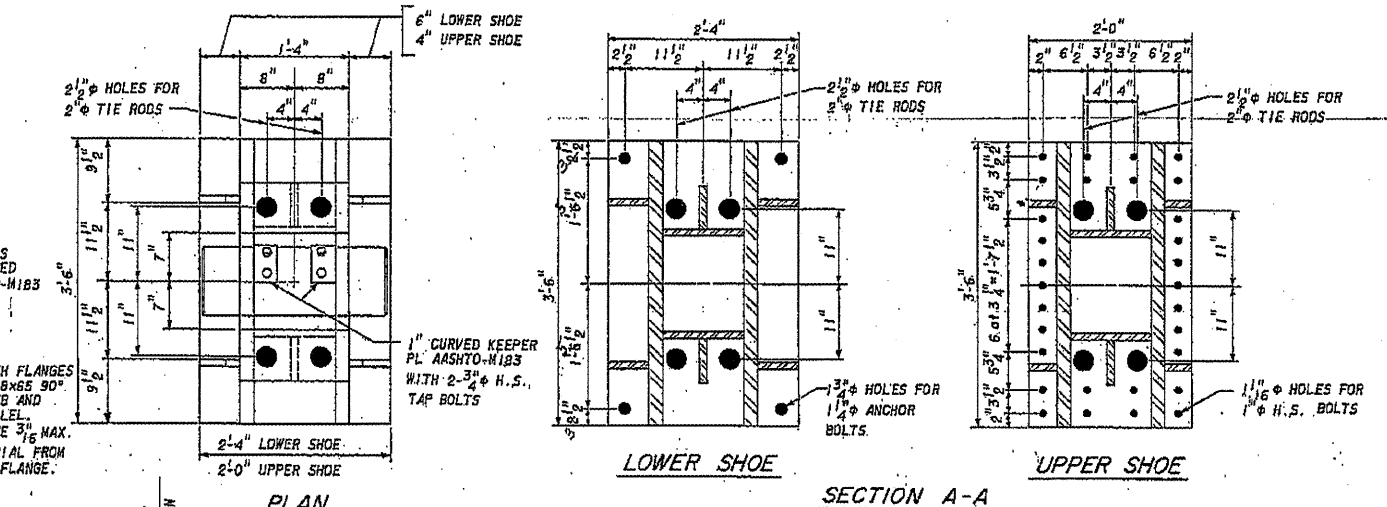
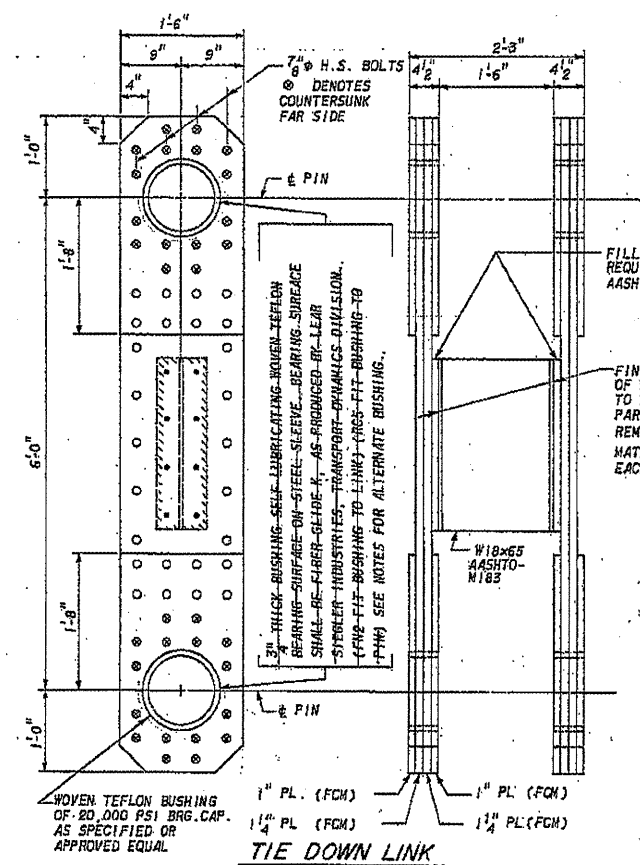
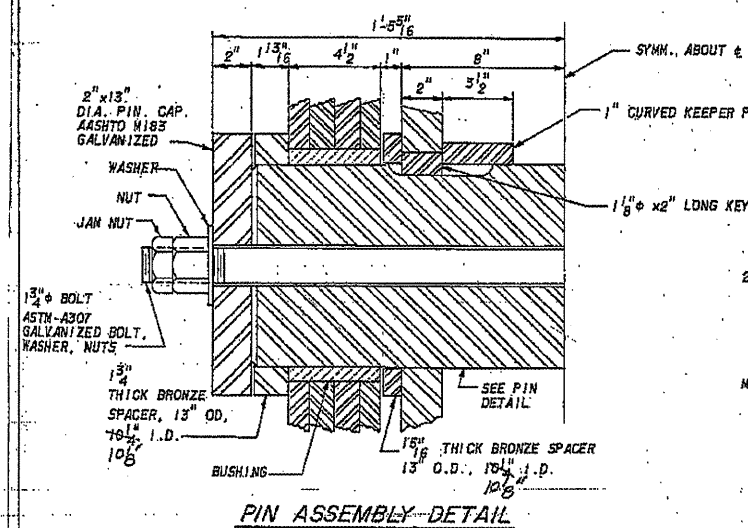


ROUTE NO.	SECTION	COUNTY	TOTAL SHEETS	SHEET NO.	SHEET NO. 378
S.B.I. 63	1-25-1-2(2)	ADAMS	339	272	SHEETS 125
F.A.					
FED. ROAD DIST. NO. 7	ILLINOIS	FED. AID PROJECT	8R-F-65()		

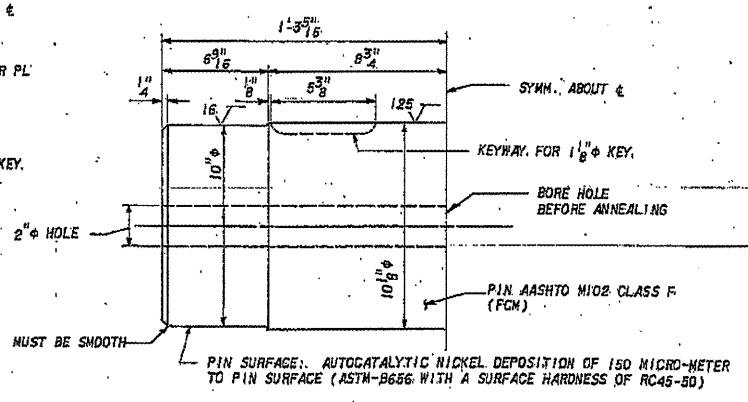


FOR DETAILS REFER TO:
 SWAMP BROS. BRIDGES & IRON CO. Digs.

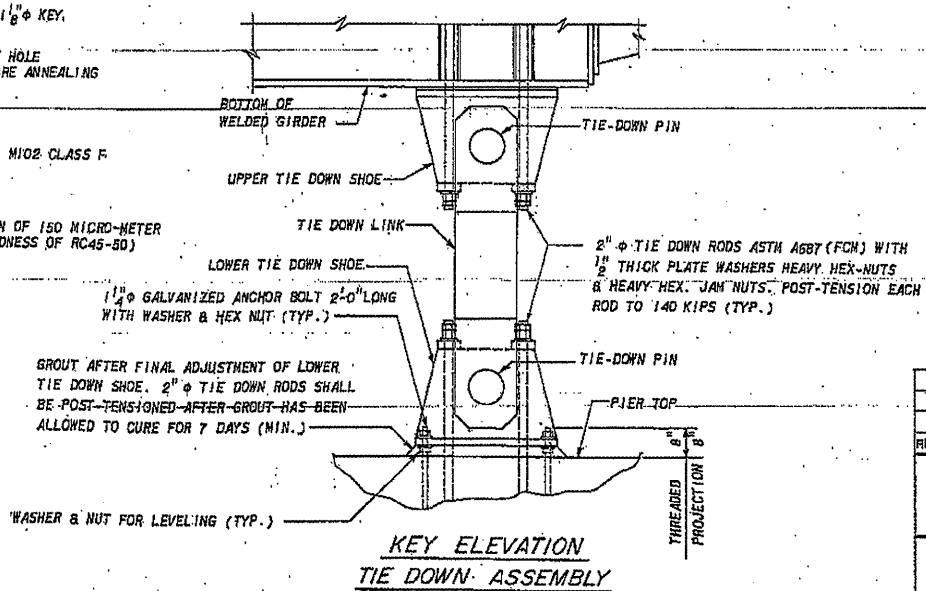
- NOTES:**
- ALL FABRICATED STRUCTURAL STEEL SHALL BE AASHTO-M222 680 UNLESS NOTED.
 - ALTERNATE BUSHING MAY BE PROVIDED AS FOLLOWS:
 - BUSHING SHALL BE A DURALON BEARING AS PRODUCED BY REXNORD BEARING DIVISION, AND WILL CONSIST OF A SELF-LUBRICATING WOVEN TEFLON BEARING, BACKED BY A FILAMENT-WOUND EPOXY MATRIX.
 - THE BUSHING SHALL BE PRESS FIT INTO THE LINK IN ACCORDANCE WITH THE BUSHING MANUFACTURER'S RECOMMENDATIONS, AND SHALL BE PROVIDED WITH A POSITIVE MEANS OF PREVENTING ROTATION OF THE BUSHING WITH RESPECT TO THE LINK.
 - THE BUSHING SHALL HAVE MINIMUM THICKNESS OF 1/4" CLEARANCE BETWEEN PIN AND INSIDE DIAMETER OF BUSHING SHALL BE .006" TO .012". PIN SIZE AND LINK DIMENSIONS SHALL BE AS SHOWN ON THIS DRAWING.



NOTE: BRONZE SPACER RINGS SHALL BE ASTM NIOT ALLOY UNS C91-100



NOTE: FIT UP TOLERANCE OF PIN AND BUSHINGS SHALL BE CHECKED IN THE SHOP. SEE SPECIAL PROVISIONS.



STEEL ALTERNATIVE

REV. NO.	DRAWN	CHKD.	APPD.	DESCRIPTION	DATE
	HEE			CONSTRUCTED IN ESSENTIAL COMPLIANCE	8-87

F A ROUTE 63 (U.S. ROUTE 24)
 OVER MISSISSIPPI RIVER
 QUINCY, ILLINOIS

END FLOORBEAM
 AND TIE DOWN DETAILS - 4

EXISTING STEEL PLANS
 FOR INFORMATION ONLY

PREPARED BY
MODJESKI AND MASTERS
 CONSULTING ENGINEERS
 FOR
Booker
 Engineers Architects Planners
 1190 Olive Street, St. Louis, Missouri 63101

DRAWN: SLH
 CHKD.: CWH
 APPD.: HEW
 DATE: MAY 1983