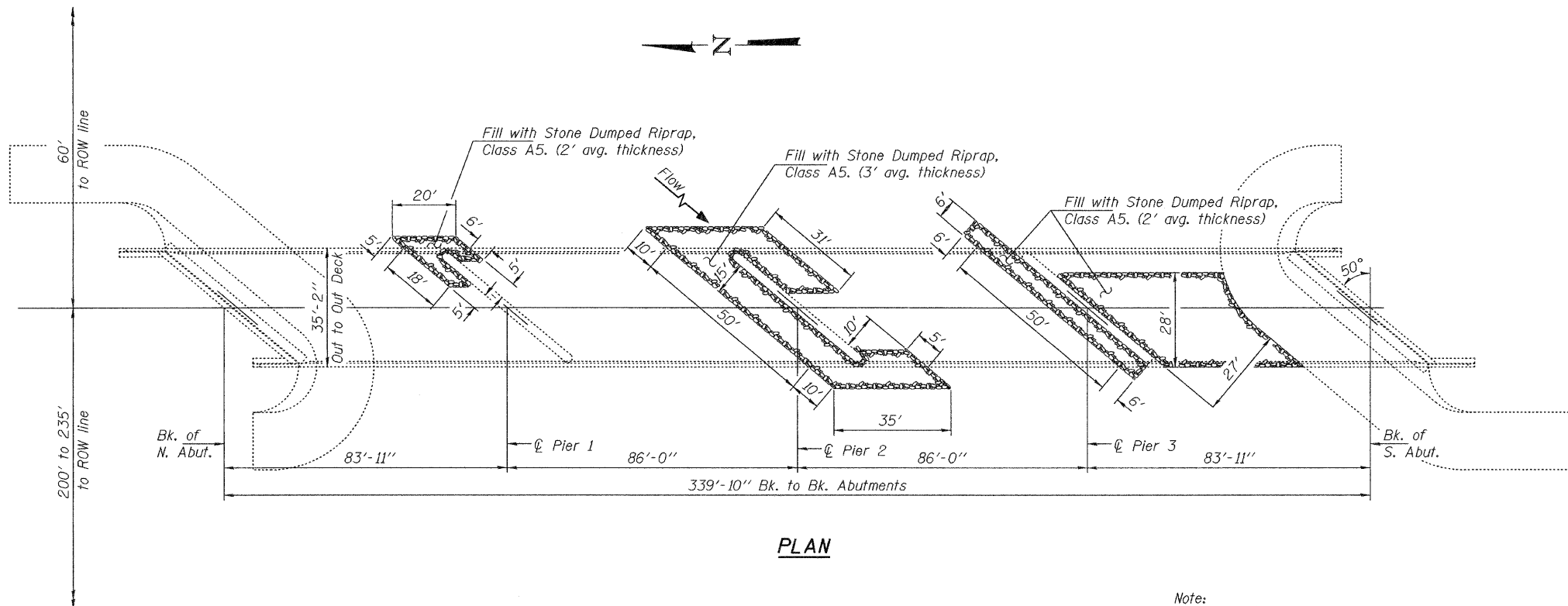


STATE OF ILLINOIS
DEPARTMENT OF TRANSPORTATION

GENERAL NOTES

Plan dimensions and details relative to existing plans are subject to routine variations. The Contractor shall field verify existing dimensions and details affecting new construction and make necessary approved adjustments prior to construction or ordering of materials. Such variations shall not be cause for additional compensation for a change in scope of the work, however, the Contractor will be paid for the quantity actually furnished based upon the unit price bid for the work.

Layout of the slope protection system may be varied to suit ground conditions in the field as directed by the Engineer.



PLAN

Note:
Excavation and reshaping of channel and bank may be required to facilitate proper placement of Stone Dumped Riprap. Cost to be included as Channel Excavation.

TOTAL BILL OF MATERIAL

ITEM	UNIT	QUANTITY
Stone Dumped Riprap, Class A5	Tons	430
Channel Excavation	Cu. Yds.	67

Estimated quantities. Actual quantities to be determined in the field.

DESIGNED	<i>[Signature]</i>
CHECKED	<i>[Signature]</i>
DRAWN	baliva
CHECKED	AB

SEPTEMBER 30, 2008
EXAMINED *[Signature]*
PASSED *[Signature]*
ENGINEER OF STRUCTURAL SERVICES
ENGINEER OF BRIDGES AND STRUCTURES



EXPIRES 11-30-2010

**PLAN AND REPAIR DETAILS
IL 130 OVER HURRICANE CREEK**

SHEET NO. 1 1 SHEETS	F.A. RTE.	SECTION	COUNTY	TOTAL SHEETS	SHEET NO.
	116	D7 Scour Repair 2009-1	CUMBERLAND	19	10
FED. ROAD DIST. NO.		ILLINOIS	FED. AID PROJECT		
		SN 018-0058	CONTRACT NO. 74348		