

F.A.P. RTE.	SECTION	COUNTY	TOTAL SHEETS	SHEET NO.
609	***	ST. CLAIR	350	1

***76RS-3, 76-2BR-21

STATE OF ILLINOIS DEPARTMENT OF TRANSPORTATION DIVISION OF HIGHWAYS PROPOSED HIGHWAY PLANS

**FAP ROUTE 609 (IL RTE 163)
SECTION 76RS-3, 76-2BR-21
PROJECT: AGHSIP-0609(017)
ST. CLAIR COUNTY**

C-98-006-07

SHEET NO.	DESCRIPTION
1	COVER SHEET
2 - 3	GENERAL NOTES AND STANDARDS
4 - 6	SUMMARY OF QUANTITIES
7 - 12	TYPICAL SECTIONS
13 - 23	SCHEDULE OF QUANTITIES
24 - 29	ALIGNMENT, TIES, AND BENCHMARKS
30 - 36	REMOVAL & ADJUSTMENT PLANS
37 - 49	PLAN & PROFILES
50 - 56	SUGGESTED STAGES OF CONSTRUCTION AND TRAFFIC CONTROL SHEETS
57 - 58	STORM WATER POLLUTION PREVENTION PLAN
59 - 68	EROSION CONTROL PLANS
69 - 71	DRAINAGE PLANS & PROFILES
72 - 96	RIGHT-OF-WAY SHEETS
97 - 103	INTERSECTION DETAILS
104 - 109	PAVEMENT STRIPING PLANS
110 - 120	DRAINAGE DETAILS
121 - 123	ENTRANCE DETAILS
124 - 125	BUTT JOINT DETAILS
126 - 127	SCOUR MITIGATION SHEETS
128 - 261	CROSS SECTIONS
262 - 339	STAGING CROSS SECTIONS
340 - 350	CROSS SECTIONS SCOUR MITIGATION

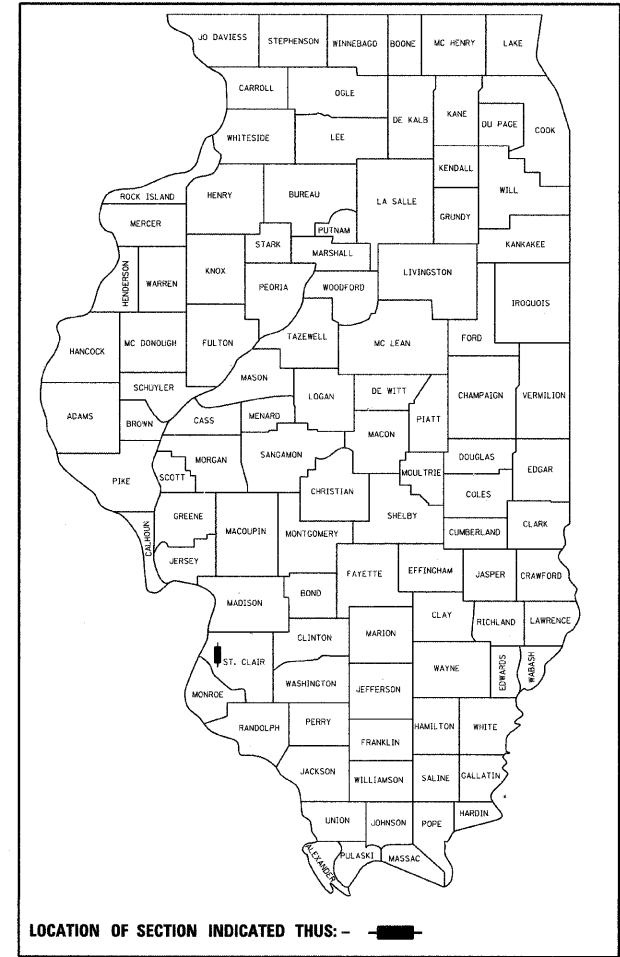
STANDARDS

SEE SHEET NO. 2

UTILITIES

SEE SHEET NO. 2

D98-105-99



STATE OF ILLINOIS
DEPARTMENT OF TRANSPORTATION
DIVISION OF HIGHWAYS

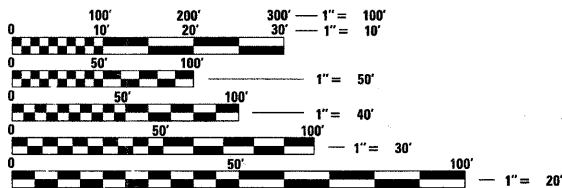
SUBMITTED Aug 14, 2008
May C. Hamis
DEPUTY DIRECTOR OF HIGHWAYS
REGION FIVE ENGINEER

October 3, 2008
Eric E. Harms
ENGINEER OF DESIGN AND ENVIRONMENT

October 3, 2008
Christina M. Reed
DIRECTOR, DIVISION OF HIGHWAYS

**PRINTED BY THE AUTHORITY
OF THE STATE OF ILLINOIS**

MICROFILMED _____
REEL NUMBER _____
AWARDED _____
RESIDENT ENGINEER _____
AS BUILT CHANGES WERE MADE
ON THE FOLLOWING SHEETS

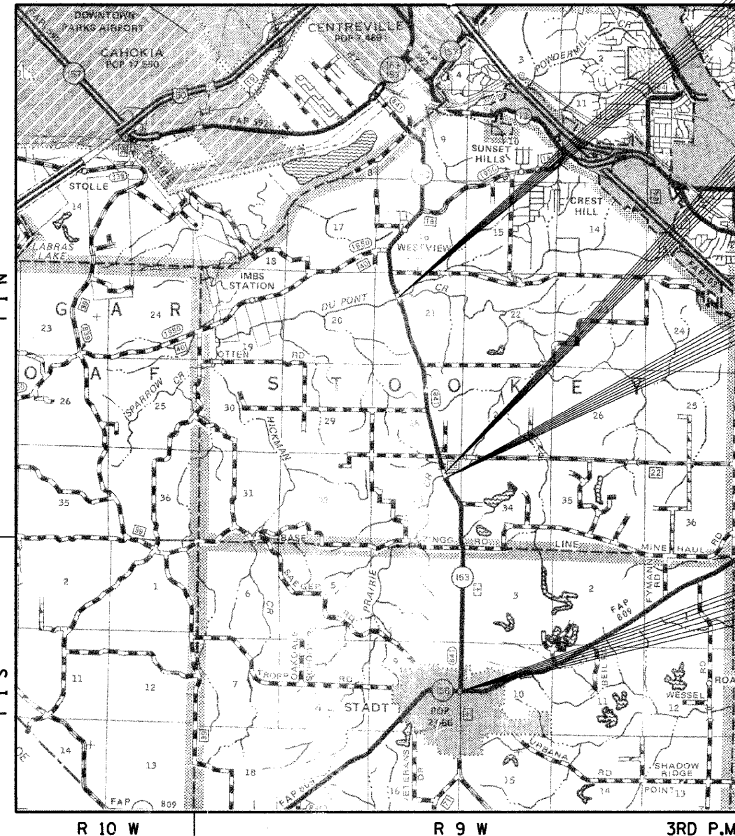


FULL SIZE PLANS HAVE BEEN PREPARED USING STANDARD ENGINEERING SCALES. REDUCED SIZED PLANS WILL NOT CONFORM TO STANDARD SCALES. IN MAKING MEASUREMENTS ON REDUCED PLANS, THE ABOVE SCALES MAY BE USED.

J.U.L.I.E.
JOINT UTILITY LOCATION INFORMATION FOR EXCAVATION
1-800-892-0123

CONTRACT NO. 76A34
TO: VS-IP: MILLSTADT / STOOKEY

RURAL MINOR ARTERIAL / URBAN MINOR ARTERIAL
ADT = 4000 % TRUCK 6



STA. 245+52.24
SECTION 76-2BR-21
SN 082-0104
FOR SCOUR MITIGATION

STA. 138+66.06 SN 082-0305
BRIDGE DESCRIPTION:
SINGLE SPAN PRECAST, PRESTRESSED
CONCRETE I-BEAM STRUCTURE WITH
CONCRETE SPILL-THRU ABUTMENTS.
(FOR INFORMATION ONLY)

END PROJECT
SECTION 76RS-3
STA. 136+00.00

BEGIN PROJECT
SECTION 76RS-3
STA. 9+74.00



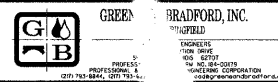
SIGNED: William C. Booth DATE: 8/2/08

EXPIRES: 11/30/09

LAYOUT
0 MI 1 MI 2 MI 3 MI
1" = 1 MILE
NET LENGTH OF PROJECT = 12,626.00 FEET = 2.391 MILES
GROSS LENGTH = 2.391 MILES

REVISION	DATE	BY	COMPUTER FILE NO.
1	3/17/08	WCB/MDS	COVER_V8
			PROJECT: 00076
			9/28/07-MDS

PLANS PREPARED BY:



PROJECT ENGINEER: PATTI LEBEAU 1-618-346-3179
SQUAD LEADER: CHERYL KEPLAR 1-618-346-3186