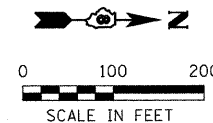
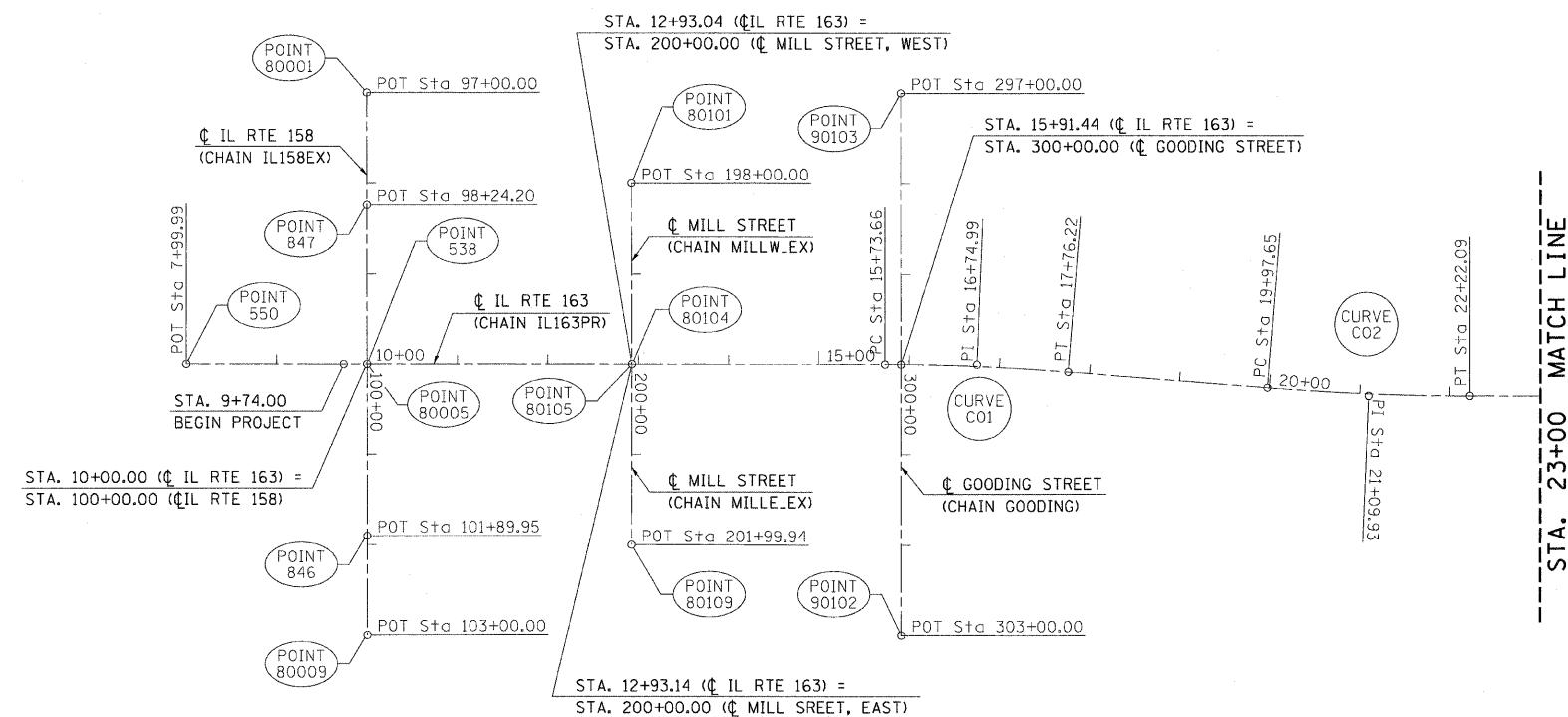


F.A.P. RTE.	SECTION	COUNTY	TOTAL SHEETS	SHEET NO.
609	...	ST. CLAIR	350	24
STA. -		TO STA. -		
FED. ROAD DIST. NO.		ILLINOIS	FED. AID PROJECT	

... 76RS-3, 76-2BR-21

BENCH MARKS
SEE PLAN & PROFILE SHEETS FOR BENCH MARK DATA.

HORIZONTAL AND VERTICAL CONTROL



Beginning chain 158EX description

Point 80001	N	653,538.8600 E	2,317,892.8792 Sta	97+00.00
Course from 80001 to 847 S 89° 59' 23.39" E Dist 124.2008				
Point 847	N	653,538.8380 E	2,318,017.0800 Sta	98+24.20
Course from 847 to 80005 S 89° 59' 23.39" E Dist 175.7992				
Point 80005	N	653,538.8068 E	2,318,192.8792 Sta	100+00.00
Course from 80005 to 846 S 89° 59' 22.21" E Dist 189.9508				
Point 846	N	653,538.7720 E	2,318,382.8300 Sta	101+89.95
Course from 846 to 80009 S 89° 59' 22.21" E Dist 110.0492				
Point 80009	N	653,538.7518 E	2,318,492.8792 Sta	103+00.00

Ending chain 158EX description

Beginning chain MILLE EX description

Point 80101	N	653,831.6640 E	2,317,993.3080 Sta	198+00.00
Course from 80101 to 80104 N 89° 56' 56.53" E Dist 200.0002				
Point 80104	N	653,831.8419 E	2,318,193.3082 Sta	200+00.00

Ending chain MILLE EX description

Beginning chain MILLE EX description

Point 80105	N	653,831.9510 E	2,318,193.3083 Sta	200+00.00
Course from 80105 to 80109 S 89° 47' 51.68" E Dist 199.9439				
Point 80109	N	653,831.2450 E	2,318,393.2510 Sta	201+99.94

Ending chain MILLE EX description

Beginning chain GOODING description

Point 90103	N	654,130.4442 E	2,317,893.8071 Sta	297+00.00
Course from 90103 to 90102 S 89° 57' 44.45" E Dist 600.0000				
Point 90102	N	654,130.0498 E	2,318,493.8070 Sta	303+00.00

Ending chain GOODING description

Beginning chain 163CLPR description

Point 550 N 653,338.8020 E 2,318,192.5860 Sta 7+99.99 Course from PT C01 to PC C02 N 4° 38' 28.59" E Dist 221.4275

Course from 550 to 538 N 0° 05' 02.38" E Dist 200.0050

Point 538 N 653,538.8068 E 2,318,192.8792 Sta 10+00.00

Course from 538 to PC C01 N 0° 05' 01.94" E Dist 573.6590

Curve Data		Curve Data	
-----		*-----*	
Curve C01		Curve C02	
P.I. Station	16+74.99 N 654,213.8005 E 2,318,193.8673	P.I. Station	21+09.93 N 654,647.4136 E 2,318,229.0694
Delta	4° 33' 26.65" (RT)	Delta	4° 29' 18.78" (LT)
Degree	2° 14' 59.49"	Degree	1° 59' 59.65"
Tangent	101.3355	Tangent	112.2767
Length	202.5640	Length	224.4386
Radius	2,546.6400	Radius	2,864.9300
External	2.0154	External	2.1992
Long Chord	202.5106	Long Chord	224.3812
Mid. Ord.	2.0138	Mid. Ord.	2.1975
P.C. Station	15+73.66 N 654,112.4652 E 2,318,193.7190	P.C. Station	19+97.65 N 654,535.5051 E 2,318,219.9843
P.T. Station	17+76.22 N 654,314.8037 E 2,318,202.0671	P.T. Station	22+22.09 N 654,759.6899 E 2,318,229.3687
C.C.	N 654,108.7372 E 2,320,740.3562	C.C.	N 654,767.3266 E 2,315,364.4489
Back	N 0° 05' 01.94" E	Back	N 4° 38' 28.59" E
Ahead	N 4° 38' 28.59" E	Ahead	N 0° 09' 09.81" E
Chord Bear	N 2° 21' 45.27" E	Chord Bear	N 2° 23' 49.20" E

Course from PT C02 to 599 N 0° 09' 09.81" E Dist 4,859.5265

Point 599 N 659,619.1991 E 2,318,242.3221 Sta 70+81.62

REVISIONS	
NAME	DATE
IDOT REVIEW	03/08

ILLINOIS DEPARTMENT OF TRANSPORTATION
HORIZONTAL & VERTICAL CONTROL

FAP RTE 609 (IL RTE. 163)
SECTION 76RS-3, 76-2BR-21
ST. CLAIR COUNTY

SCALE: VERT. _____
HORIZ. _____
DATE 8/20/07

DRAWN BY SUTHEARD
CHECKED BY BOTT

GREENE & BRADFORD, INC.
OF SPRINGFIELD
CONSULTING ENGINEERS
PROFESSIONAL ENGINEERS
REGISTERED IN ILLINOIS
1201 W. BROADWAY, SUITE 1000, SPRINGFIELD, ILLINOIS 62760-1000
PH: 217.244.1100 FAX: 217.244.1101

COMPUTER FILE NO.
HVC163A
PROJECT 02076
8/21/07-MDS

PLOT DATE = 7/26/2008 11:53:10 AM
FILE NAME = J:\A22076\DRAWINGS\HVC163A.dgn
PLOT SCALE = 1/8"=1'-0"
MODEL = Default
OPERATOR =