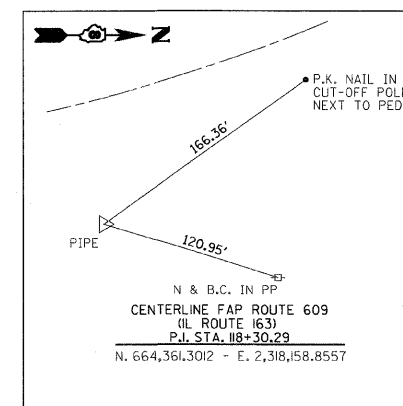
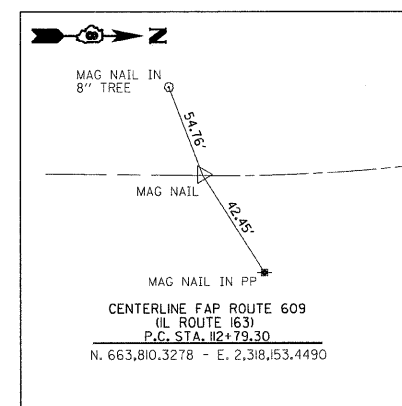
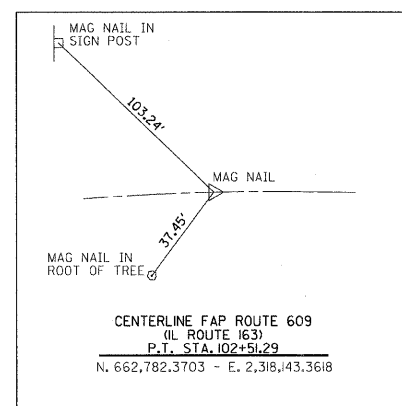
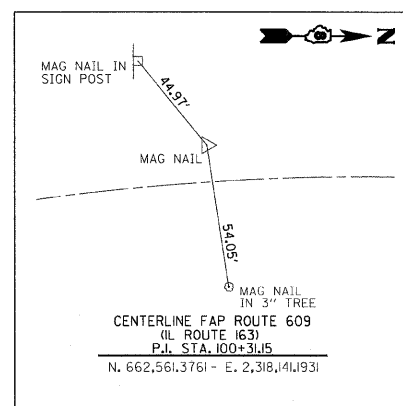
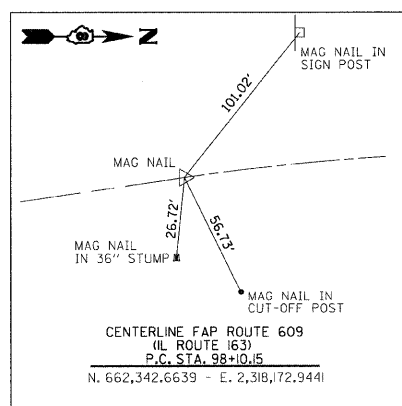
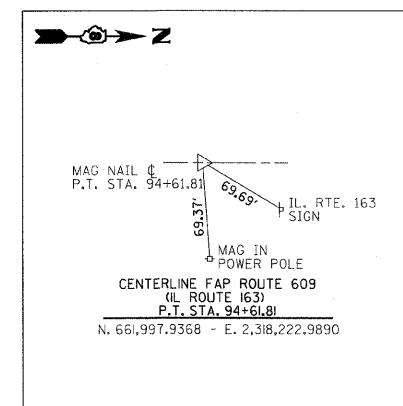
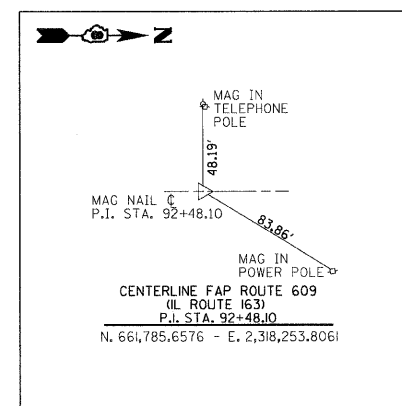
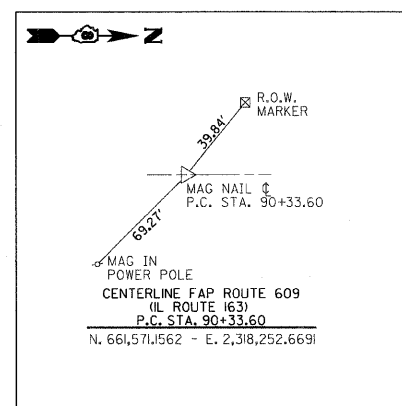
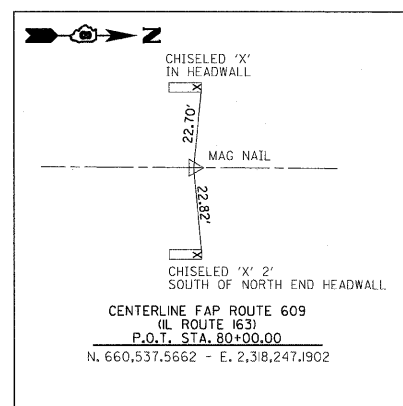
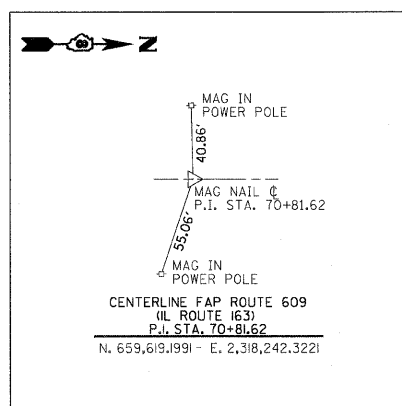
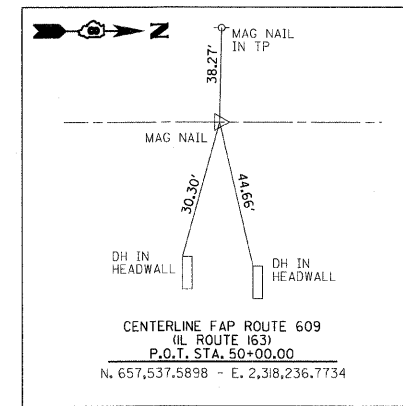
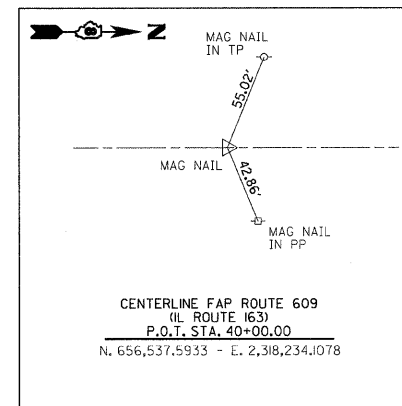
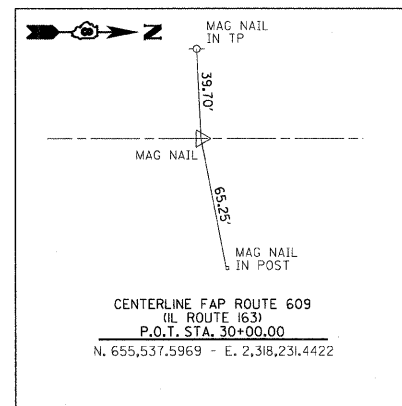
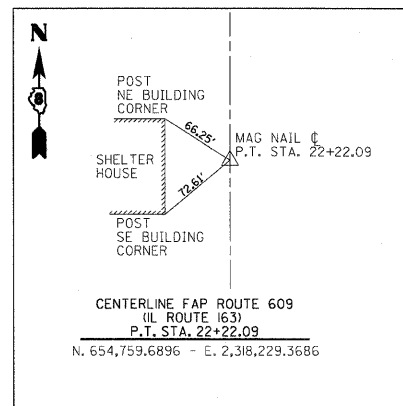
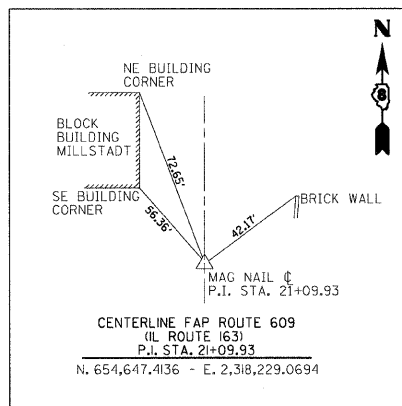
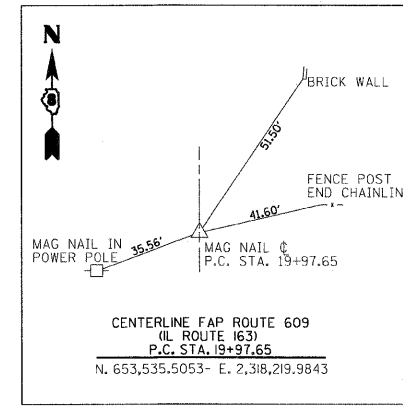
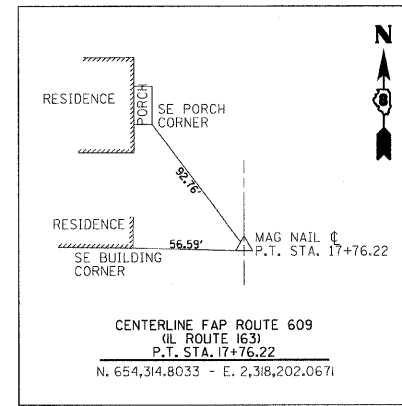
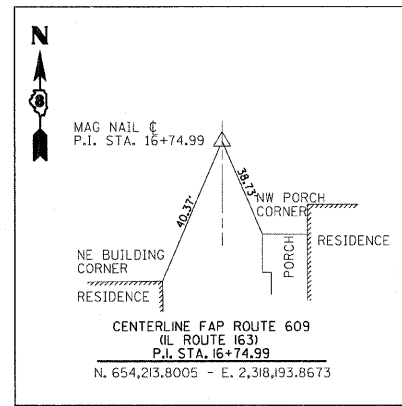
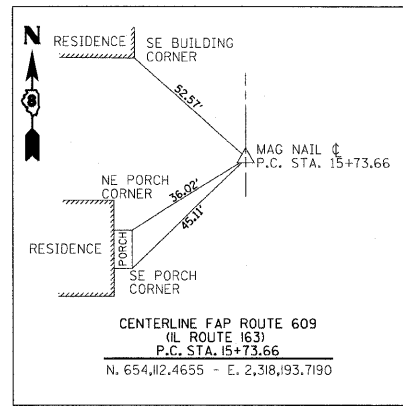
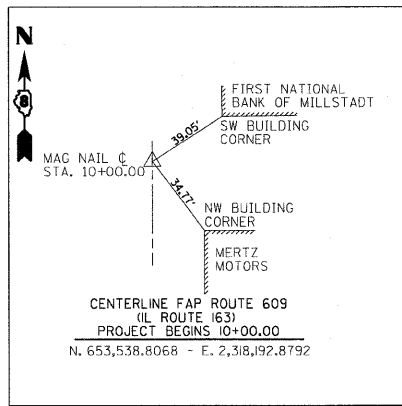


F.A.P. RT.E.	SECTION	COUNTY	TOTAL SHEETS	SHEET NO.
609		ST. CLAIR	350	28
STA. -		TO STA. -		
FED. ROAD DIST. NO.		ILLINOIS FED. AID PROJECT		
CONTRACT NO. 76A34				
• 76RS-3, 76-2BR-21				



REVISIONS	
NAME	DATE
IDOT REVIEW	MAR/08

ILLINOIS DEPARTMENT OF TRANSPORTATION

CENTERLINE TIES

FAP 609 (IL RTE. 163)
SECTION 76RS-3, 76-2BR-21
ST. CLAIR COUNTY

SCALE: VERT. 1"=40'
HORIZ. 1"=40'
DATE: 12/18/02

DRAWN BY: VERENSKI
DESIGNED BY: BOTT
CHECKED BY: EMRICK

GREENE & BRADFORD, INC.
OF SPRINGFIELD
CONSULTING ENGINEERS
3805 CONSTITUTION DRIVE
SPRINGFIELD, ILLINOIS 62707
1-217-752-8844

COMPUTER FILE NO.
CL_TIES_V8-1

PROJECT: 02076
05/30/07-FAV

PLOT DATE: 7/25/2008
PLOT SCALE: 1"=40'
USER NAME: jmorris