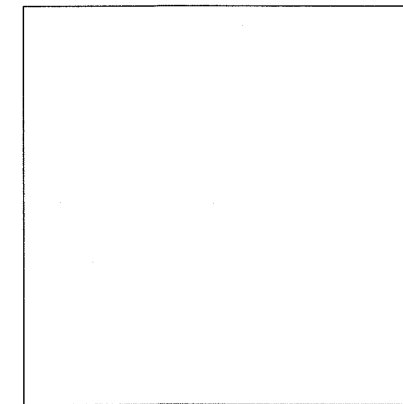
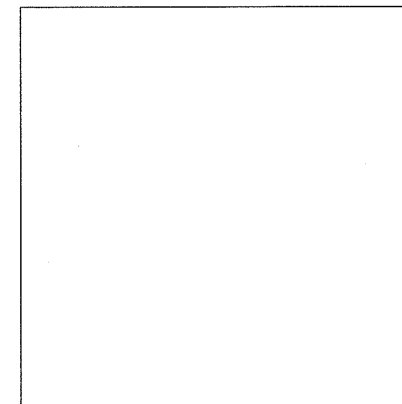
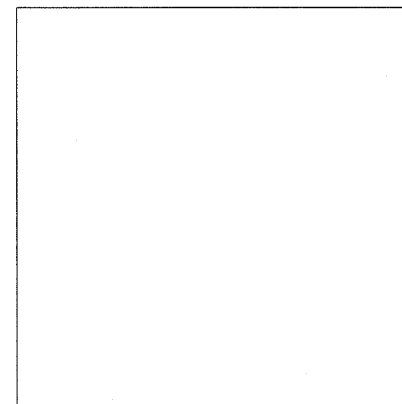
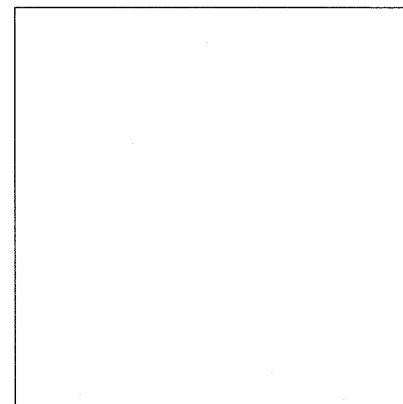
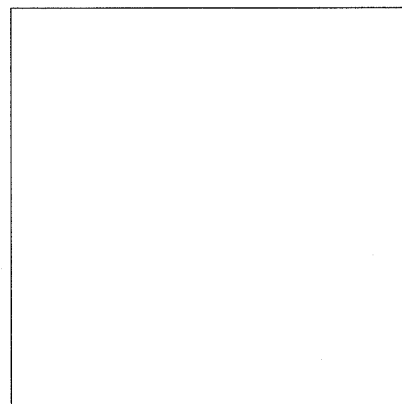
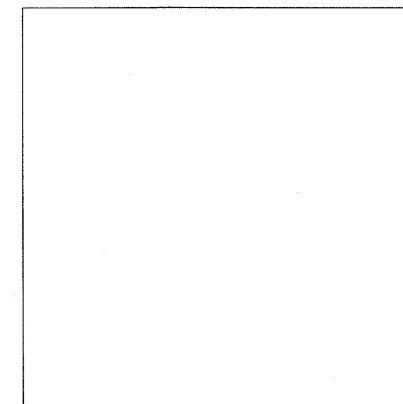
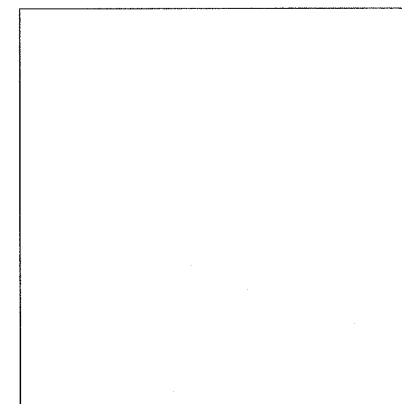
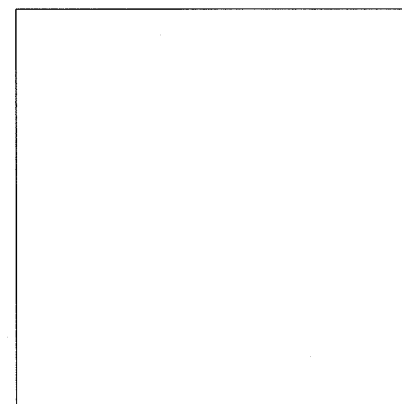
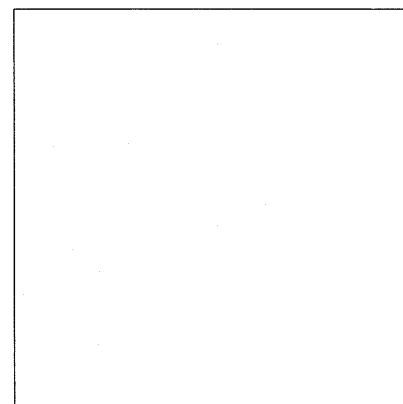
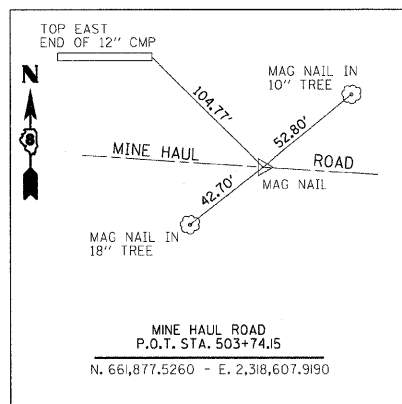
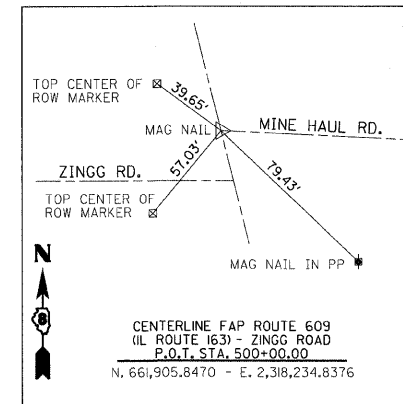
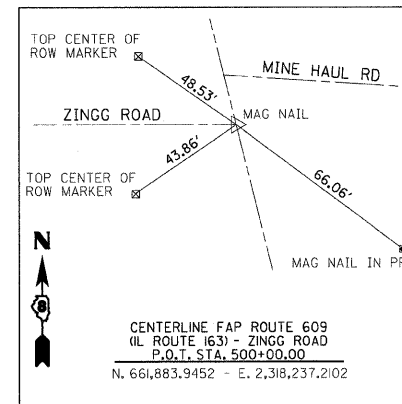
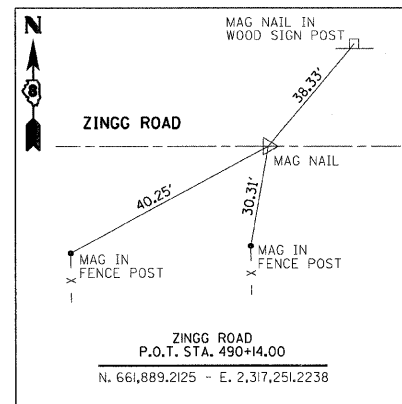
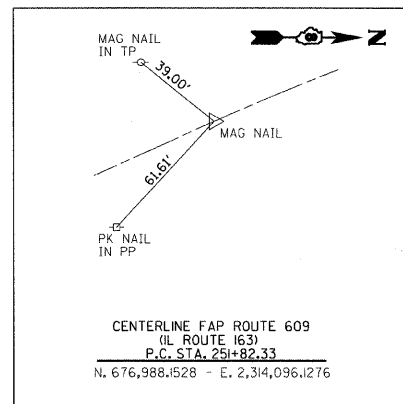
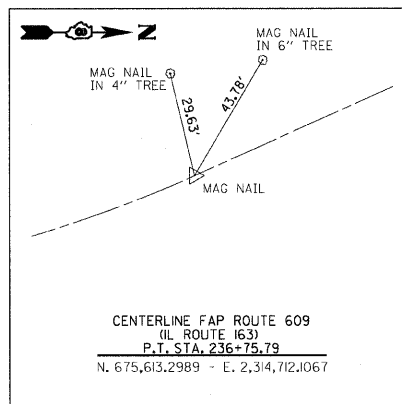
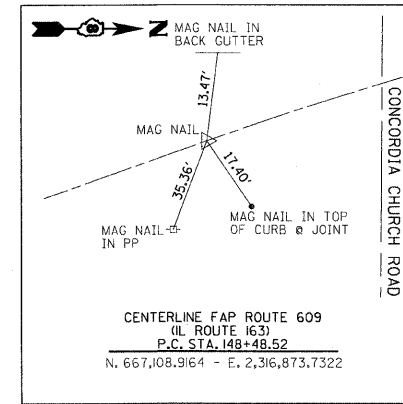
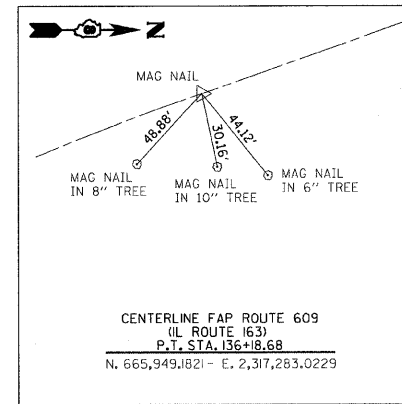
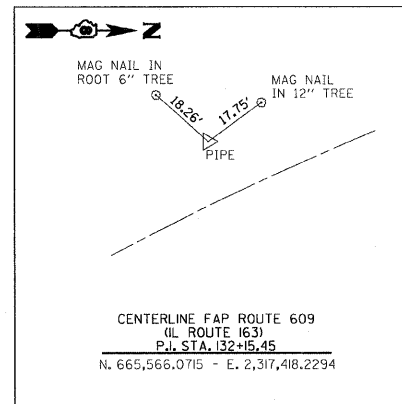
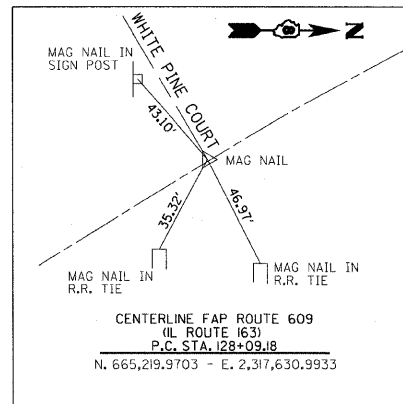
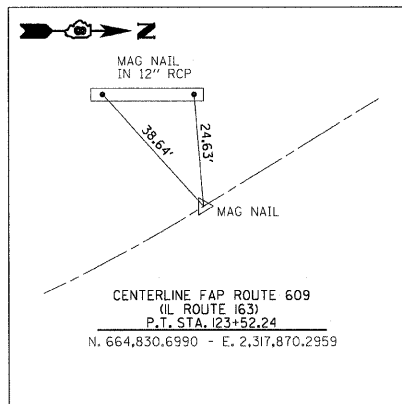


F.A.P. RT.E.	SECTION	COUNTY	TOTAL SHEETS	SHEET NO.
609		ST. CLAIR	350	29
STA. -		TO STA. -		
FED. ROAD DIST. NO.		ILLINOIS FED. AID PROJECT		
CONTRACT NO. 76A34				
• 76RS-3, 76-2BR-21				



REVISIONS	
NAME	DATE
IDOT REVIEW	MAR/08

ILLINOIS DEPARTMENT OF TRANSPORTATION

**CENTERLINE TIES**

FAP 609 (IL RTE. 163)  
SECTION 76RS-3, 76-2BR-21  
ST. CLAIR COUNTY

SCALE: VERT. 1"=40'  
HORIZ. 1"=40'  
DATE: 12/18/02

DRAWN BY: VERENSKI  
DESIGNED BY: BOTT  
CHECKED BY: EMRICK

GREENE & BRADFORD, INC.  
OF SPRINGFIELD  
CONSULTING ENGINEERS  
3001 CONSTITUTION DRIVE  
SPRINGFIELD, ILLINOIS 62707  
TEL: 217-782-8844

COMPUTER FILE NO.  
CL\_TIES\_V8-2

PROJECT: 02076  
05/30/07-FAV

PLOT DATE = 7/25/2008  
PLOT SCALE = 1/8"=1'-0"  
PLOT SCALE = 20.0000 / IN.  
USER NAME = mcrs