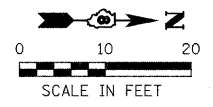
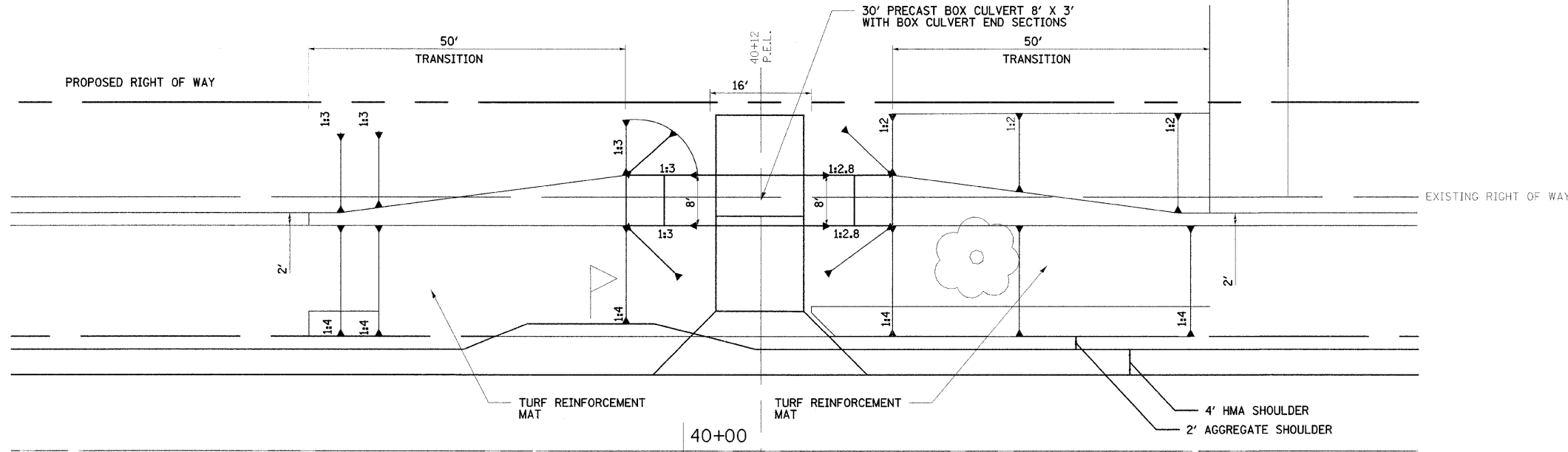
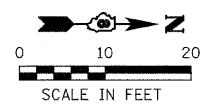
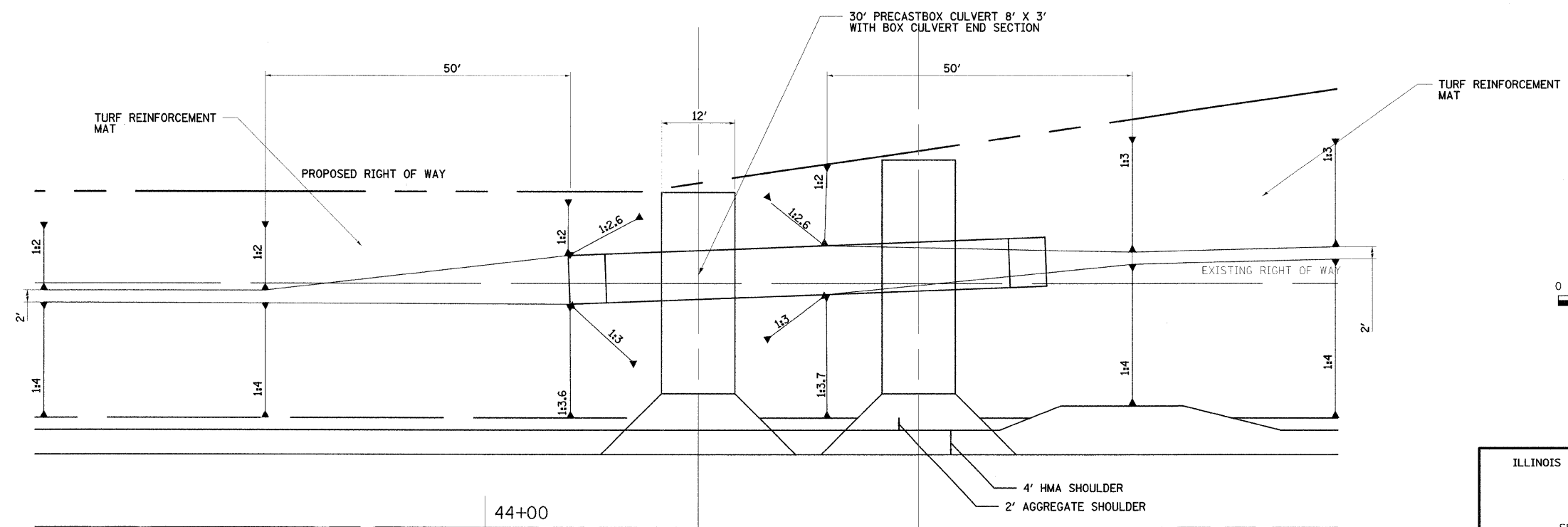


F.A.P. RTE.	SECTION	COUNTY	TOTAL SHEETS	SHEET NO.
609	***	ST. CLAIR	350	113
STA.		TO STA.		
FED. ROAD DIST. NO.		ILLINOIS FED. AID PROJECT		
*** 76RS-3, 76-2BR-21				



P.E. STA. 40+12, LT.

☐ FAP 609 (IL RTE 163)



P.E. STA. 44+35, LT.

☐ FAP 609 (IL RTE 163)

ILLINOIS DEPARTMENT OF TRANSPORTATION

DETAILS

FAP 609 (IL RTE. 163)
SECTION 76RS-3, 76-2BR-21
ST. CLAIR COUNTY

SCALE: VERT. _____
HORIZ. _____
DATE 9/12/07

DRAWN BY: SUTHEARD
DESIGNED BY: BOTT
CHECKED BY: BOTT

GREENE & BRADFORD, INC.
OF SPRINGFIELD
CONSULTING ENGINEERS
3001 ZEPHYRUS DRIVE
SPRINGFIELD, ILLINOIS 62761
(217) 792-8844

COMPUTER FILE NO.
DETAILS01-3

PROJECT: 02076
09/27/07-FAV

REVISIONS	
NAME	DATE
IDOT REVIEW	03/08

DESIGN		
INT.	DATE	REASON

PLOTS & CHECKS		
INT.	DATE	REASON

CHECKS		
INT.	DATE	REASON