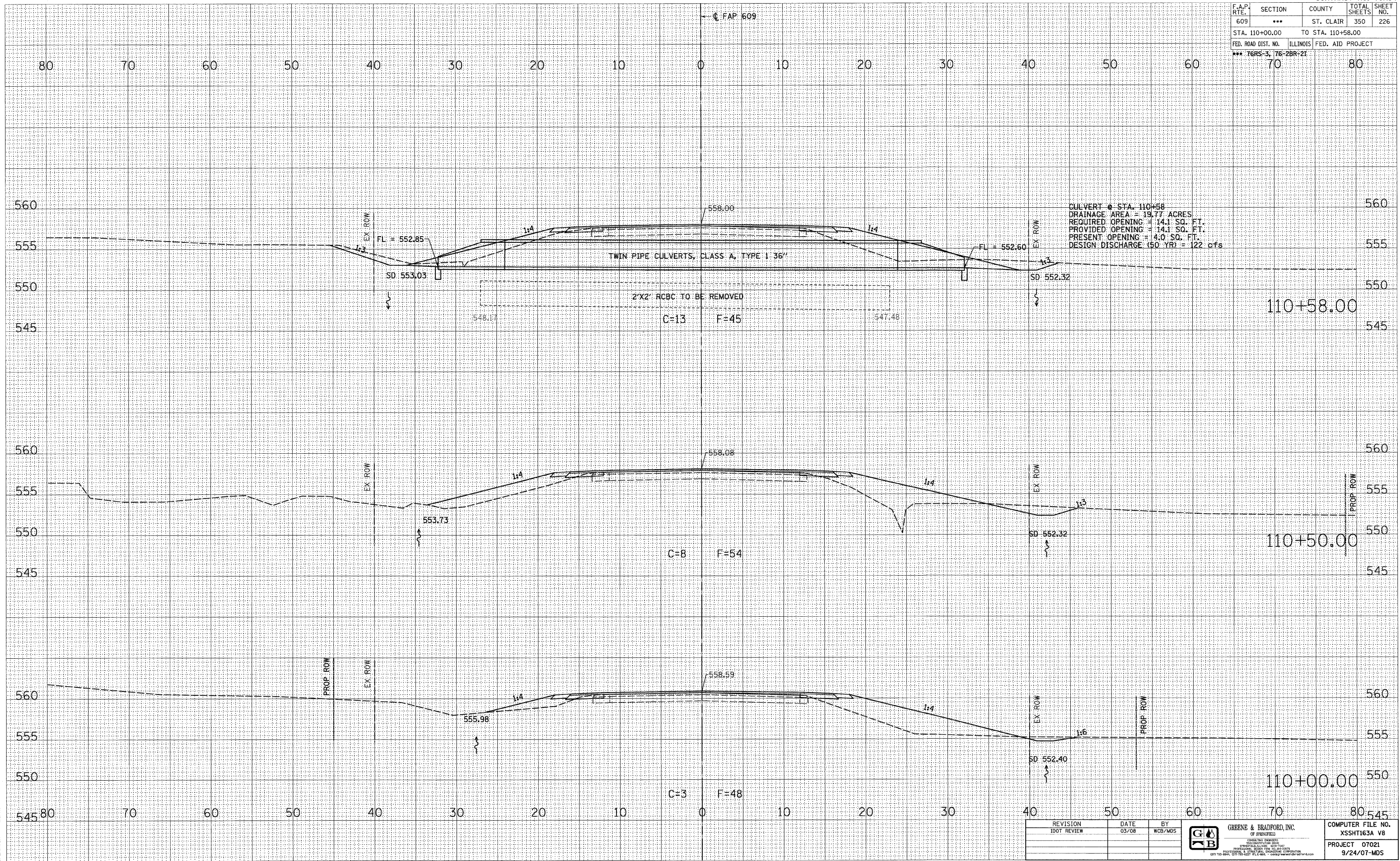


F.A.P. RTE	SECTION	COUNTY	TOTAL SHEETS	SHEET NO.
609	***	ST. CLAIR	350	226
STA. 110+00.00		TO STA. 110+58.00		
FED. ROAD DIST. NO.		ILLINOIS FED. AID PROJECT		
*** 76RS-3, 76-2BR-21				

DATE	BY
SURVEYED	PLOTTED
NO. _____	NO. _____
AREAS CHECKED	AREAS CHECKED

DATE	BY
SURVEYED	PLOTTED
NO. _____	NO. _____
AREAS CHECKED	AREAS CHECKED

PLOT DATE = 8/1/2008 4:29:43 PM
 FILE NAME = J:\2007\DRAWINGS\XSSHT163A.VB
 PLOT SCALE = 5/8" = 1' IN.
 MODEL = Default
 OPERATOR =



CULVERT @ STA. 110+58
 DRAINAGE AREA = 19.77 ACRES
 REQUIRED OPENING = 14.1 SQ. FT.
 PROVIDED OPENING = 14.1 SQ. FT.
 PRESENT OPENING = 4.0 SQ. FT.
 DESIGN DISCHARGE (50 YR) = 122 cfs

REVISION	DATE	BY
1	03/08	WCB/MDS

GREENE & BRADFORD, INC.
 OF SPRINGFIELD
 CONSULTING ENGINEERS
 1000 W. MONROE STREET
 SPRINGFIELD, ILLINOIS 62761-1000
 PROFESSIONAL ENGINEERING CORPORATION
 ILL. REG. NO. 0217-0001

COMPUTER FILE NO.
 XSSHT163A VB
 PROJECT 07021
 9/24/07-MDS

**MAINLINE CROSS SECTIONS - FAP 609 (IL RTE. 163) ST. CLAIR COUNTY
 STA. 110+00.00 TO STA. 110+58.00**