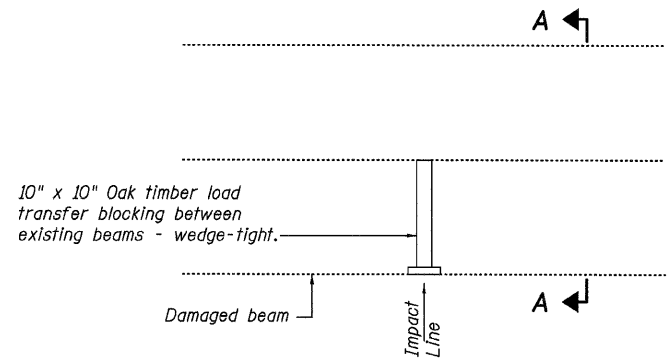


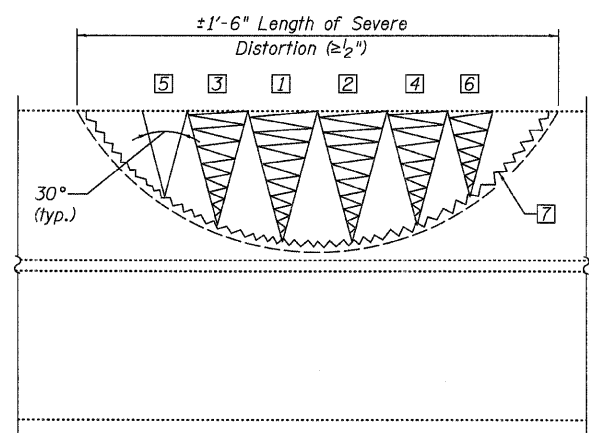
STATE OF ILLINOIS  
DEPARTMENT OF TRANSPORTATION

ROUTE NO.	SECTION	COUNTY	SHEET	OF SHEET	SHEET NO.
F.A.I.	-	ST. CLAIR	7	6	2
FED. ROAD DIST. NO. 7		ILLINOIS	FED. AID PROJECT-		

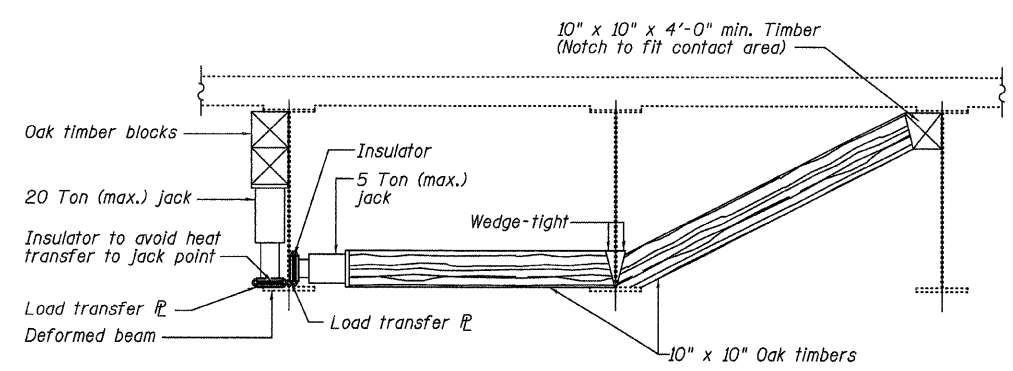
3 SHEETS



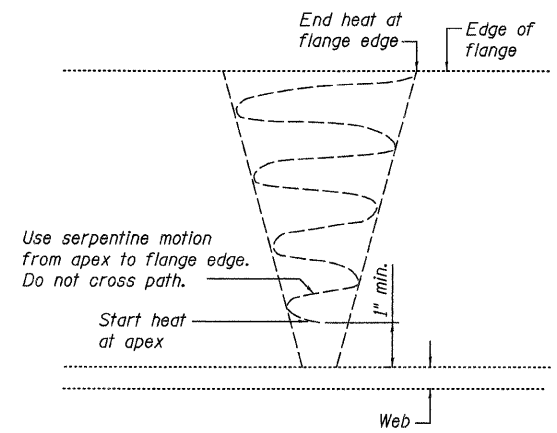
**PARTIAL PLAN**  
**SUGGESTED BEAM BLOCKING LOCATIONS**



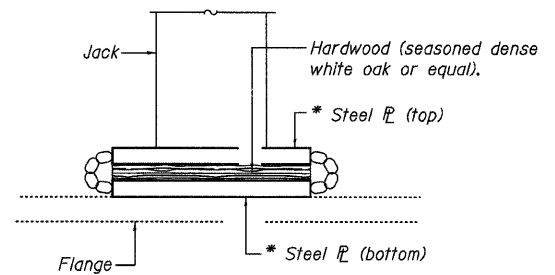
**BOTTOM FLANGE HEATING PATTERN**  
(Looking at bottom flange)



**SECTION A-A**



**TYPICAL HEAT PATTERN**



**SAMPLE INSULATOR**

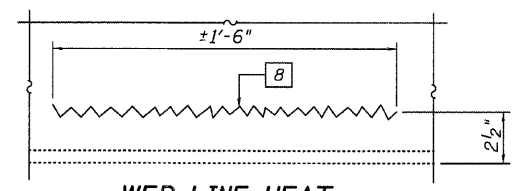
\* Top & bottom plates may be attached with cable or chain to aid handling.

DESIGNED	S.D.S.
CHECKED	C.W.C.
DRAWN	D.L.H.
CHECKED	S.D.S.

**WHKS & CO.**

ENGINEERS PLANNERS LAND SURVEYORS

MASON CITY, IOWA DUBUQUE, IOWA AMES, IOWA  
E. DUBUQUE, ILLINOIS SPRINGFIELD, ILLINOIS ROCHESTER, MINNESOTA



**WEB LINE HEAT**  
(Looking East)

**EXISTING DEFORMATION TO BE STRAIGHTENED**

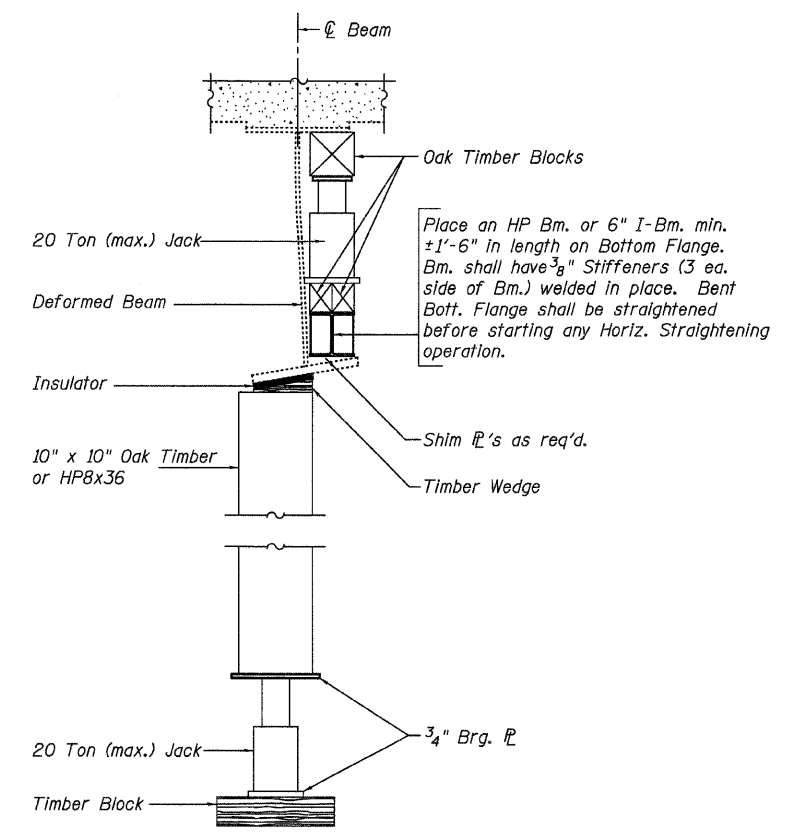
(Looking North)  
(Approximate max. deflections)  
Deflected length of beam to be straightened is approximately 4'-0".

**Notes:**

The initial jack loads applied prior to the application of heat shall be limited to 30 kips (vertical) and 4 kips (horizontal).  
The details shown on this sheet are for example purposes only. The final details shall be approved by the Department in accordance with the Special Provisions for "Beam Heat Straightening".

- \*\* 1 thru 6 "V" heat
- 7 Line heat on flange
- 8 Line heat on web

\*\* 6 patterns are shown for the example, but the actual number shall be based on the deformation size and severity. Patterns should be placed on greatest distortion, and patterns in a subsequent series should be offset.



**VERTICAL STRAIGHTENING DETAIL**

**BEAM HEAT STRAIGHTENING**  
10th STREET OVER I-64  
ST. CLAIR CO.  
S.N. 082-0150

Operator: dheberling Date: 9/9/2008 Filename: L:\Jobs\DOT BBS\6727 BBS Various\Drawings\Structure\082-0150.dgn