

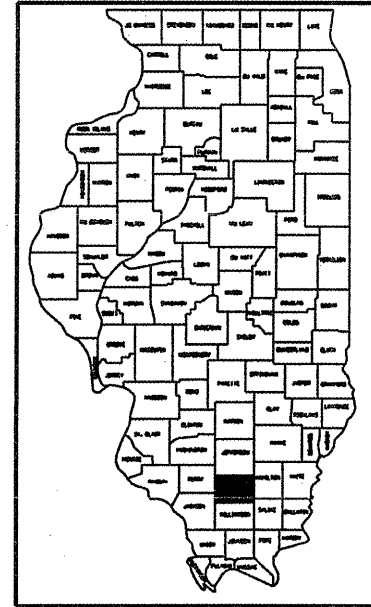
STATE OF ILLINOIS
 DEPARTMENT OF TRANSPORTATION
 DIVISION OF HIGHWAYS

**PROPOSED
 HIGHWAY PLANS
 DISTRICT NINE**

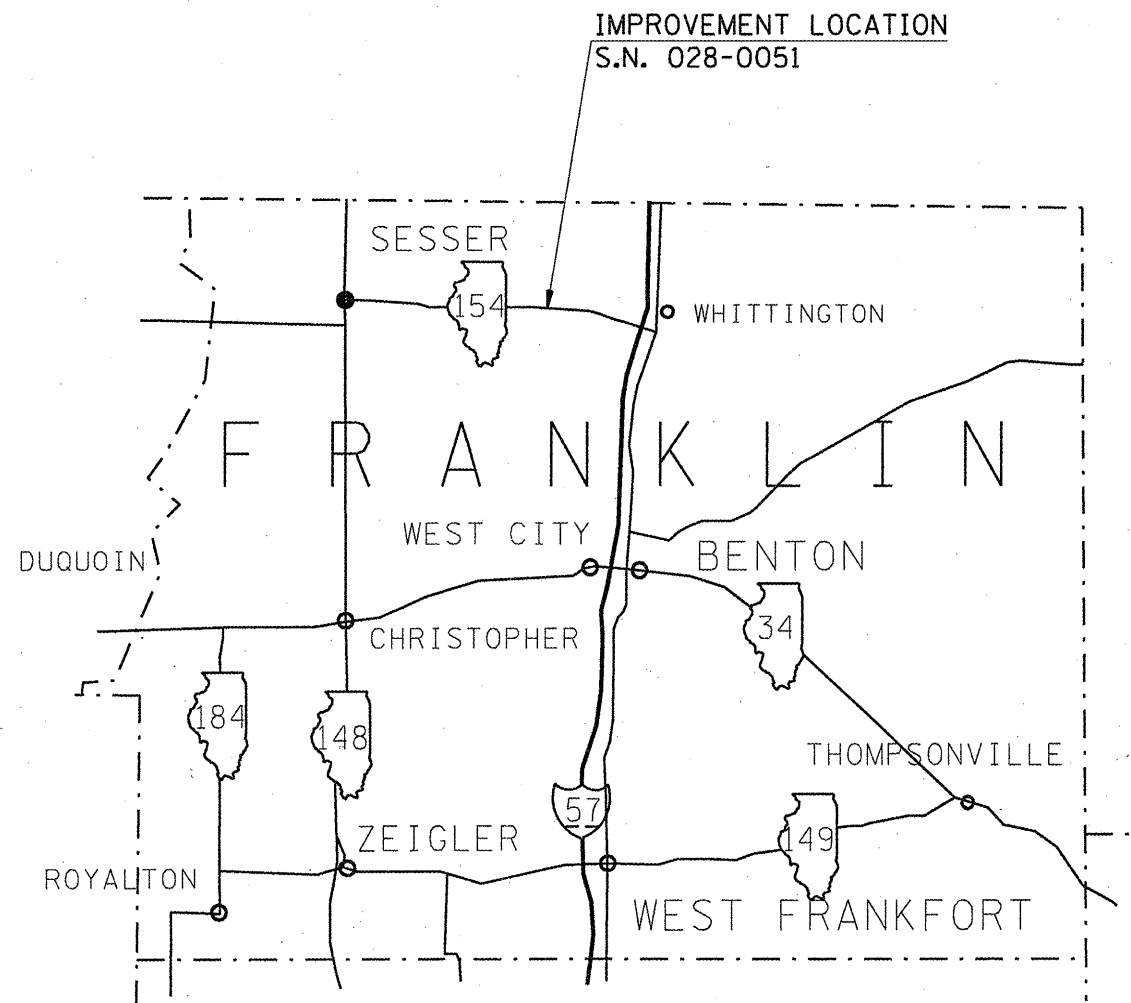
FAP ROUTE 845 (IL 154)
 SECTION D9 HOAN DETAIL REPAIR FY 09-1
 C-99-047-08
 FRANKLIN COUNTY

ROUTE NO.	SECTION	COUNTY	TOTAL SHEETS	SHEET NO.
FAP 845	•	FRANKLIN	5	1

*D9 HOAN DETAIL REPAIR FY09-1
 CONTRACT 78062



028-0051
 IL 154
 REND LAKE
 INVENTORY RATING HS 20.0
 OPERATING RATING HS 27.7
 ADT: 3500
 12% TRUCKS



MAP NOT TO SCALE

STATE OF ILLINOIS
 DEPARTMENT OF TRANSPORTATION
 DIVISION OF HIGHWAYS

SUBMITTED Aug 13 20 08
Mark C. Hamm
 DEPUTY DIRECTOR OF HIGHWAYS, REGION ENGINEER

October 3 20 08
Eric E. Hamm
 ENGINEER OF DESIGN AND ENVIRONMENT

October 3 20 08
Christine M. Reed
 DIRECTOR OF HIGHWAYS, CHIEF ENGINEER

**PRINTED BY THE AUTHORITY
 OF THE STATE OF ILLINOIS**

PROJECT ENGINEER: CASEY N. TECKENBROCK PHONE: (618) 549-2171
 SQUAD LEADER: RITA GAUTNEY CENTREX: 782-4554

PLAN DRAWINGS ARE NOT TO SCALE.

J.U.L.I.E.
 JOINT UTILITY LOCATION INFORMATION FOR EXCAVATION
 1-800-892-0123

CONTRACT NO. 78062

STATE OF ILLINOIS
DEPARTMENT OF TRANSPORTATION

ROUTE NO.	SECTION	COUNTY	TOTAL SHEETS	SHEET NO.
FAP 845		FRANKLIN	5	2
FED. ROAD DIST. NO. 7		ILLINOIS	FED. AID PROJECT:	
D9 HOAN DETAIL REPAIR FY09-1 CONTRACT 78062				

INDEX OF SHEETS

<u>SHEET</u>	<u>DESCRIPTION</u>
1	COVER SHEET
2	INDEX OF SHEETS, STANDARDS, SIGNATURES
3	SUMMARY OF QUANTITIES
4	GIRDER PLAN AND ELEVATION
5	STIFFENER MODIFICATION DETAILS

GENERAL NOTES

THE CONTRACTOR SHALL CONTAIN AND DISPOSE OF ALL DEBRIS, INCLUDING FRAGMENTS OF STEEL. NO WASTE OR DEBRIS SHALL BE ALLOWED TO ENTER THE LAKE WATER.

STANDARDS

701201-02	LANE CLOSURE, 2L, 2W, DAY ONLY, FOR SPEEDS >= 45 MPH
701901	TRAFFIC CONTROL DEVICES

Prepared By: *Kevin Grammer*
DISTRICT OPERATIONS ENGINEER

Examined By: *James Travis Egan*
DISTRICT LAND ACQUISITION ENGINEER

Examined By: *Carrie Nelson*
DISTRICT PROGRAM DEVELOPMENT ENGINEER

Examined By: *Joe Zandbergen*
DISTRICT STUDIES & PLANS ENGINEER

Examined By: *Joe Smother*
DISTRICT CONSTRUCTION ENGINEER

Examined By: *Bruce Pyles*
DISTRICT MATERIALS ENGINEER

Examined By: *Joe Smother*
DISTRICT PROJECT IMPLEMENTATION ENGINEER

Examined By: *Paul D. Carter*
ASSISTANT REGIONAL ENGINEER

Approved By: *Wayne Adams*
DEPUTY DIRECTOR OF HIGHWAYS, REGION 5 ENGINEER

DATE: *Aug 15* 2008

STATE OF ILLINOIS
DEPARTMENT OF TRANSPORTATION

ROUTE NO.	SECTION	COUNTY	TOTAL SHEETS	SHEET NO.
FAP 845	•	FRANKLIN	5	3
FED. ROAD DIST. NO. 7	ILLINOIS	FED. AID PROJECT:		
*D9 HOAN DETAIL REPAIR FY09-1 CONTRACT 78062				

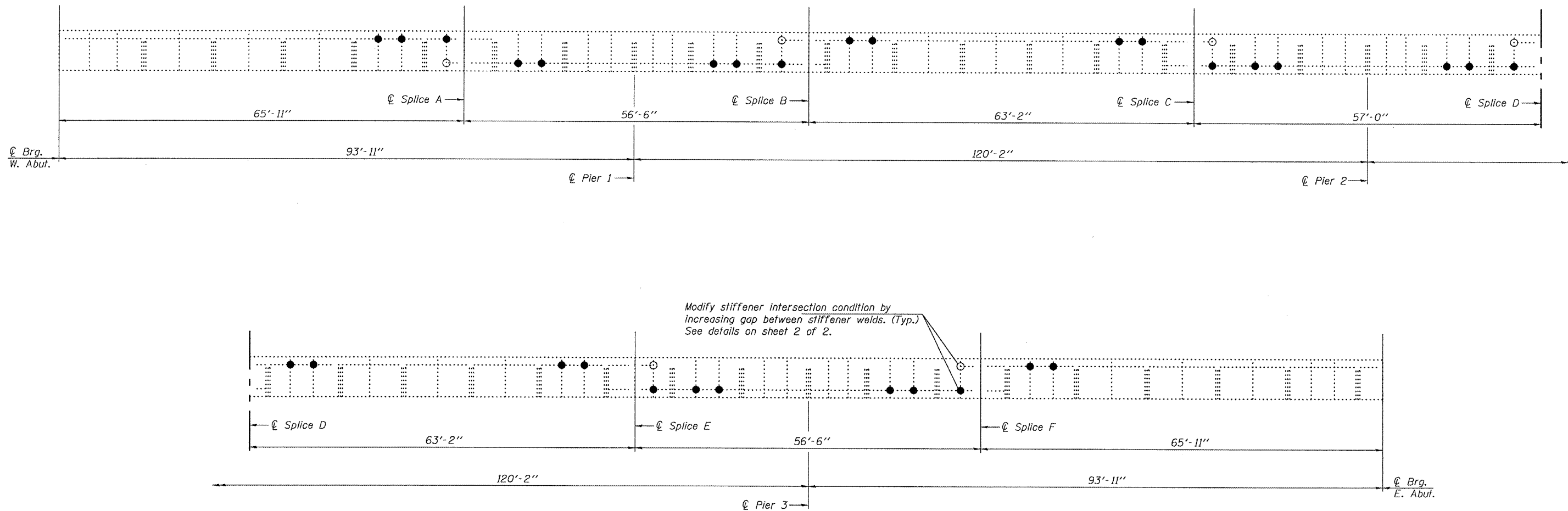
SUMMARY OF QUANTITIES

		100% STATE	
CONSTRUCTION TYPE CODE: SFTY - 2A		RURAL	
CODE NO.	ITEM DESCRIPTION	UNIT	QUANTITY
67000400	ENGINEER'S FIELD OFFICE, TYPE A	CAL MO	3
67100100	MOBILIZATION	L SUM	1
70100450	TRAFFIC CONTROL AND PROTECTION, STANDARD 701201	L SUM	1
X0322556	STIFFENER INTERSECTION MODIFICATION	EACH	132

STATE OF ILLINOIS
DEPARTMENT OF TRANSPORTATION

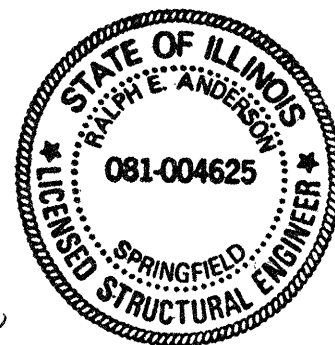
ROUTE NO.	SECTION	COUNTY	TOTAL SHEETS	SHEET NO.	SHEET NO. 1 2 SHEETS
FAP 845		FRANKLIN	54		
FED. ROAD DIST. NO. 7	ILLINOIS	FED. AID PROJECT			

Contract Number: -----



GIRDER ELEVATION SHOWING TYPICAL LOCATIONS OF FRACTURE CONTROL MODIFICATION

(Looking North)
(Girder 1 shown, Girder 2 similar by 180° rotation)
Work to be performed on outside face of each girder.
See sheet 2 of 2 for girder orientation



DESIGNED	Adrian Holloway
CHECKED	[Signature]
DRAWN	Steffen
CHECKED	ATH [Signature]

EXAMINED	[Signature]	OCTOBER 2, 2008
PASSED	[Signature]	

Expires: November 30, 2010

LEGEND

- 2 Locations
- ⊙ 1 Location

BILL OF MATERIAL

Item	Unit	Total
Stiffener Intersection Modification	Each	132

PLAN & ELEVATION
FAP 845 (IL 154)
FRANKLIN COUNTY
SN 028-0051

STATE OF ILLINOIS
DEPARTMENT OF TRANSPORTATION

ROUTE NO.	SECTION	COUNTY	TOTAL SHEETS	SHEET NO.
FAP 845		FRANKLIN	55	2
FED. ROAD DIST. NO. 7	ILLINOIS		FED. AID PROJECT	

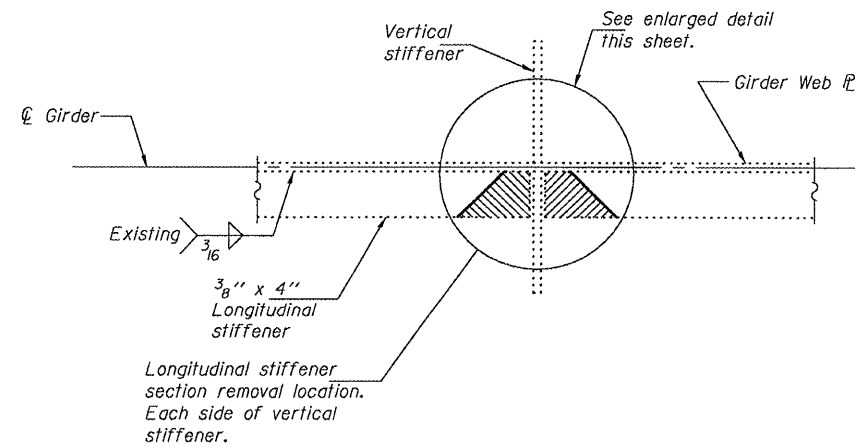
SHEET NO. 2

2 SHEETS

Contract Number: -----

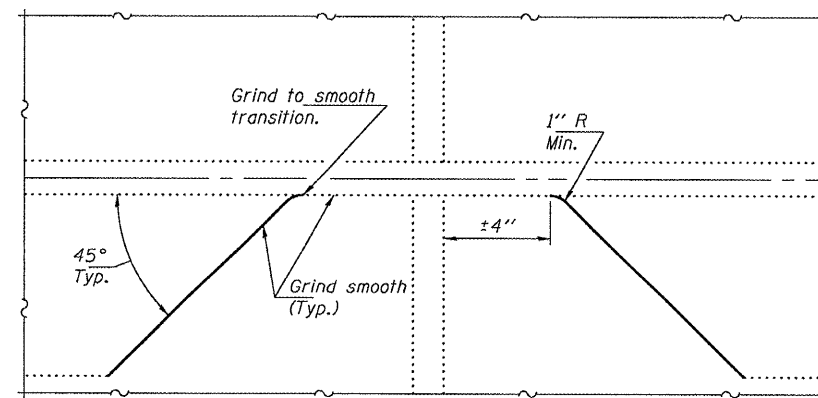
GIRDER #	SPLICE A				SPLICE B				SPLICE C				SPLICE D				SPLICE E				SPLICE F			
	TOP		BOTTOM		TOP		BOTTOM		TOP		BOTTOM		TOP		BOTTOM		TOP		BOTTOM		TOP		BOTTOM	
	LEFT	RIGHT	LEFT	RIGHT	LEFT	RIGHT	LEFT	RIGHT	LEFT	RIGHT	LEFT	RIGHT	LEFT	RIGHT	LEFT	RIGHT	LEFT	RIGHT	LEFT	RIGHT	LEFT	RIGHT	LEFT	RIGHT
* 1	6	0	1	4	1	4	6	0	4	1	0	6	1	4	6	0	4	1	0	6	1	4	6	0
* 2	4	1	0	6	1	4	6	0	4	1	0	6	1	4	6	0	4	1	0	6	0	6	4	1

* Looking North



REPAIR DETAIL

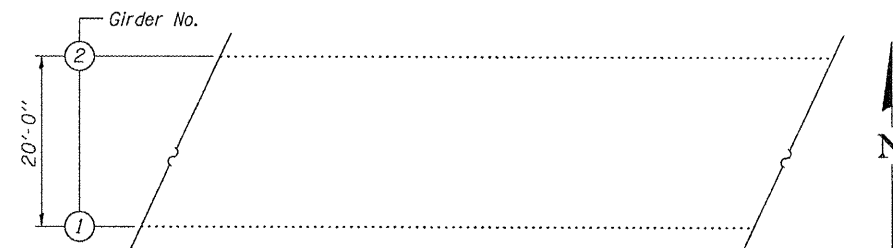
Hatched area indicates section removal.
(Showing 2 locations)



Procedure for Repair Detail:

1. Cut existing longitudinal stiffener $\pm 4''$ from face of vertical stiffener and along web as shown, with a 1" R (Min) at Web. The minimum distance from cut to face of web shall be the larger of $\frac{1}{4}''$ or web to plate weld size, with removal of remaining material by grinding as described below. The cut shall be made parallel to the web without angling the cut towards the web. Equipment and method of cutting shall be approved by the Engineer. Any method of removal to be used shall ensure that no damage is done to the existing web, vertical stiffener or welds connecting these elements. Cutting shall be done in a manner such that the paint on the opposite face of the web is not damaged. If damage occurs, the damaged area shall be repainted at the contractor's expense and procedures shall be modified to prevent damage at subsequent removal locations.
2. Remove material between cut and web by grinding and grind smooth at web surface and cut end of stiffener. Web R surfaces and cut end of stiffener shall have a roughness average (Ra) of 250 μ in. or less. Grinding equipment shall be approved by the Engineer. The grinding operation should not gouge the girder web R .
3. The web surface at the modification shall be inspected using dye penetrant or magnetic particle (MT) methods. Any cracks found shall be identified and reported to the Bureau of Bridges and Structures for further disposition.
4. The exposed steel surfaces shall be cleaned and painted using an aluminum epoxy mastic primer according to Article 506.05 of the Standard Specifications.

Each 4" stiffener removal area is to be considered as one retrofit. Accepted above referenced work will be paid for at the contract unit price each for Stiffener Intersection Modification, which price shall include all materials, equipment, labor, cleaning, testing and painting.



GIRDER ORIENTATION

DESIGNED	ATH
CHECKED	AJB
DRAWN	Steffen
CHECKED	ATH AJB

OCTOBER 2, 2008
 EXAMINED *Carl Proyer*
 ENGINEER OF STRUCTURAL SERVICES
 PASSED *Ralph E. Anderson*
 ENGINEER OF BRIDGES AND STRUCTURES

SIMD/REPS 03-02-2006

STIFFENER MODIFICATION DETAILS

FAP 845 (IL 154)
FRANKLIN COUNTY
SN 028-0051