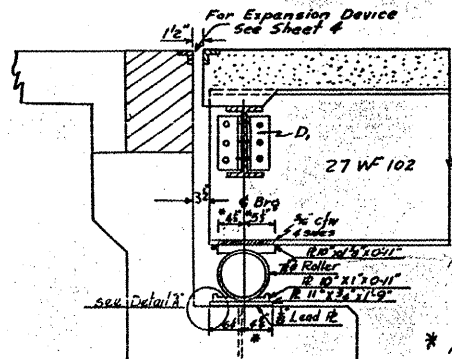
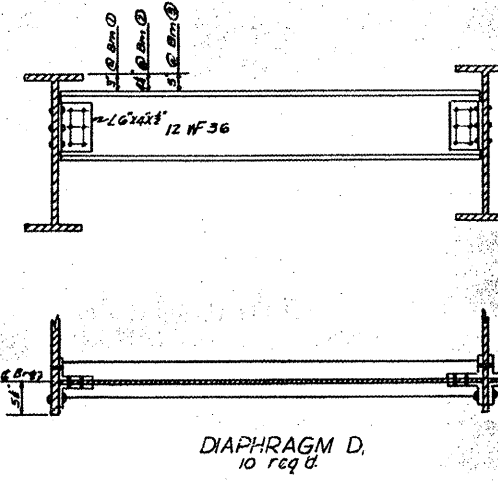
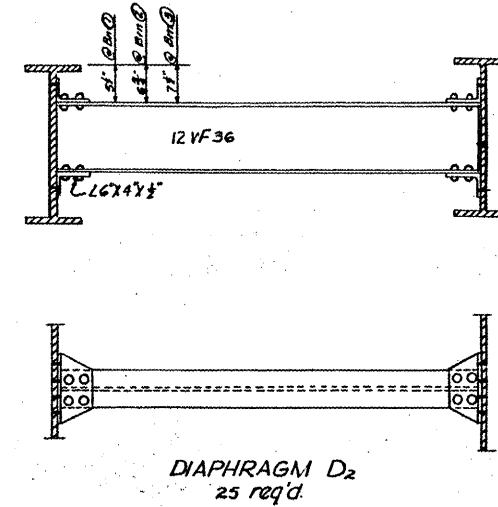
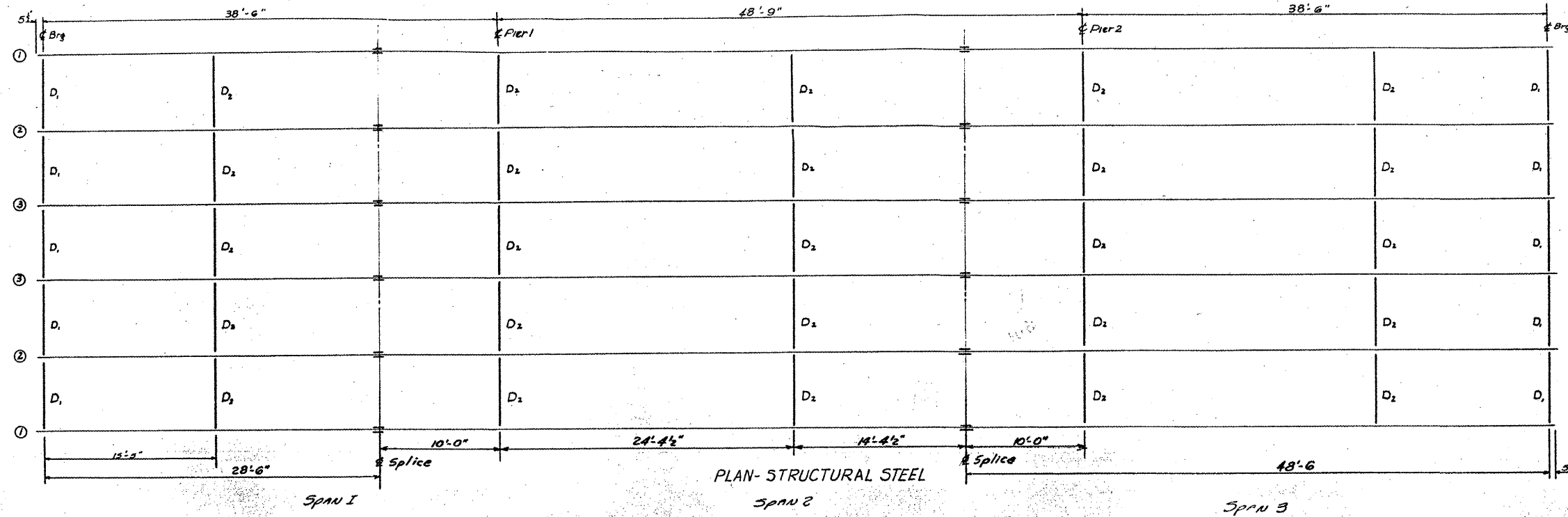
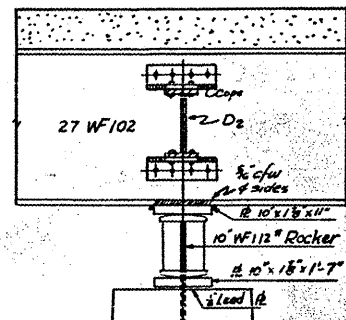


STATE OF ILLINOIS  
DEPARTMENT OF PUBLIC WORKS & BUILDINGS  
DIVISION OF HIGHWAYS

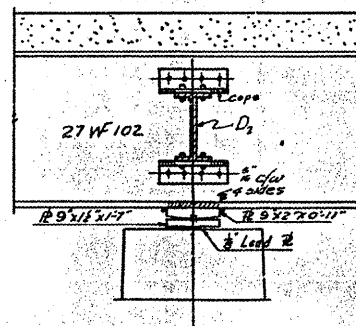
VARIOUS ROUTES  
D9 BRIDGE PAINTING FY 09-1  
VARIOUS COUNTIES  
CONTRACT 78093  
FOR INFORMATION ONLY  
SHEET 9 OF 31



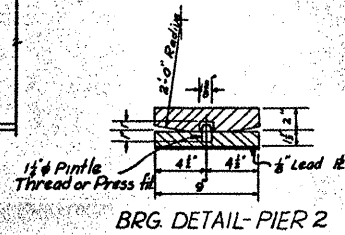
\* NOTE TO ERECTOR  
Increase each dimension by same amount if Abut. has moved or if temp. is above 50°. Decrease each by same amt if temp. is below 50° F.



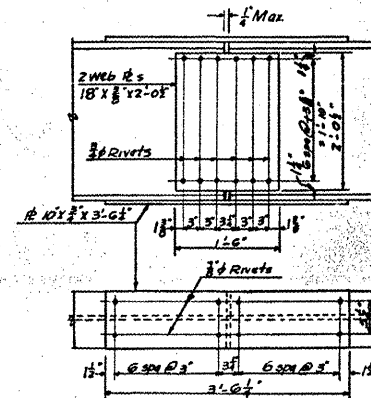
ELEVATION - PIER 1



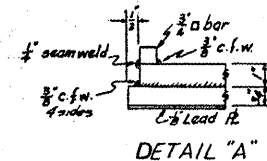
ELEVATION - PIER 2



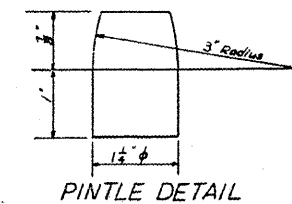
BRG DETAIL - PIER 2



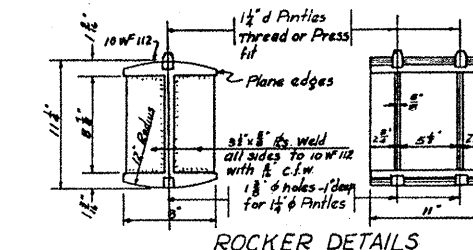
BEAM SPLICE DETAIL



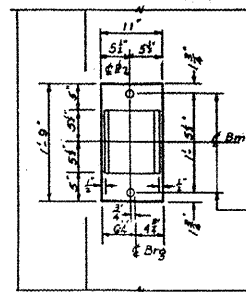
DETAIL "A"



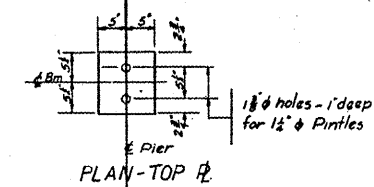
PINTLE DETAIL



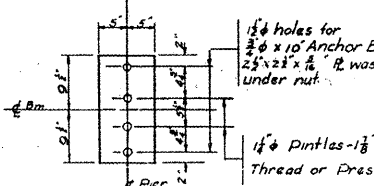
ROCKER DETAILS



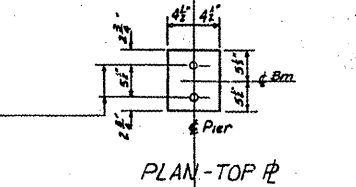
PLAN - BOTT. P<sub>1</sub>



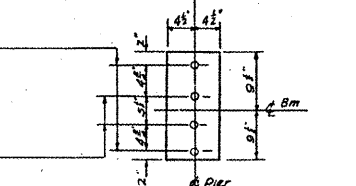
PLAN - TOP P<sub>1</sub>



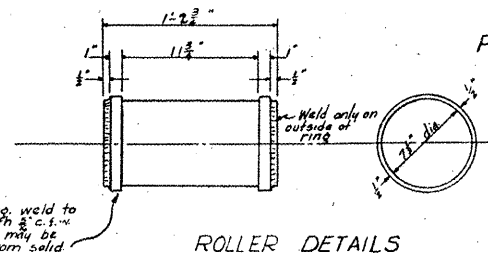
PLAN - BOTT. P<sub>1</sub>



PLAN - TOP P<sub>2</sub>



PLAN - BOTT. P<sub>2</sub>



ROLLER DETAILS

DESIGNED	<i>R. Anderson</i>
CHECKED	<i>James J. Manning</i>
DRAWN	<i>Rad.</i>
CHECKED	<i>James J. Manning</i>

EXAMINED	<i>W.E. Hanson</i>
PASSED	<i>E. J. ...</i>
APPROVED	<i>F. N. Barker</i>

Nov 24 1952

BRIDGE NO. 1  
F.A.R.T.E. 35 SEC II-B-1  
HARDIN COUNTY  
STA. 85+51.37

STRUCTURAL STEEL