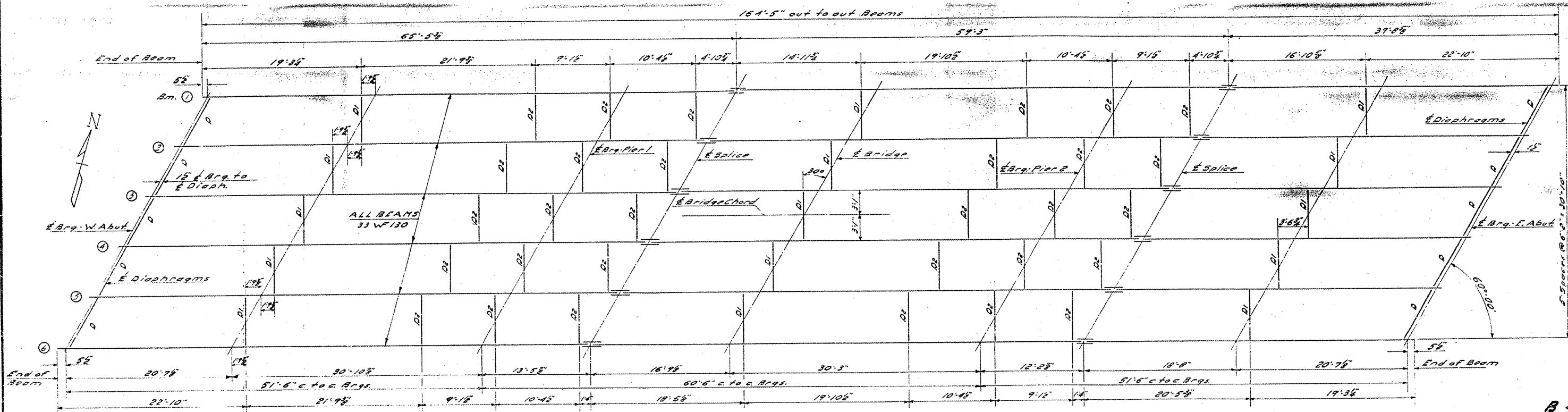
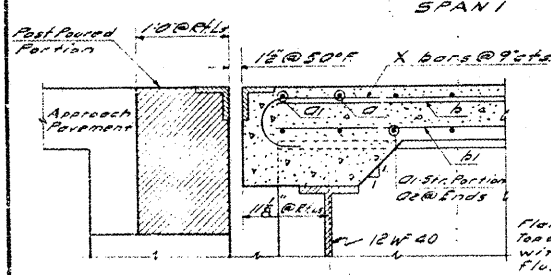


STATE OF ILLINOIS
DEPARTMENT OF PUBLIC WORKS & BUILDINGS
DIVISION OF HIGHWAYS

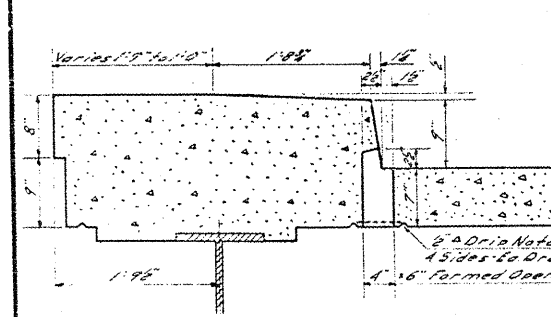
VARIOUS ROUTES
D9 BRIDGE PAINTING FY 09-1
VARIOUS COUNTIES
CONTRACT 78093
FOR INFORMATION ONLY
SHEET 15 OF 31



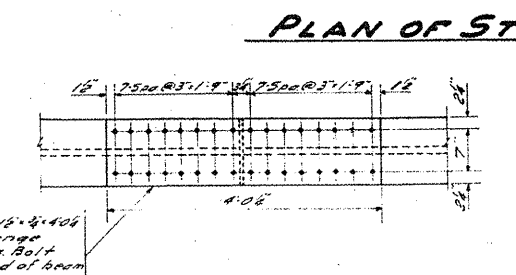
PLAN OF STRUCTURAL STEEL



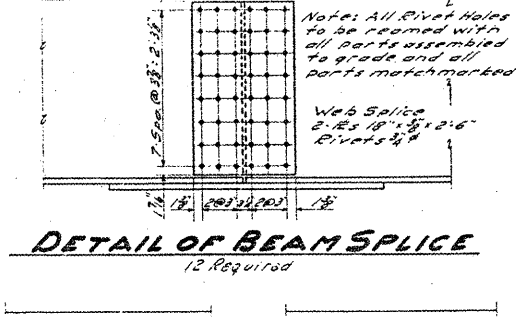
SECTION AT ABUTMENT



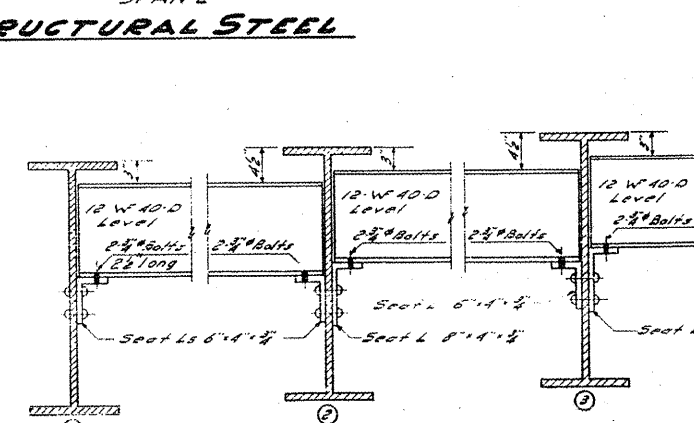
FLOOR DRAIN DETAIL



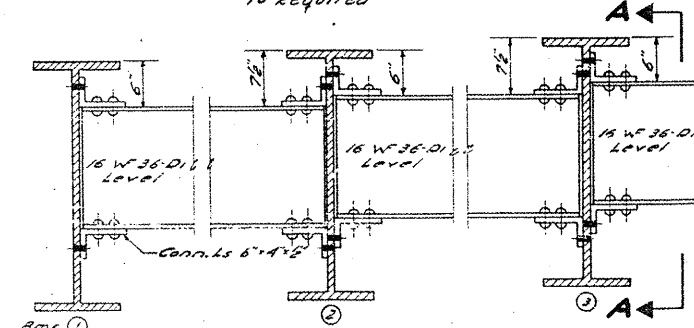
DETAIL OF BEAM SPlice



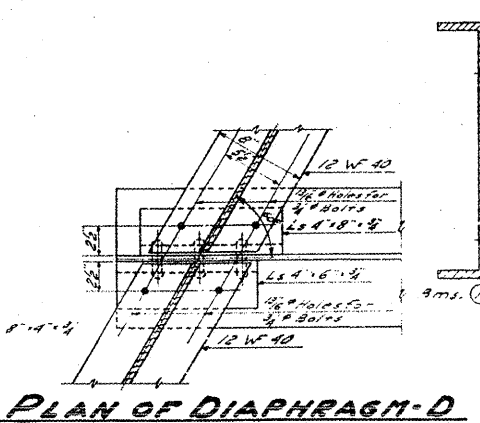
SECTION A-A SECTION B-B



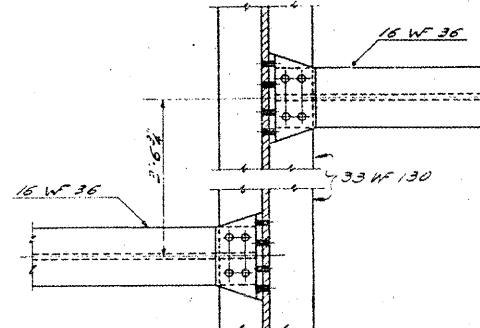
DETAIL OF DIAPHRAGM-D



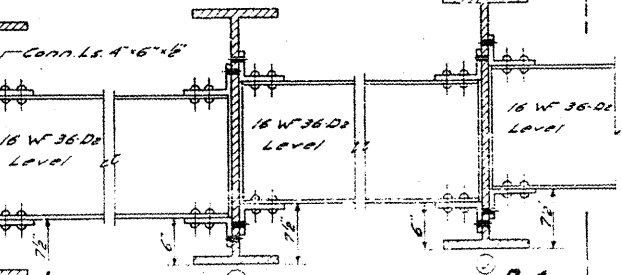
DETAIL OF DIAPHRAGM-D1



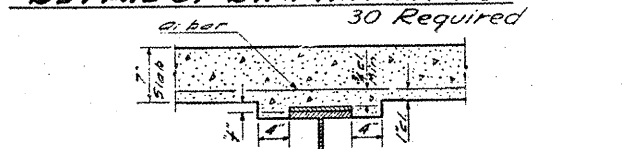
PLAN OF DIAPHRAGM-D



PLAN OF DIAPHRAGM-D1 & D2



DETAIL OF DIAPHRAGM-D2



METHOD OF DETERMINING FILLET HEIGHTS

STRUCTURAL STEEL
BRIDGE OVER
SEVEN MILE CREEK
BRIDGE NO. 2 F.A. ROUTE 16 (S.B.I.R.T. 15) SEC. 15-2B
JEFFERSON COUNTY
STATION 129+81

DESIGNED Joseph J. Rissing
CHECKED J. Kellogg
DRAWN E. W. Pulley
CHECKED J. J. R.

APRIL 24 19 56
EXAMINED W. M. Romine
PASSED C. L. Hart
APPROVED R. P. Bartleson
CHIEF HIGHWAY ENGINEER