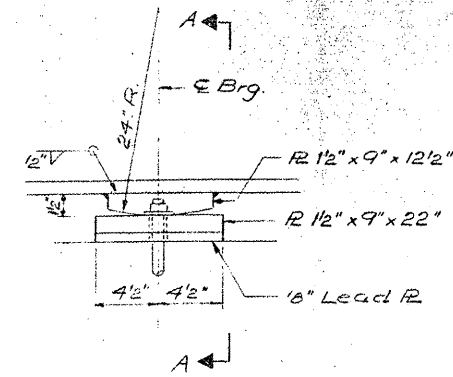


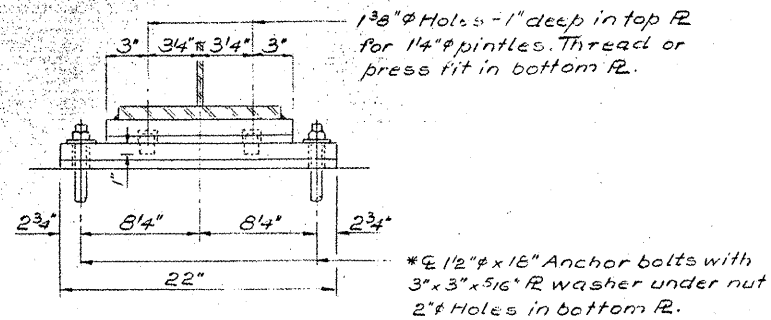
STATE OF ILLINOIS
DEPARTMENT OF TRANSPORTATION

VARIOUS ROUTES
D9 BRIDGE PAINTING FY 09-1
VARIOUS COUNTIES
CONTRACT 78093
FOR INFORMATION ONLY
SHEET 31 OF 31

2

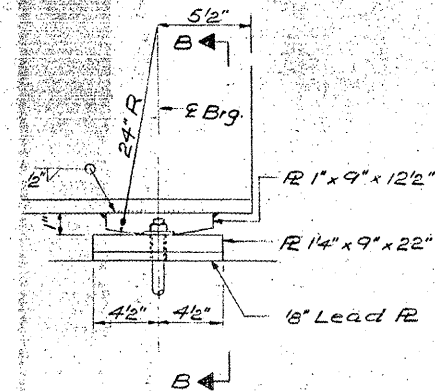


ELEVATION

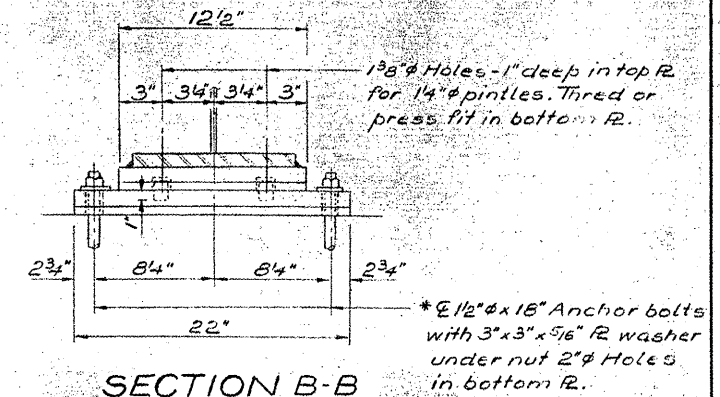


SECTION A-A

FIXED BEARING
Bent #5



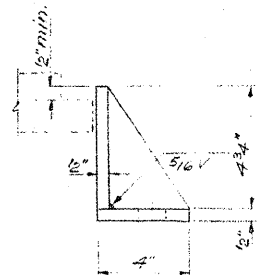
ELEVATION



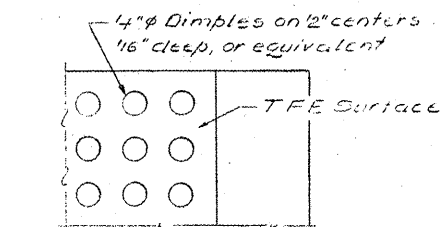
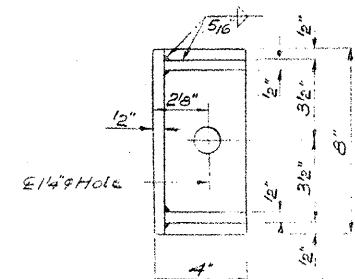
SECTION B-B

FIXED BEARING
East Abut

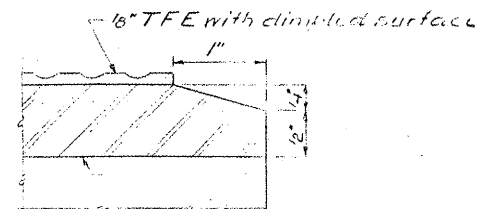
* Note: After girders have been erected holes at expansion bearings shall be drilled and anchor bolts grouted in place. Anchor bolts at fixed bearings may be built into the masonry.



SIDE RETAINER



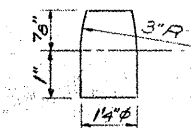
PLAN - TFE SURFACE



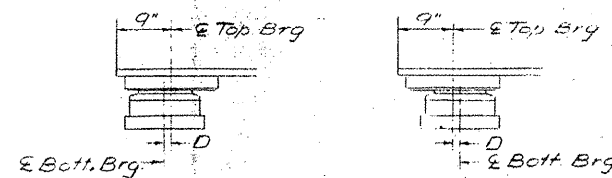
SECTION THRU TFE

Note: The 1/8" TFE sheet shall be bonded directly to the top steel plate with a two-component, medium viscosity epoxy resin, conforming to the requirements of the Federal Specification MMM-A-134, Type I. The bond agent shall be applied on the full area of the contact surface.

Bonding of 1/8" TFE sheet during vulcanizing process will be permitted provided the process and method of adjusting assembly height is approved by the Engineer.



PINTLE



BELOW 50°F (Move bott. brg. away from fixed brg.)
ABOVE 50°F (Move both brg. toward fixed brg.)

SETTING ANCHOR BOLTS AT EXP. BRG

D-16" per each 100' of expansion for every 15° temp. change from the normal temp. of 50°F.

DESIGNED	Stone & Meyer	EXAMINED	Jan 13 1981
CHECKED	James Brown	PASSED	
DRAWN	V.H.	APPROVED	
CHECKED	A.		