

INDEX OF SHEETS

- Sheet No. 1 Cover Sheet
- Sheet No. 2 Plan & Profile
- Sheet No. 3 Cross Section
- Sheet No. 4 Cross Section
- Sheet No. 5 General Plan & Elevation
- Sheet No. 6 Box Culvert Details
- Sheet No. 7 Name Plate

STANDARDS

280001-04	728001
720011	BLR 21-7
729001	BLR 22-5
701006-02	BLR 23-2
701301-02	BLR 26
701901	631011-04

SUMMARY OF QUANTITIES

CONSTRUCTION TYPE CODE X02B-2A	
QUANTITY	UNIT DESCRIPTION
20200100	263 Cu.Yds. Earth Excavation
20400800	703 Cu.Yds. Furnished Excavation
25000330	0.73 Acre Seeding, Class 6
25000400	66.0 Pound Nitrogen Fertilizer Nutrient
25000500	66.0 Pound Phosphorous Fertilizer Nutrient
25000600	66.0 Pound Potassium Fertilizer Nutrient
25100120	1.46 Ton Mulch, Method 2
28100707	70.0 Sq.Yds. Stone Dumped Riprap, Class A4
35101400	400 Ton Aggregate Base Course, Type B
50100100	1 Each Removal of Existing Structures
54003000	259.8 Cu.Yds. Concrete Box Culvert
50800105	35.860 Pound Reinforcement Bars
50800205	1.260 Pound Reinforcement Bars (Epoxy Coated)
51500100	1 Each Name Plate
28000300	4 Each Temporary Ditch Checks
54200229	30 Foot Pipe Culvert, Class D, Type 1, 24"
* 63000000	250 Foot Steel Plate Beam Guardrail, Type A
63200305	532 Foot Steel Plate Beam Guardrail Removal
* 63100045	2 Each Traffic Barrier Terminal, Type 2
* LR631020	2 Each Traffic Barrier Terminal, Type 1
67100100	1 LS Mobilization

* Specialty Items

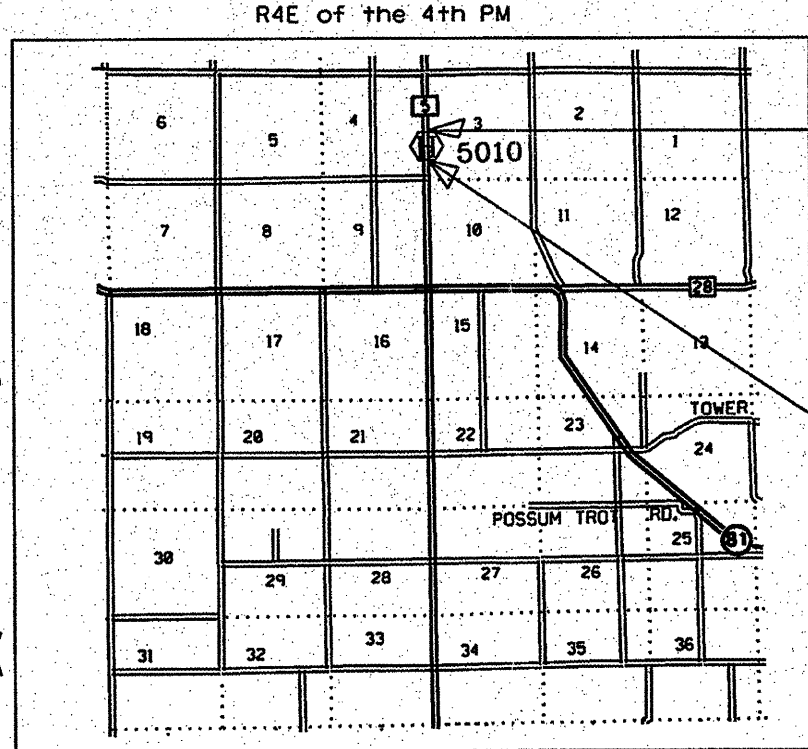
CALL J.U.L.I.E.
BEFORE YOU DIG
800-892-0123

ADT = 1250 (2008); 10% TRUCKS
MAJOR COLLECTOR
3R GUIDELINES

STATE OF ILLINOIS
DEPARTMENT OF TRANSPORTATION

PLANS FOR
PROPOSED LOCAL AGENCY IMPROVEMENT
FEDERAL AID BRRP PROJECT
HENRY COUNTY

COUNTY HIGHWAY DEPT. FAS RTE, 232
SECTION 06-00143-00-BR
PROJECT BRS-232(106) JOB NO C-92-115-08
CONTRACT 85440



LOCATION MAP

NET LENGTH OF SECTION = 441 FEET = 0.084 MILES

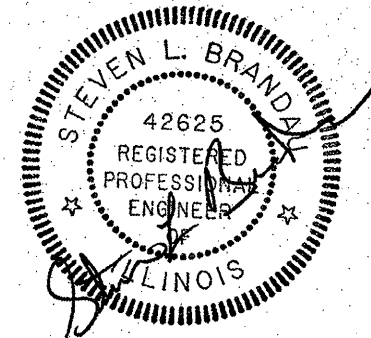
SCALES

PLAN	1" = 50'
PROFILE HORI.	1" = 50'
PROFILE VERT.	1" = 5'
CROSS SECTION	1" = 5'

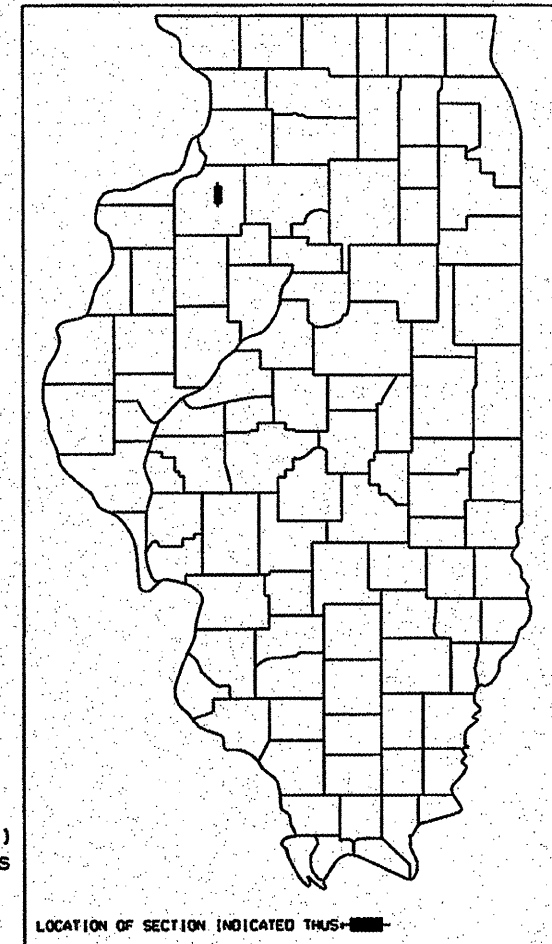
Section 06-00143-00-BR ends at Station 75+58.

Section includes the construction of a single cell (20' span x 10' high) concrete box culvert skewed 35 degrees Lt. ahead.

Section 06-00143-00-BR begins at Station 71+17.



FAS RTE	SECTION	COUNTY	TOTAL SHEETS	SHEET NO.
232	06-00143-00-BR	HENRY	7	1
P.R.O.J.E.C.T.		ILLINOIS PROJECT		



THESE PLANS WERE PREPARED BY ME OR BY THE FULL TIME MEMBERS OF MY STAFF.

Steven L. Brandau
STEVEN L. BRANDAU
P.E. 42625

STATE OF ILLINOIS DEPARTMENT OF TRANSPORTATION DIVISION OF HIGHWAYS	
APPROVED	<i>Steven L. Brandau</i> 9/5 2008 COUNTY ENGINEER
PASSED	<i>[Signature]</i> 8/8 2008 DISTRICT ENGINEER OF LOCAL ROADS & STREETS
RELEASING FOR BID BASED ON LIMITED REVIEW SEP 8 2008 DEPUTY DIRECTOR OF HIGHWAYS REGION 2 ENGINEER	