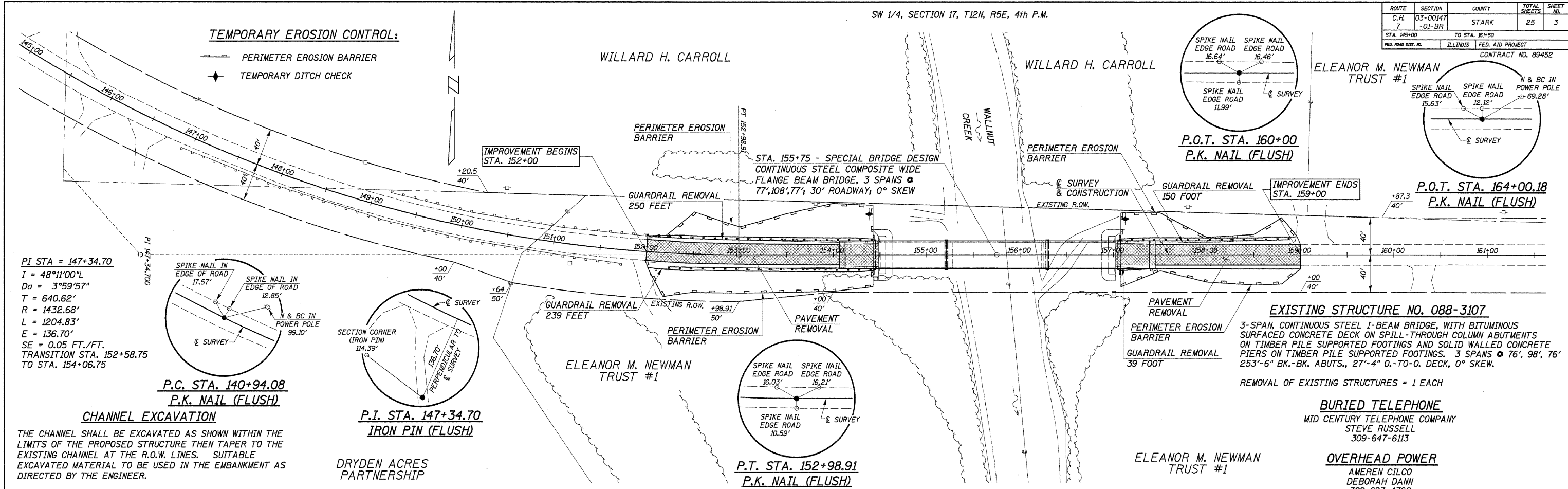
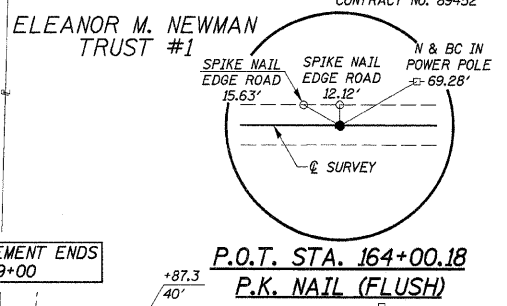
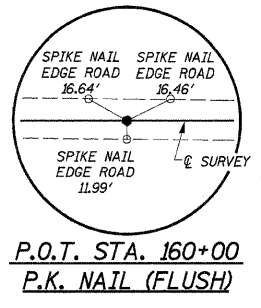
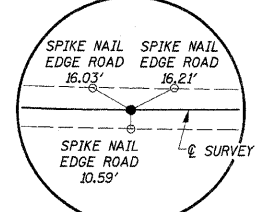
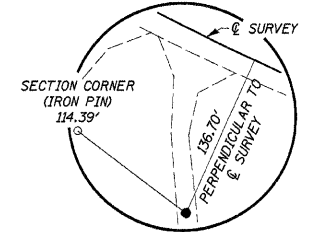
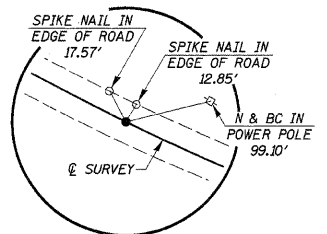


ROUTE	SECTION	COUNTY	TOTAL SHEETS	SHEET NO.
C.H. 7	03-00147 -01-BR	STARK	25	3
STA. 145+00	TO STA. 161+00	ILLINOIS FED. AID PROJECT		
CONTRACT NO. 89452				



PI STA = 147+34.70
 I = 48°11'00"L
 Da = 3°59'57"
 T = 640.62'
 R = 1432.68'
 L = 1204.83'
 E = 136.70'
 SE = 0.05 FT./FT.
 TRANSITION STA. 152+58.75
 TO STA. 154+06.75



CHANNEL EXCAVATION
 THE CHANNEL SHALL BE EXCAVATED AS SHOWN WITHIN THE LIMITS OF THE PROPOSED STRUCTURE THEN TAPER TO THE EXISTING CHANNEL AT THE R.O.W. LINES. SUITABLE EXCAVATED MATERIAL TO BE USED IN THE EMBANKMENT AS DIRECTED BY THE ENGINEER.
 CHANNEL EXCAVATION = 500 CU. YD.

EXISTING STRUCTURE NO. 088-3107
 3-SPAN, CONTINUOUS STEEL I-BEAM BRIDGE, WITH BITUMINOUS SURFACED CONCRETE DECK ON SPILL-THROUGH COLUMN ABUTMENTS ON TIMBER PILE SUPPORTED FOOTINGS AND SOLID WALLED CONCRETE PIERS ON TIMBER PILE SUPPORTED FOOTINGS. 3 SPANS @ 76', 98', 76' 253'-6" BK.-BK. ABUTS., 27'-4" O.-TO-O. DECK, 0° SKEW.
 REMOVAL OF EXISTING STRUCTURES = 1 EACH

BURIED TELEPHONE
 MID CENTURY TELEPHONE COMPANY
 STEVE RUSSELL
 309-647-6113

OVERHEAD POWER
 AMEREN CILCO
 DEBORAH DANN
 309-693-4762

