

ROUTE NO.	SECTION	COUNTY	TOTAL SHEETS	SHEET NO.
C.H. 7	03-00147	STARK	25	6
F.A.S. 376	-01-BR			
ROAD DIST.	ILLINOIS	FED. AID PROJECT		
			Sheet 2 of 17	CONTRACT NO. 89452

**GENERAL NOTES**

Fasteners shall be high strength bolts (AASHTO M 164, Type 3). Bolts  $\frac{7}{8}$ "  $\phi$ , open holes  $\frac{15}{16}$ "  $\phi$ , unless otherwise noted.

Calculated weight of Structural Steel = 258,810 Pound AASHTO M270 Grade 50W

All structural steel shall be AASHTO M 270 Grade 50W.

Structural steel shall only be painted for a distance equal to the depth of embedment into the concrete cap plus 3 in. Those areas shall be primed in the shop with a Department approved zinc rich primer. No field painting shall be required. All structural steel shall be cleaned as specified in the Special Provision for "Surface Preparation and Painting Requirements for Weathering Steel".

Anchor Bolts shall be set before bolting diaphragms over supports.

No field welding is permitted except as specified in the Contract documents.

Reinforcement bars shall conform to the requirements of ASTM A706 Gr 60 (IL Modified). See Special Provisions.

Layout of slope protection system may be varied in the field to suit ground conditions as directed by the Engineer.

The embankment configuration shown shall be the minimum embankment that must be constructed prior to construction of the abutments.

Bearing seat surfaces shall be constructed or adjusted to the designated elevations within a tolerance of  $\frac{1}{8}$  inch. Adjustment shall be made either by grinding the surface or by shimming the bearing. Two  $\frac{1}{8}$ " adjusting shims, of the dimension of the bottom bearing plate, shall be provided for each bearing in addition to all other plates or shims.

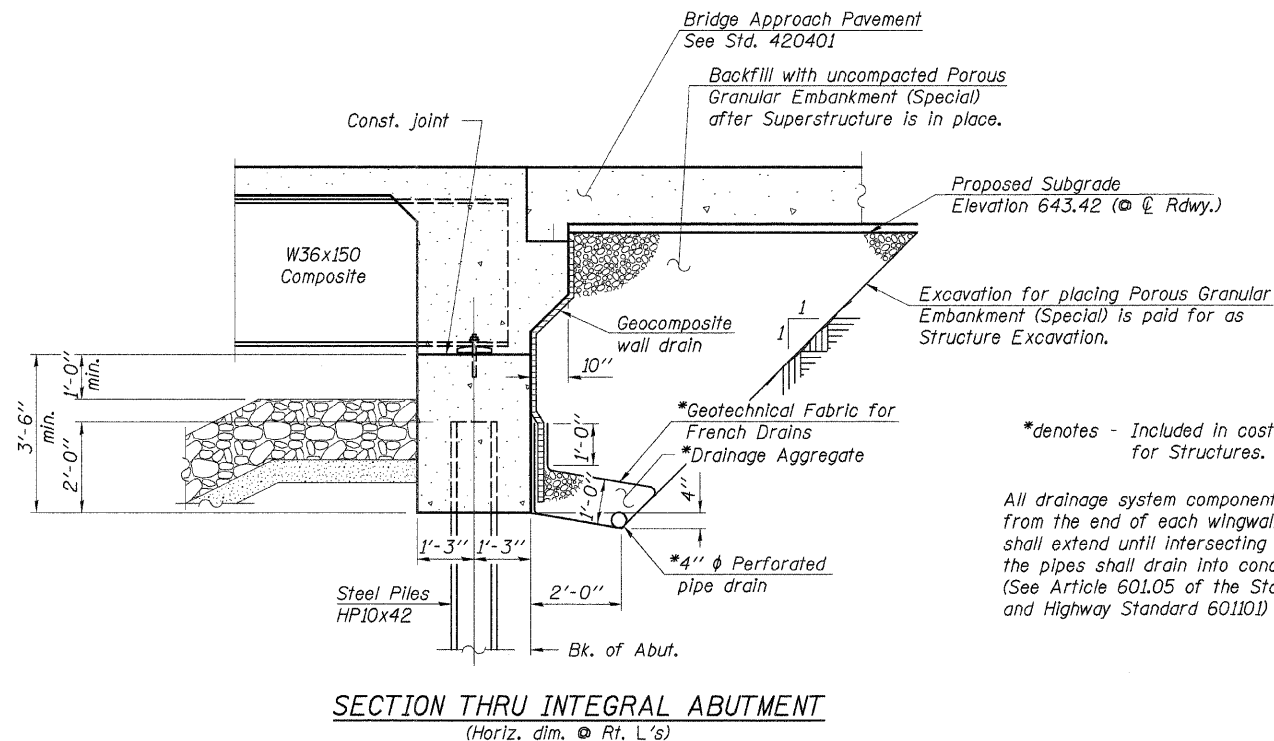
The existing structural steel coating contains lead. The Contractor shall take appropriate precautions to deal with the presence of lead on this project.

The contractor shall drive one steel HP10x42 test pile in a permanent location at each abutment & one steel HP12x53 test pile at each pier as directed by the Engineer before ordering the remainder of piles.

The Contractor shall drive test piles to 110 percent of the nominal required bearing specified in production locations at the substructures specified or approved by the Engineer before ordering the remainder of piles.

All exposed portions of abutments, wing walls, and piers shall receive a rubbed finish in accordance with Article 503.15 (b) of the standard specifications. Cost to be included in cost of Concrete Structures.

See Proposal Booklet for Soil Boring Data.



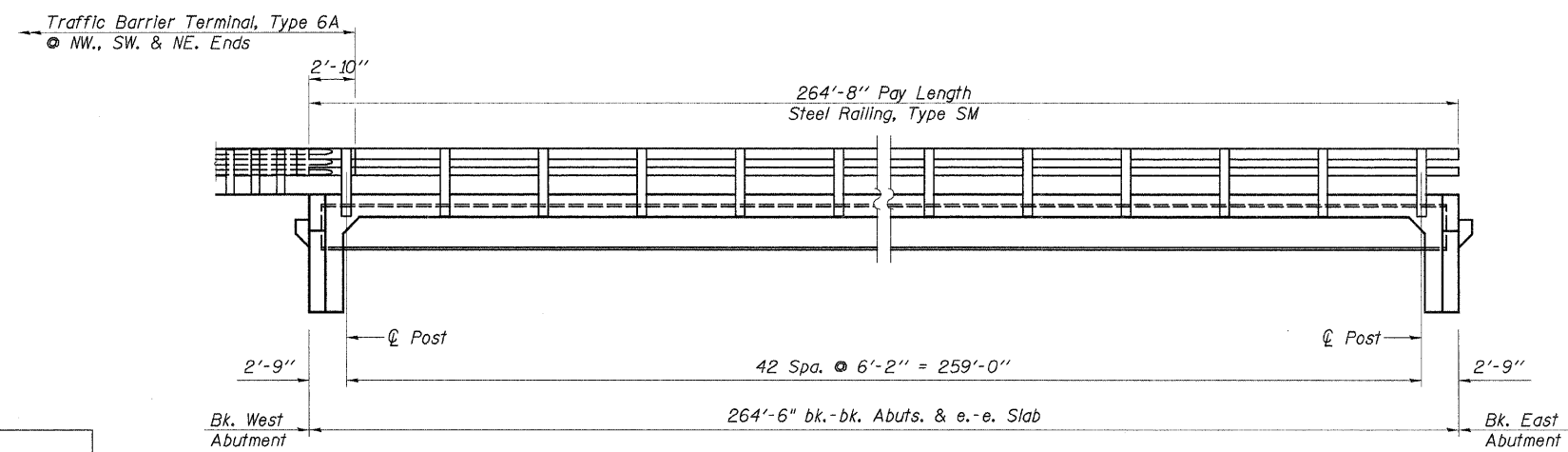
All drainage system components shall extend to 2'-0" from the end of each wingwall except an outlet pipe shall extend until intersecting with the side slopes the pipes shall drain into concrete headwalls\*. (See Article 601.05 of the Standard Specifications and Highway Standard 601101)

WALNUT CREEK  
BUILT 200\_ BY  
STARK COUNTY  
SEC. 03-00147-01-BR  
F.A. PROJ. BRS-376(109)  
STR. NO. 088-3407  
LOADING HS20

LETTERING FOR NAME PLATE  
See Std. 515001

**TOTAL BILL OF MATERIAL**

ITEM	UNIT	SUPER	SUB	TOTAL
Porous Granular Embankment (Special)	Cu. Yd.		104	104
Stone Riprap, Class A4	Ton		397	397
Filter Fabric	Sq. Yd.		491	491
Removal of Existing Structures	Each		1	1
Structure Excavation	Cu. Yd.		331	331
Concrete Structures	Cu. Yd.		98.0	98.0
Concrete Superstructure	Cu. Yd.	243.0		243.0
Bridge Deck Grooving	Sq. Yd.	882		882
Protective Coat	Sq. Yd.	964	14	978
Furnishing and Erecting Structural Steel	L. Sum	1		1
Stud Shear Connectors	Each	2,625		2,625
Reinforcement Bars, Epoxy Coated	Pound	55,020	8,860	63,880
Steel Railing, Type SM	Foot	530		530
Furnishing Steel Piles HP10x42	Foot		320	320
Furnishing Steel Piles HP12x53	Foot		588	588
Driving Piles	Foot		908	908
Test Piles Steel HP10x42	Each		2	2
Test Piles Steel HP12x53	Each		2	2
Concrete Encasement	Cu. Yd.		15.2	15.2
Name Plates	Each		1	1
Pipe Underdrains for Structures 4"	Foot		130	130
Geocomposite Wall Drain	Sq. Yd.		64	64
Underwater Structure Excavation Protection - Location 1	Each		1	1
Underwater Structure Excavation Protection - Location 2	Each		1	1
Bar Splicers	Each	60		60



DESIGNED	A.R.K.
CHECKED	F.J.S. & S.F.M.
DRAWN	S.A.P.
CHECKED	A.R.K. & F.J.S.

**GENERAL NOTES & BILL OF MATERIAL**  
SECTION 03-00147-01-BR  
COUNTY HIGHWAY 7  
STARK COUNTY  
STATION 155+75

4440 ASH GROVE  
SPRINGFIELD, IL 62711  
(217) 793-8600  
obsinc@insightbb.com

**FEHR-GRAHAM & ASSOCIATES, LLC**  
ENGINEERING AND SCIENCE CONSULTANTS  
PREPARED BY: ROBERTO L. ROCHELLE, P.E., MONROE, LA  
DATE: 01/02/08

JOB NO.: 46808  
FILE: 46808NOTES.DGN  
DATE: 01/02/08