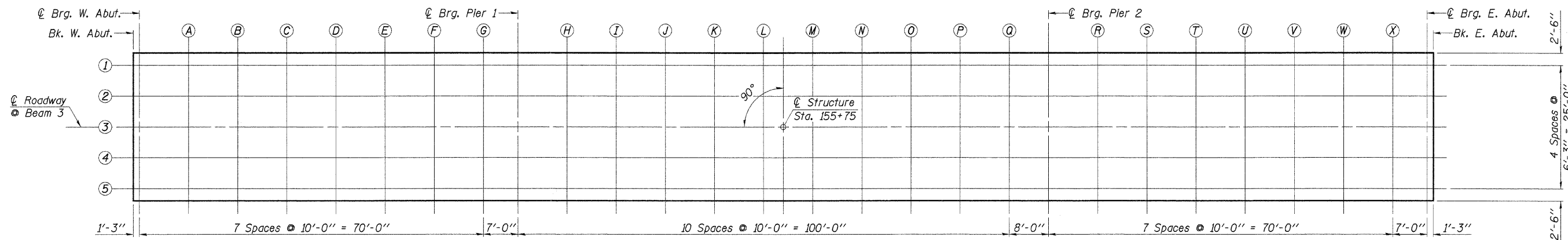
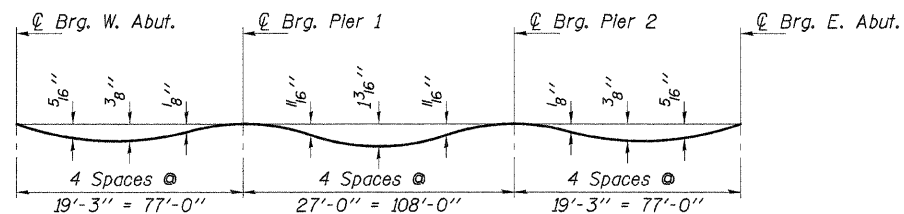


ROUTE NO.	SECTION	COUNTY	TOTAL SHEETS	SHEET NO.
C.H. 7	03-00147	STARK	25	7
F.A.S. 376	-01-BR			
ROAD DIST.	ILLINOIS	FED. AID PROJECT		
Sheet 3 of 17			CONTRACT NO. B9452	



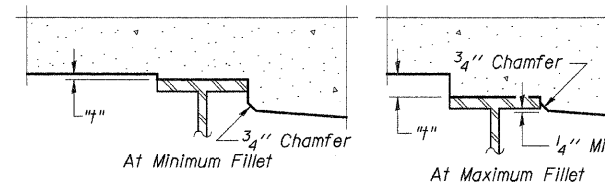
PLAN



DEAD LOAD DEFLECTION DIAGRAM

(Includes weight of concrete only.)

Note: The above deflections are not to be used in the field if the engineer is working from the grade elevations adjusted for dead load deflections as shown on Sheets 4 & 5 of 17.



To determine "t": After all structural steel has been erected, elevations of the top flanges of the beams shall be taken at intervals shown below. These elevations subtracted from the "Theoretical Grade Elevations Adjusted for Dead Load Deflection" shown on Sheets 4 & 5 of 17, minus slab thickness, equals the fillet heights "t" above top flange of beams.

FILLET HEIGHTS

DESIGNED	A.R.K.
CHECKED	F.J.S. & S.F.M.
DRAWN	S.A.P.
CHECKED	A.R.K. & F.J.S.

TOP OF SLAB ELEVATIONS

SECTION 03-00147-01-BR  
COUNTY HIGHWAY 7  
STARK COUNTY  
STATION 155+75

4440 ASH GROVE SPRINGFIELD, IL 62711 (217) 793-8600 oasinc@insightbb.com	FEHR-GRAHAM & ASSOCIATES, LLC ENGINEERING AND SCIENCE CONSULTANTS FREEPORT, IL ROCKFORD, IL ROCKFORD, IL SPRINGFIELD, IL	JOB NO.: 46808 FILE: 46808SLAB1.DGN DATE: 07/17/06
---	--	--