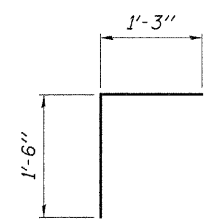
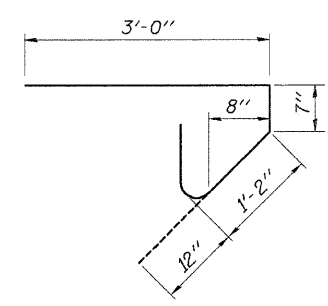


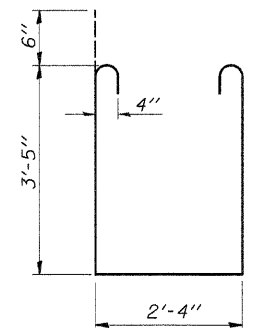
DIAPHRAGM ELEVATION AT ABUTMENT
(Dimensions @ Rt. L's @ Roadway)



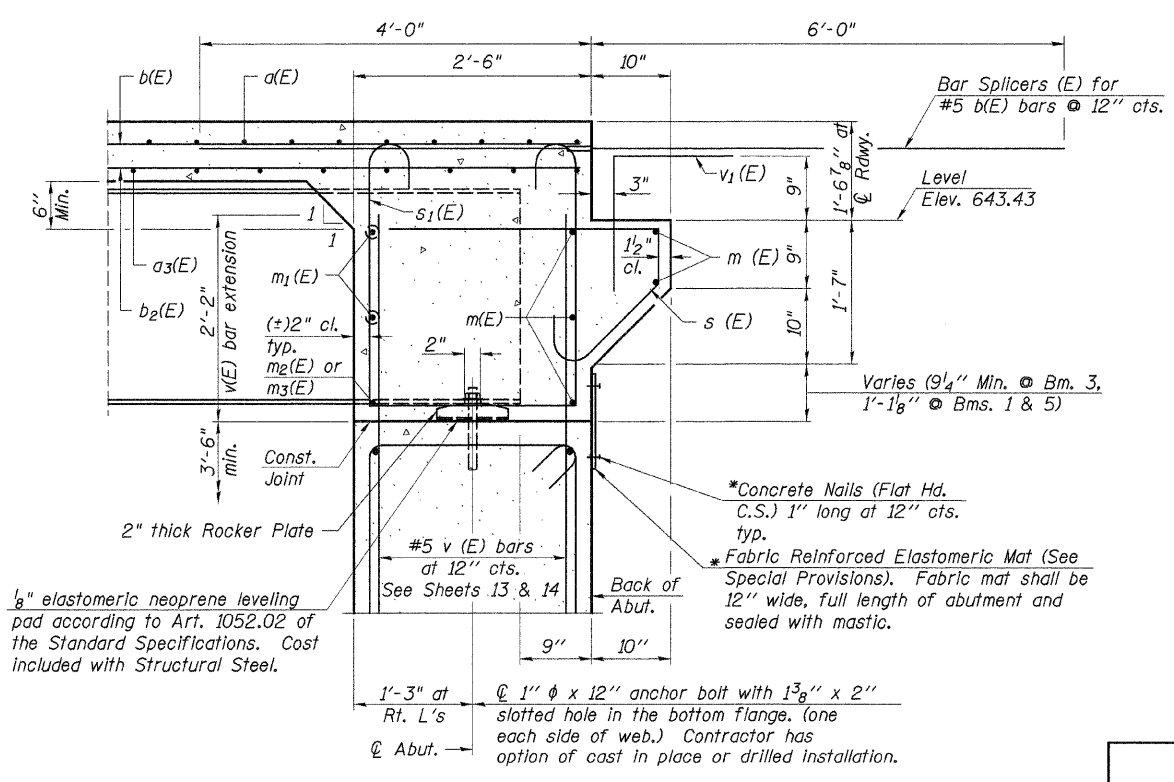
BAR v₁(E)



BAR s(E)



BAR s₁(E)



SECTION A-A

Dimensions at right angles to abutment, except as shown.
* Cost included with Concrete Superstructure.

MIN. BAR LAP
#6 bar = 2'-0"

Notes:
Reinforcement bars in diaphragm are billed with superstructure on sheet 6 of 17.
Concrete in diaphragm is included with Concrete Superstructure on sheet 6 of 17.
The s(E) and s₁(E) bars shall be placed parallel to the beams. Spacing for these bars shall be at right angles to the beams.
For anchor bolt details see sheet 12 of 17.

Work this sheet with Sheet 6 of 17.

DESIGNED	A.R.K.
CHECKED	F.J.S. & S.F.M.
DRAWN	S.A.P.
CHECKED	A.R.K. & F.J.S.
SI-DS2 9-01-03	

SUPERSTRUCTURE DETAILS
SECTION 03-00147-01-BR
COUNTY HIGHWAY 7
STARK COUNTY
STATION 155+75

4440 ASH GROVE SPRINGFIELD, IL 62711 (217) 793-8600 oasinc@insightbb.com	FEHR-GRAHAM & ASSOCIATES, LLC ENGINEERING AND SCIENCE CONSULTANTS PROFESSOR, ROCKFORD, IL; ROCKFORD, IL; MONROE, WI; SPRINGFIELD, IL	JOB NO.: 46808 FILE: 46808SUPER2.DGN DATE: 07/17/06
---	---	---