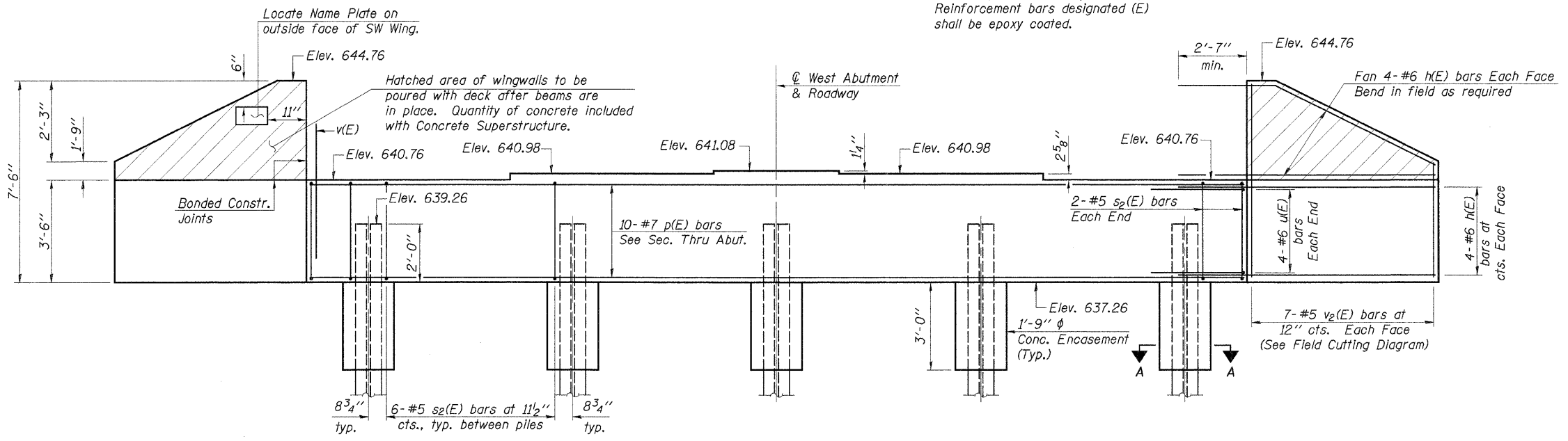
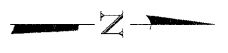


Notes: Four steps monolithically with cap.
Reinforcement bars designated (E)
shall be epoxy coated.



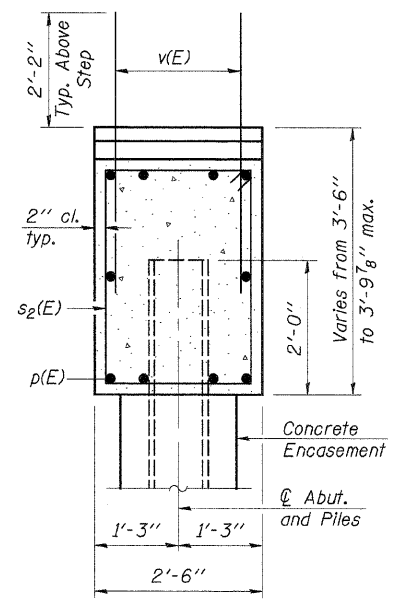
ELEVATION
(Looking West)



PILE DATA

Type..... Steel HP10x42
No. Req'd..... *5
Nominal Required Bearing..... 335 kips
Allowable Resistance Available..... 112 kips
Est. Length..... 38 Feet/Pile

*Includes 1 Test Pile to be driven in a permanent location at the West Abutment.
The steel H-piles shall be according to AASHTO M270 Grade 50.

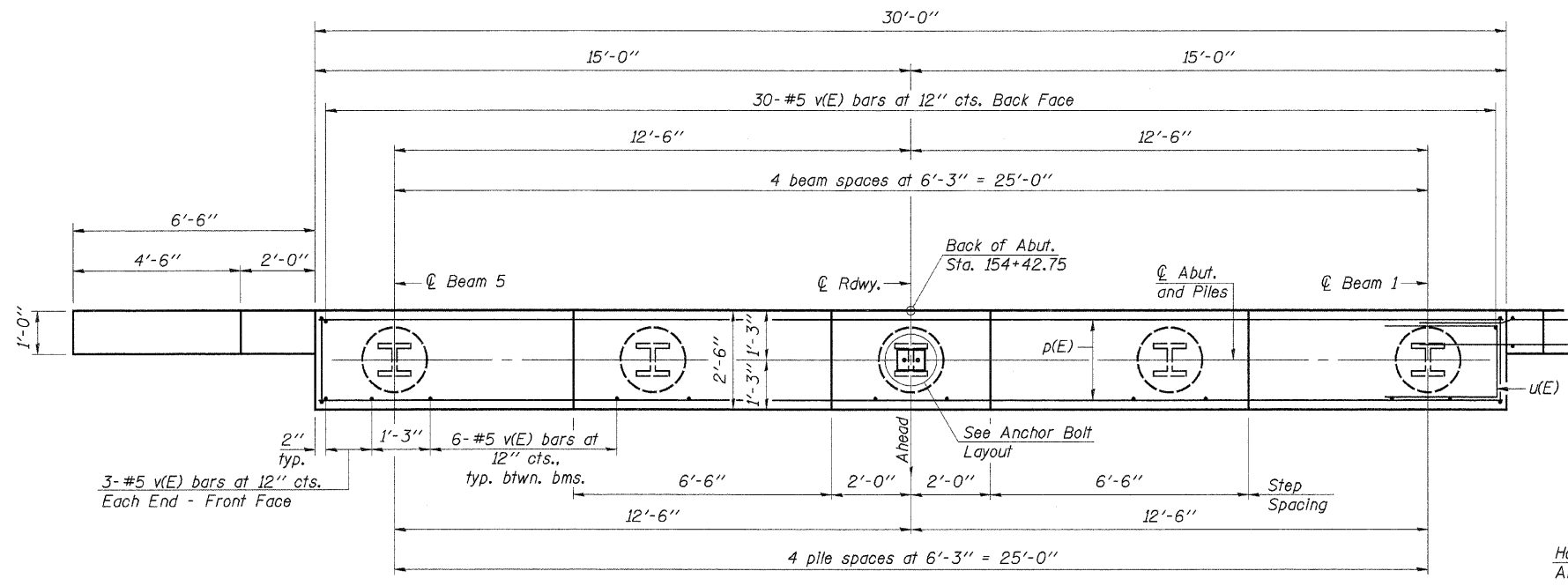


SEC. THRU ABUT.

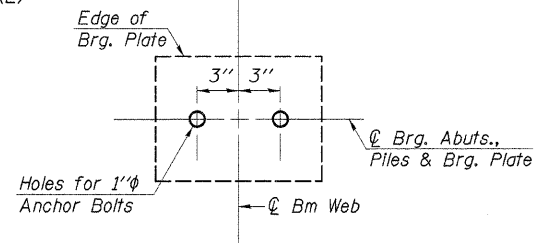
BILL OF MATERIAL

Bar	No.	Size	Length	Shape
h(E)	32	#6	8'-11"	—
p(E)	10	#7	29'-8"	—
s2(E)	28	#5	11'-7"	□
u(E)	8	#6	12'-1"	—
v(E)	60	#5	4'-4"	—
v2(E)	14	#5	12'-3"	—
Concrete Structures		Cu. Yd.	11.8	
Reinforcement Bars, Epoxy Coated		Pound	1,970	
Structure Excavation		Cu. Yd.	125	
Name Plates		Each	1	
Steel Piles HP10x42		Foot	152	
Test Pile Steel HP10x42		Each	1	
Concrete Encasement		Cu. Yd.	1.3	
Protective Coat		Sq. Yd.	7	
Porous Granular Embankment (Special)		Cu. Yd.	52	
Geocomposite Wall Drain		Sq. Yd.	32	
Pipe Underdrains for Structures 4"		Foot	65	

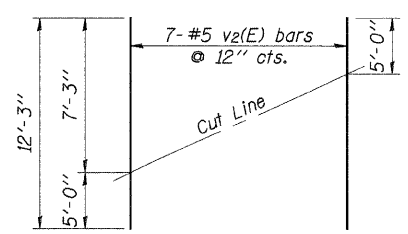
See Sheet 2 of 17 for Abutment Drainage Details.



PLAN

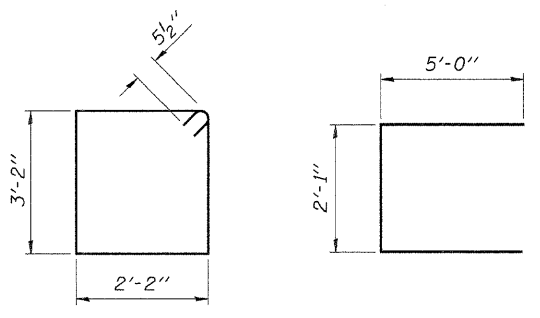


ANCHOR BOLT LAYOUT



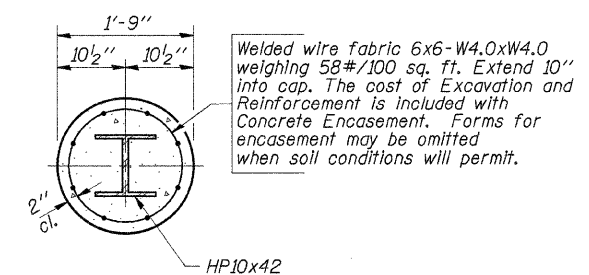
FIELD CUTTING DIAGRAM

Order v2(E) full length. Cut as shown and use remainder of bars in opposite face.



BAR s2(E)

BAR u(E)



SECTION A-A

DESIGNED	A.R.K.
CHECKED	F.J.S. & S.F.M.
DRAWN	S.A.P.
CHECKED	A.R.K. & F.J.S.
AI-0	9-01-03

WEST ABUTMENT
SECTION 03-00147-01-BR
COUNTY HIGHWAY 7
STARK COUNTY
STATION 155+75

4440 ASH GROVE SPRINGFIELD, IL 62711 (217) 793-8800 oasinc@insightbb.com	FEHR-GRAHAM & ASSOCIATES, LLC ENGINEERING AND SCIENCE CONSULTANTS FRESNO, IL, ROCKFORD, IL, ROCKFORD, IL, MORRIS, IL, SPRINGFIELD, IL	JOB NO.: 46808 FILE: 46808ABUT1.DGN DATE: 10/04/07
---	--	--