

FAP RTE	SECTION	COUNTY	TOTAL SHEETS	SHEET NO.
816	6RS-1	DOUGLAS	176	1
FED. ROAD DHT. NO.	ILLINOIS	FED. AID PROJECT		
D-95-006-95				

STATE OF ILLINOIS
DEPARTMENT OF TRANSPORTATION

DIVISION OF HIGHWAYS

PLANS FOR PROPOSED
FEDERAL AID HIGHWAY

FAP ROUTE 816 (ATWOOD-ARTHUR ROAD)
SECTION 6RS-1 & (6BR)BR

PROJECT TASK 09-24-01
RESURFACING
DOUGLAS COUNTY
C-95-006-95

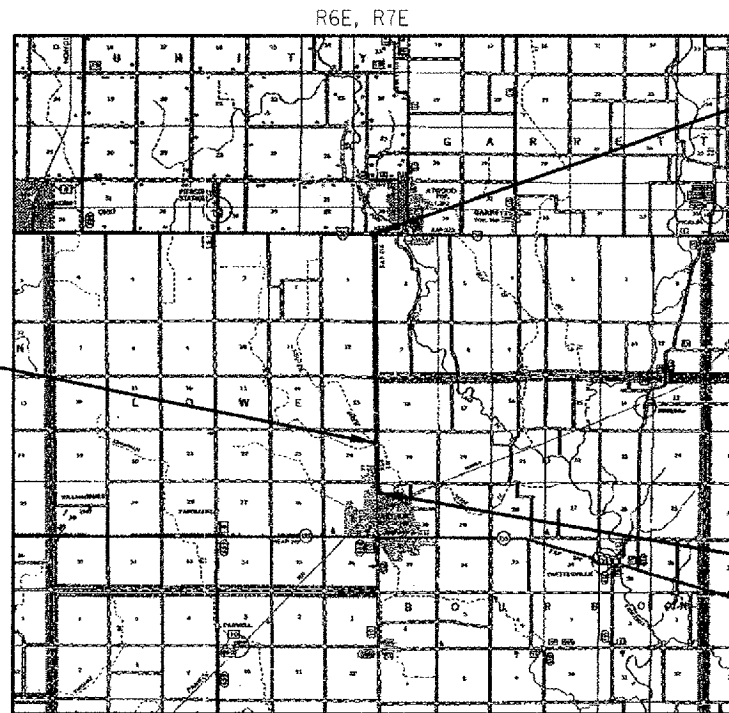
FOR INDEX OF SHEETS, SEE SHEET NO. 2

DESIGN DESIGNATION: N.A.

MINOR ARTERIAL
2008ADT = 3100
2028ADT = 3250
PV = 88.7%
SU = 7.7%
MU = 3.6%
DESIGN SPEED 60mph



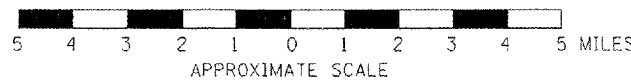
BRIDGE REPLACEMENT
STA 144+61.00
SN 021-003380
SN 021-2025 (PR)
3 @ 12' x 12' x 56' PRCBC



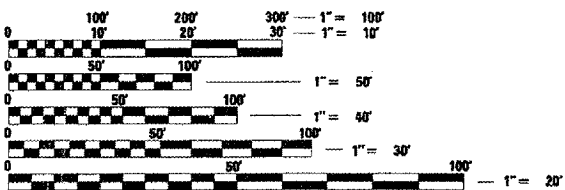
PROJECT ENDS:
STA 349+91.50

PROJECT BEGINS:
STA 100+54

LOCATION MAP



GROSS LENGTH = 24937.50 FT. = 4.723 MILES
NET LENGTH = 24937.50 FT. = 4.723 MILES



FULL SIZE PLANS HAVE BEEN PREPARED USING STANDARD ENGINEERING SCALES. REDUCED SIZED PLANS WILL NOT CONFORM TO STANDARD SCALES. IN MAKING MEASUREMENTS ON REDUCED PLANS, THE ABOVE SCALES MAY BE USED.

FOR UNDERGROUND UTILITY LOCATIONS IN LOWE, GARRETT & BOURBON TOWNSHIPS CALL J.U.L.I.E. TOLL FREE 1-800-892-0123

PRINTED BY THE AUTHORITY OF THE STATE OF ILLINOIS

STATE OF ILLINOIS
DEPARTMENT OF TRANSPORTATION
DIVISION OF HIGHWAYS

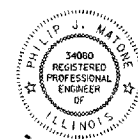
SUBMITTED 8/19 20 08

Joseph E. Gowen
DEPUTY DIRECTOR OF HIGHWAYS, REGION ENGINEER

October 3, 20 08
Eric E. Harned
ENGINEER OF DESIGN AND ENVIRONMENT

October 3, 20 08
Christine M. Reed
DIRECTOR OF HIGHWAYS, CHIEF ENGINEER

PRINTED BY THE AUTHORITY
OF THE STATE OF ILLINOIS



Phillip Matone 4/30/04
SIGNATURE

EXPIRATION DATE NOV. 30, 2005

CONTRACT NO. 90711