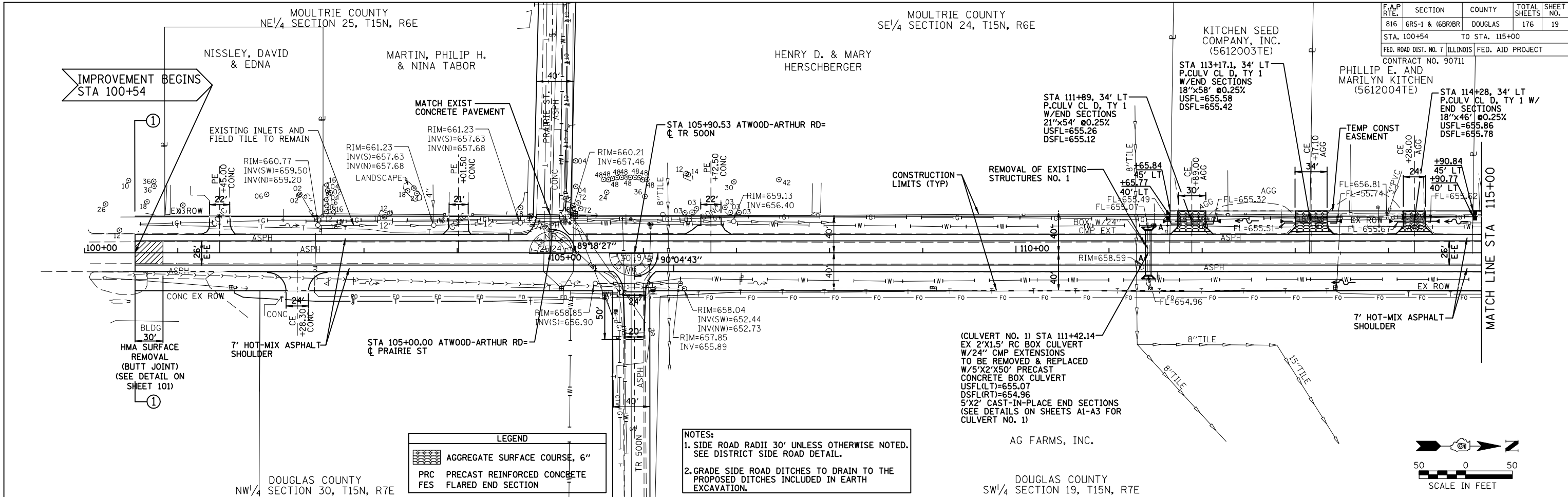


F.A.P. RTE.	SECTION	COUNTY	TOTAL SHEETS	SHEET NO.
816	6RS-1 & 6BRBR	DOUGLAS	176	19
STA. 100+54		TO STA. 115+00		
FED. ROAD DIST. NO. 7		ILLINOIS FED. AID PROJECT		
CONTRACT NO. 90711				

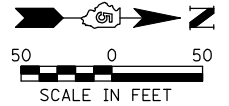


**LEGEND**

	AGG SURFACE COURSE, 6"
	PRC PRECAST REINFORCED CONCRETE
	FES FLARED END SECTION

**NOTES:**

- SIDE ROAD RADII 30' UNLESS OTHERWISE NOTED. SEE DISTRICT SIDE ROAD DETAIL.
- GRADE SIDE ROAD DITCHES TO DRAIN TO THE PROPOSED DITCHES INCLUDED IN EARTH EXCAVATION.



PLAN

SURVEYED	BY	DATE
PLOTTED		
CHECKED		
NO. OF WAY CHECKED		
CADD FILE NAME		

PROFILE

SURVEYED	BY	DATE
PLOTTED		
CHECKED		
NO. NOTED		
STRUCTURE NOTATIONS CHRD		

