

F.A.P. RTE.	SECTION	COUNTY	TOTAL SHEETS	SHEET NO.
816	6R5-1 & 6R18R	DOUGLAS	176	20
STA. 115+00		TO STA. 130+00		
FED. ROAD DIST. NO. 7		ILLINOIS FED. AID PROJECT		
CONTRACT NO. 90711				

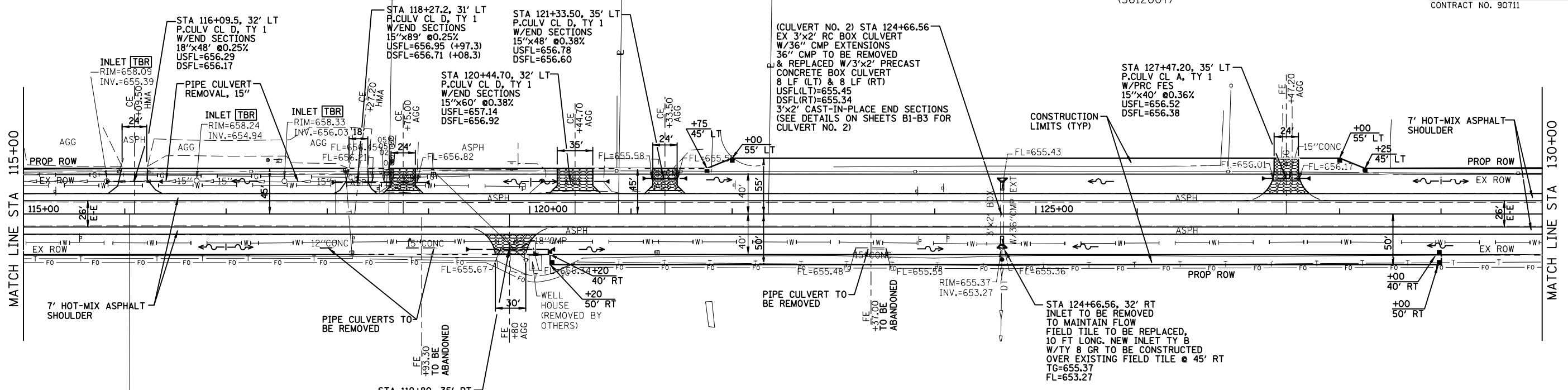
O-S VILLAGE OF TWIN OAKS
(5612005)

PHYLIS A. MARTIN
(5612006)

MOULTRIE COUNTY
SE 1/4 SECTION 24, T15N, R6E

LEVI D. AND SOVILLA S. HERSCHBERGER
(5612007)

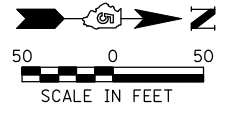
PLAN	SURVEYED	BY	DATE
	PLOTTED		
	CHECKED		
	NO. OF WAY CHECKED		
	CADD FILE NAME		



LEGEND

	AGGREGATE SURFACE COURSE, 6"
	PRC PRECAST REINFORCED CONCRETE
	FES FLARED END SECTION

DOUGLAS COUNTY
SW 1/4 SECTION 19, T15N, R7E



PROFILE	SURVEYED	BY	DATE
	PLOTTED		
	CHECKED		
	NO. OF WAY CHECKED		
	STRUCTURE NOTATIONS CHRD		

