

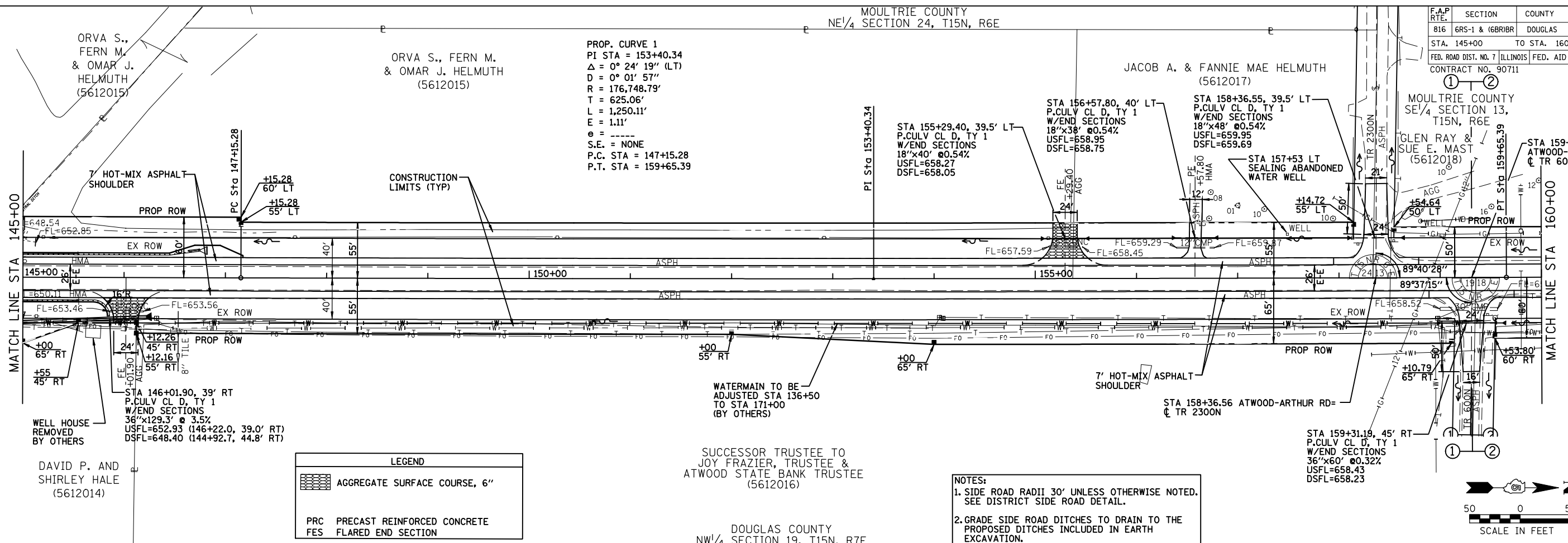
MOULTRIE COUNTY
NE 1/4 SECTION 24, T15N, R6E

F.A.P. RTE.	SECTION	COUNTY	TOTAL SHEETS	SHEET NO.
816	6RS-1 & 16R1BR	DOUGLAS	176	22

STA. 145+00 TO STA. 160+00
FED. ROAD DIST. NO. 7 ILLINOIS FED. AID PROJECT
CONTRACT NO. 90711

PLAN	DATE
SURVEYED	
PLOTTED	
CHECKED	
NO. OF WAY CHECKED	
CADD FILE NAME	

PROFILE	DATE
SURVEYED	
PLOTTED	
CHECKED	
NO. NOTED	
STRUCTURE NOTATIONS CHKD	



PROP. CURVE 1
PI STA = 153+40.34
Δ = 0° 24' 19" (LT)
D = 0° 01' 57"
R = 176,748.79'
T = 625.06'
L = 1,250.11'
E = 1.11'
S.E. = NONE
P.C. STA = 147+15.28
P.T. STA = 159+65.39

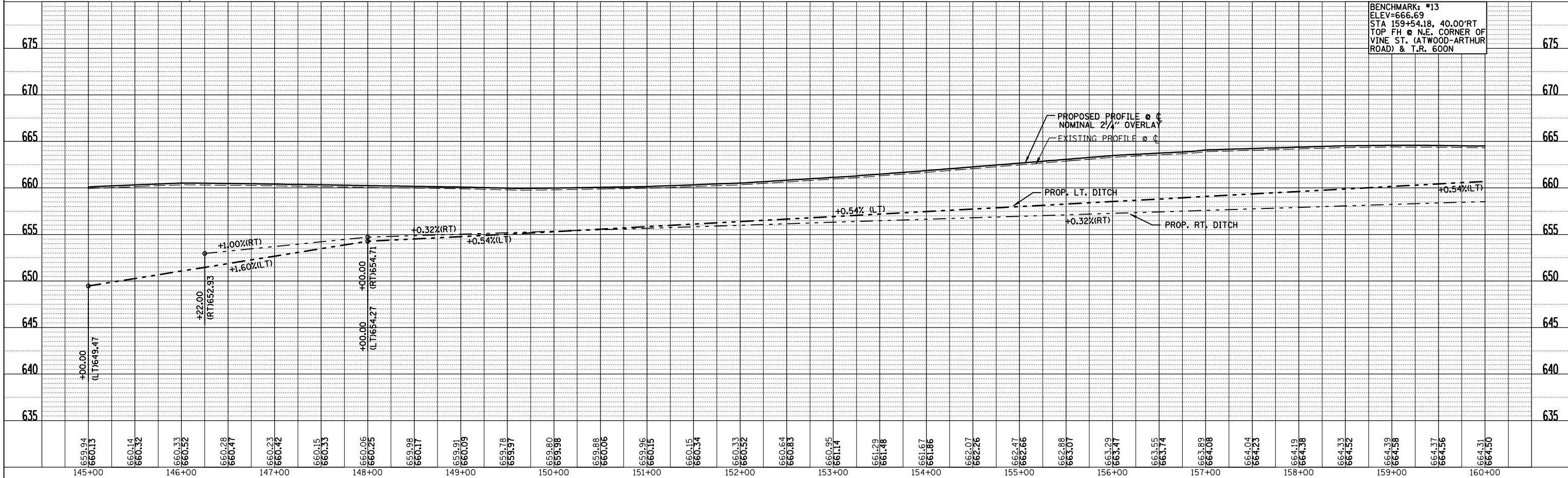
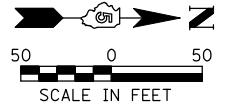
LEGEND

	AGGREGATE SURFACE COURSE, 6"
PRC	PRECAST REINFORCED CONCRETE
FES	FLARED END SECTION

NOTES:
1. SIDE ROAD RADII 30' UNLESS OTHERWISE NOTED. SEE DISTRICT SIDE ROAD DETAIL.
2. GRADE SIDE ROAD DITCHES TO DRAIN TO THE PROPOSED DITCHES INCLUDED IN EARTH EXCAVATION.

SUCCESSOR TRUSTEE TO
JOY FRAZIER, TRUSTEE &
ATWOOD STATE BANK TRUSTEE
(5612016)

DOUGLAS COUNTY
NW 1/4 SECTION 19, T15N, R7E



BENCHMARK: #13
ELEV=666.69
STA 159+54.18, 40.00' RT
TOP FH @ N.E. CORNER OF
VINE ST. (ATWOOD-ARTHUR
ROAD) & T.R. 600N