

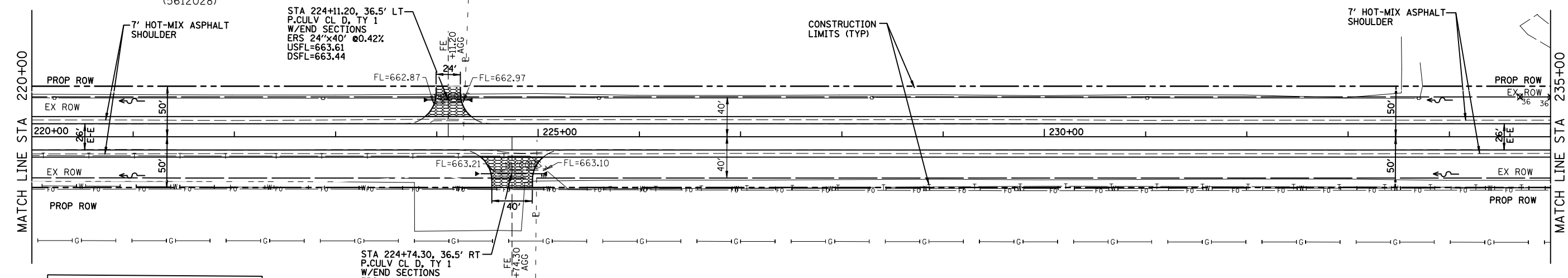
MOULTRIE COUNTY  
SE 1/4 SECTION 12, T15N, R6E

F.A.P. RTE.	SECTION	COUNTY	TOTAL SHEETS	SHEET NO.
816	6RS-1 & (6BR)BR	DOUGLAS	176	27
STA. 220+00		TO STA. 235+00		
FED. ROAD DIST. NO. 7		ILLINOIS		FED. AID PROJECT
CONTRACT NO. 90711				

JILL K. McNULTY &  
JUDITH A. BRIDGES  
(5612028)

ARTHUR COMMUNITY SCHOOL  
DISTRICT, NO. 305  
(5612030)

PLAN	SURVEYED	BY	DATE
	PLOTTED		
	CHECKED		
	NO. OF WAY CHECKED		
	CADD FILE NAME		

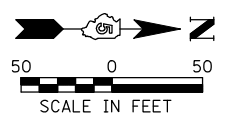


LEGEND	
	AGGREGATE SURFACE COURSE, 6"
	PRC PRECAST REINFORCED CONCRETE
	FES FLARED END SECTION

MARK JONES  
(5612029)

CHERYL S. HILGENBERG,  
JAMES MICHAEL TAPEN,  
& JENNIFER DALE TAPEN  
(5612031)

DOUGLAS COUNTY  
SW 1/4 SECTION 7, T15N, R7E



PROFILE	SURVEYED	BY	DATE
	PLOTTED		
	CHECKED		
	NO. OF WAY CHECKED		
	STRUCTURE NOTATIONS CHRD		

