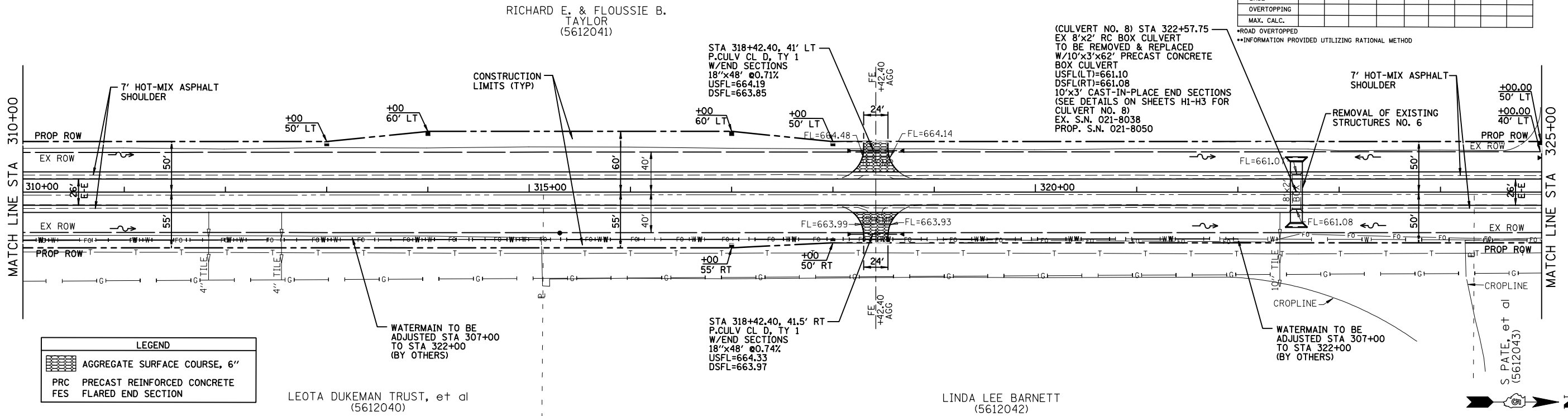


MOULTRIE COUNTY
NE 1/4 SECTION 1, T15N, R6E

WATERWAY INFORMATION										F.A.P. RTE.	SECTION	COUNTY	TOTAL SHEETS	SHEET NO.
DRAINAGE AREA = 212.6 ACRES										664.1	1 & 6(BR)BR	DOUGLAS	176	33
FLOOD	FREQ. YR.	Q C.F.S.	OPENING SQ. FT.	NAT. EXIST.	PROP.	H.W.E. EXIST.	PROP.	WEADN	PROF.	STA.	STA.	FED. AID PROJECT		
DESIGN	50	121.0	16	30	663.4	664.1	664.1	664.1	664.1	310+00	325+00			
BASE														
OVERTOPPING														
MAX. CALC.														

PLAN	SURVEYED	BY	DATE
	PLOTTED		
	CHECKED		
	NO. OF WAY CHECKED		
	NO.		



PROFILE	SURVEYED	BY	DATE
	PLOTTED		
	CHECKED		
	NO. NOTED		
	STRUCTURE		
	NOTATIONS		
	CHRD		

