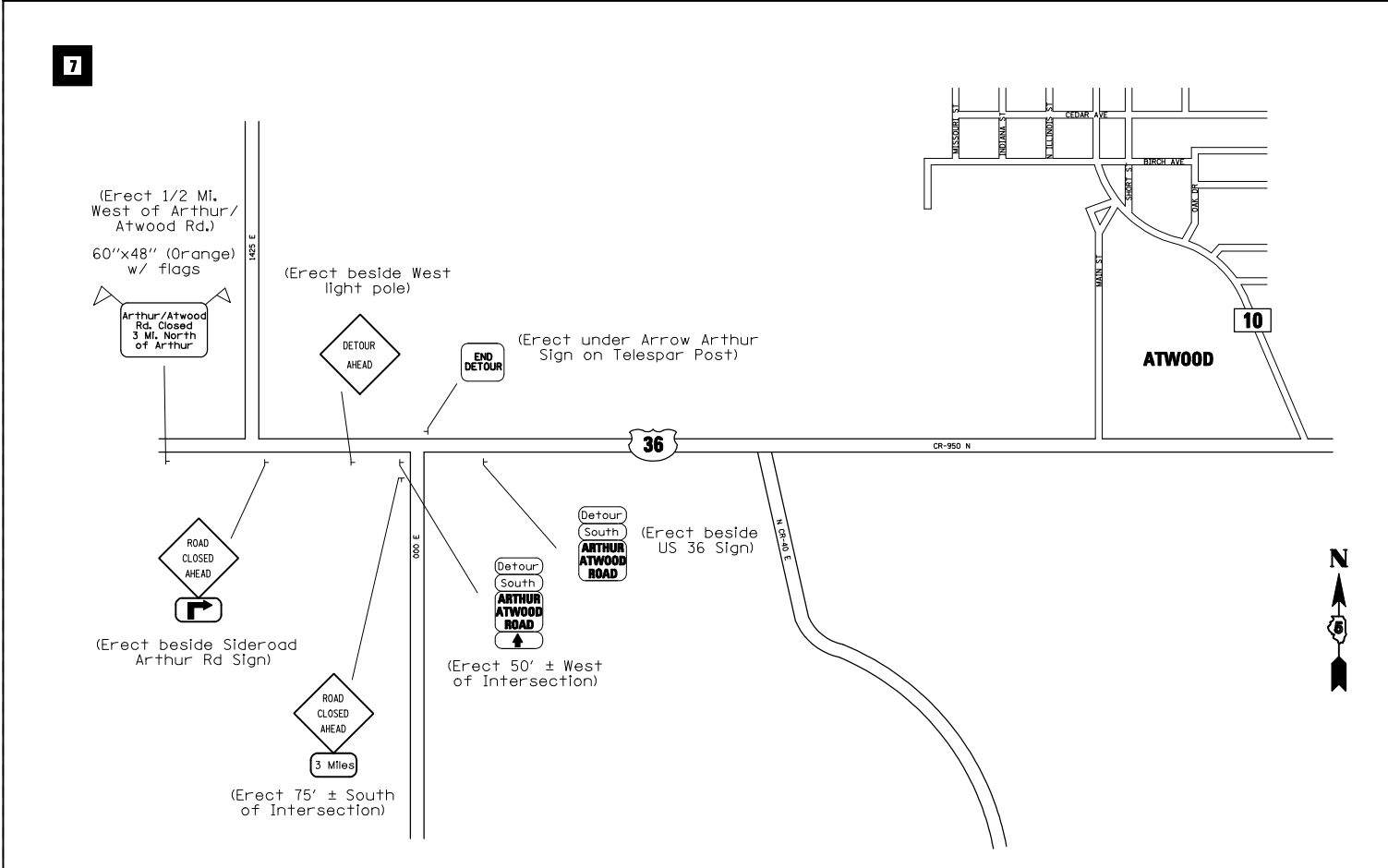
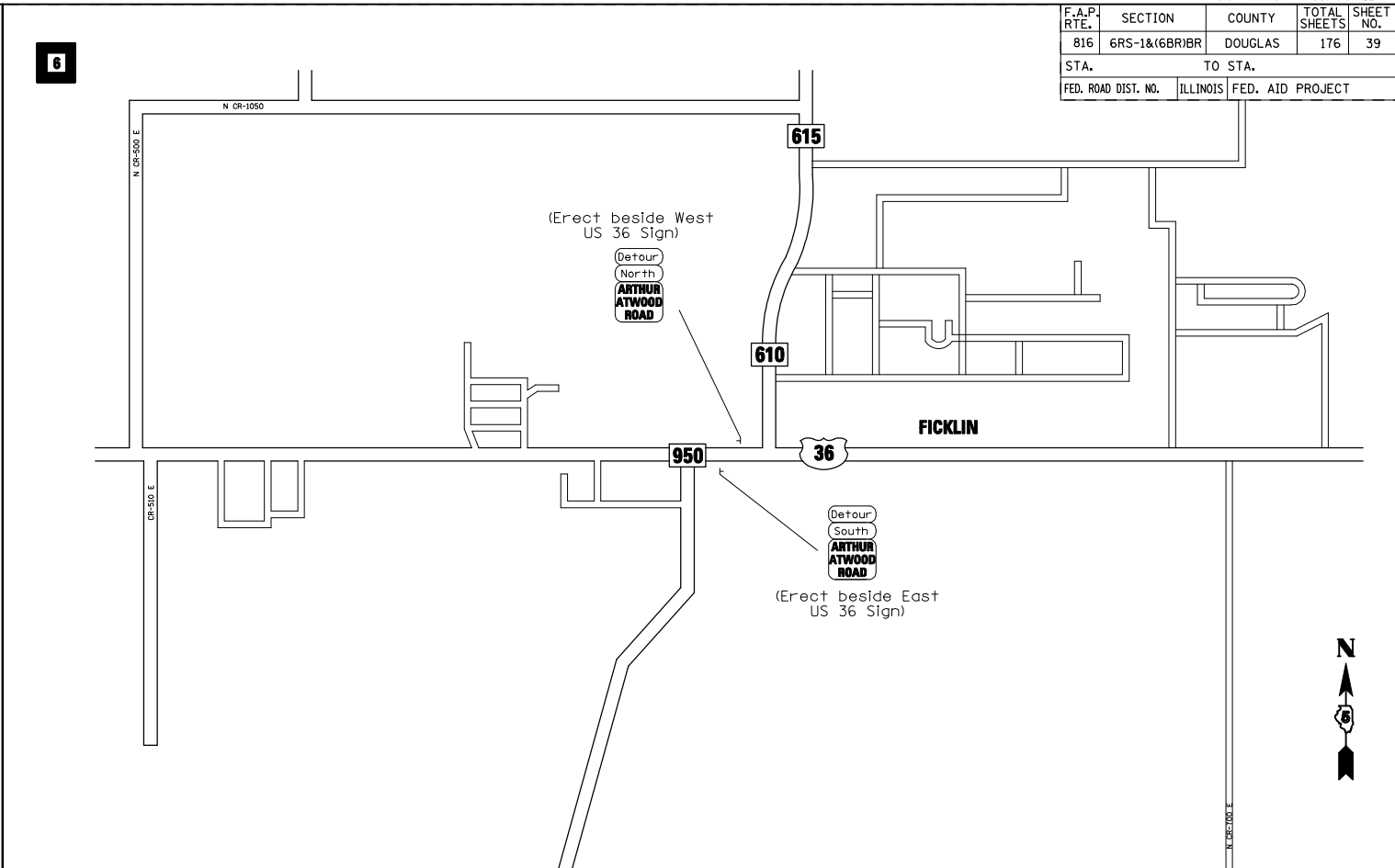
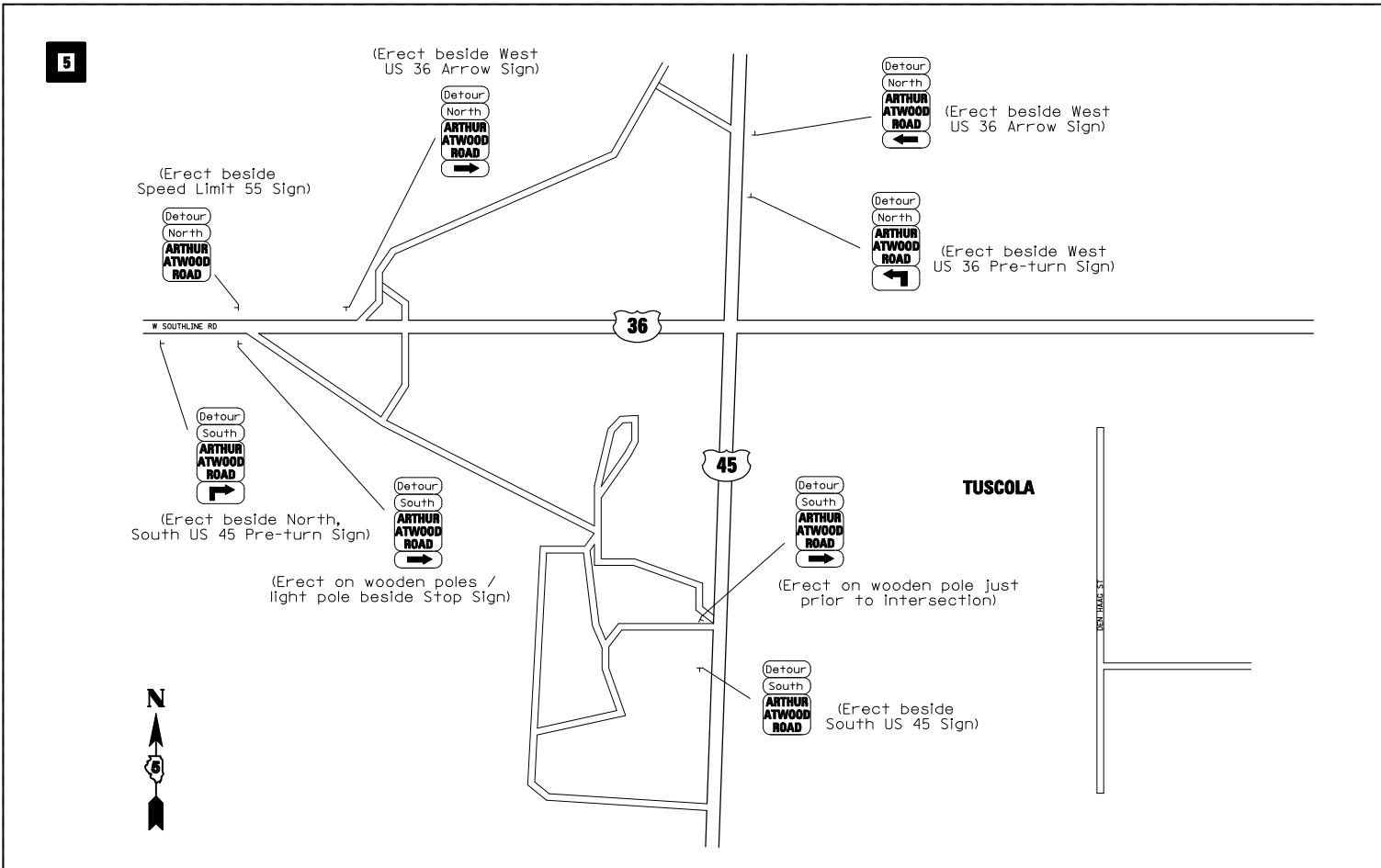
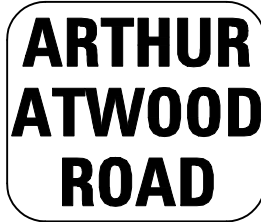


F.A.P. RTE.	SECTION	COUNTY	TOTAL SHEETS	SHEET NO.
816	6RS-1&16BR1BR	DOUGLAS	176	39
STA.		TO STA.		
FED. ROAD DIST. NO.	ILLINOIS	FED. AID PROJECT		



TYPICAL DETOUR ROUTE MARKER SHIELD



24" X 24" WHITE SIGN (MIN.) WITH 3" X 3" BLACK LETTERING (MIN.)

REVISIONS	
NAME	DATE

ILLINOIS DEPARTMENT OF TRANSPORTATION
DETOUR SIGNING SHEET
 SCALE: VERT. / HORIZ.
 DATE: / /
 DRAWN BY: / /
 CHECKED BY: / /

PLOT DATE = 8/22/2008
 FILE NAME = c:\p\projects\4506695\2007_08_13\submit\detour.dgn
 PLOT SCALE = 1/8"=1'-0"
 USER NAME = kejar-b